

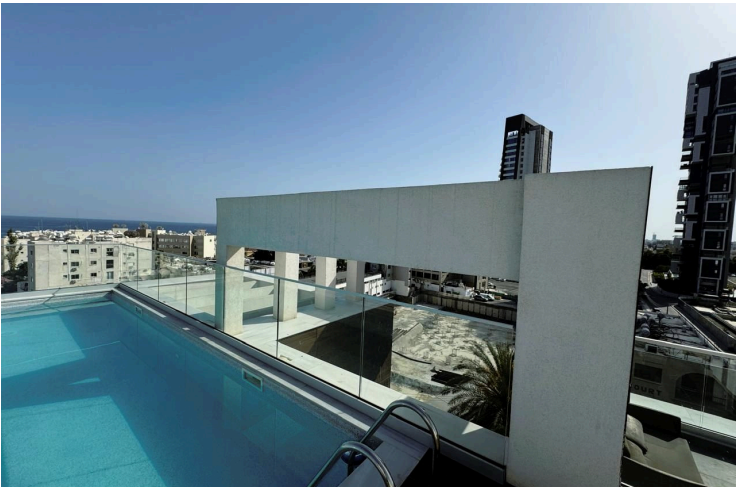
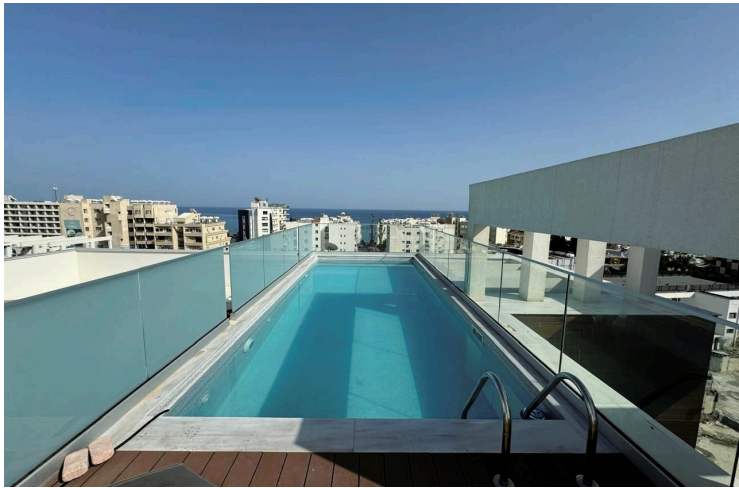
64178578

MODERN THREE BEDROOM PENTHOUSE WITH ROOF GARDEN AND SWIMMING POOL

 Potamos Germasogeias, Limassol

€5,000 /month





Overview

Specifications

Bedrooms



3

Bathrooms



1

Covered

138 m²

Type	Apartment
Showers	1
Toilets	3
Status	Key ready

Year of construction	2021
Furnished	Fully furnished
Energy efficiency rating	A

Description

This modern newish three bedroom penthouse is situated in a residential building of Potamos Germasogias Limassol with only luxury two and three bedroom apartments.

The apartment consists of three bedrooms one of which is the master with en suite shower, guest w/c and a family bathroom. Spacious bright living room with floor to ceiling windows that lead to the large veranda and open plan kitchen with dining area and island bar. Roof garden of 80 sq m. with private swimming pool and BBQ area.

- High quality kitchen cabinetry and wardrobes with elegant design
- Plaster ceiling with hidden lighting in living room and kitchen areas
- A/C in all rooms /VRV system.
- Double-glazed windows and aluminum frames with high thermal insulation values
- Luxury European flooring and sanitary ware of high standards
- Laminate parquet of high quality in bedrooms
- Security entrance door with video phone system
- Electric gates
- Pressurized system for hot and cold water
- Pipe in pipe plumbing system
- Solar heating panels.

Amazing option for luxury living!

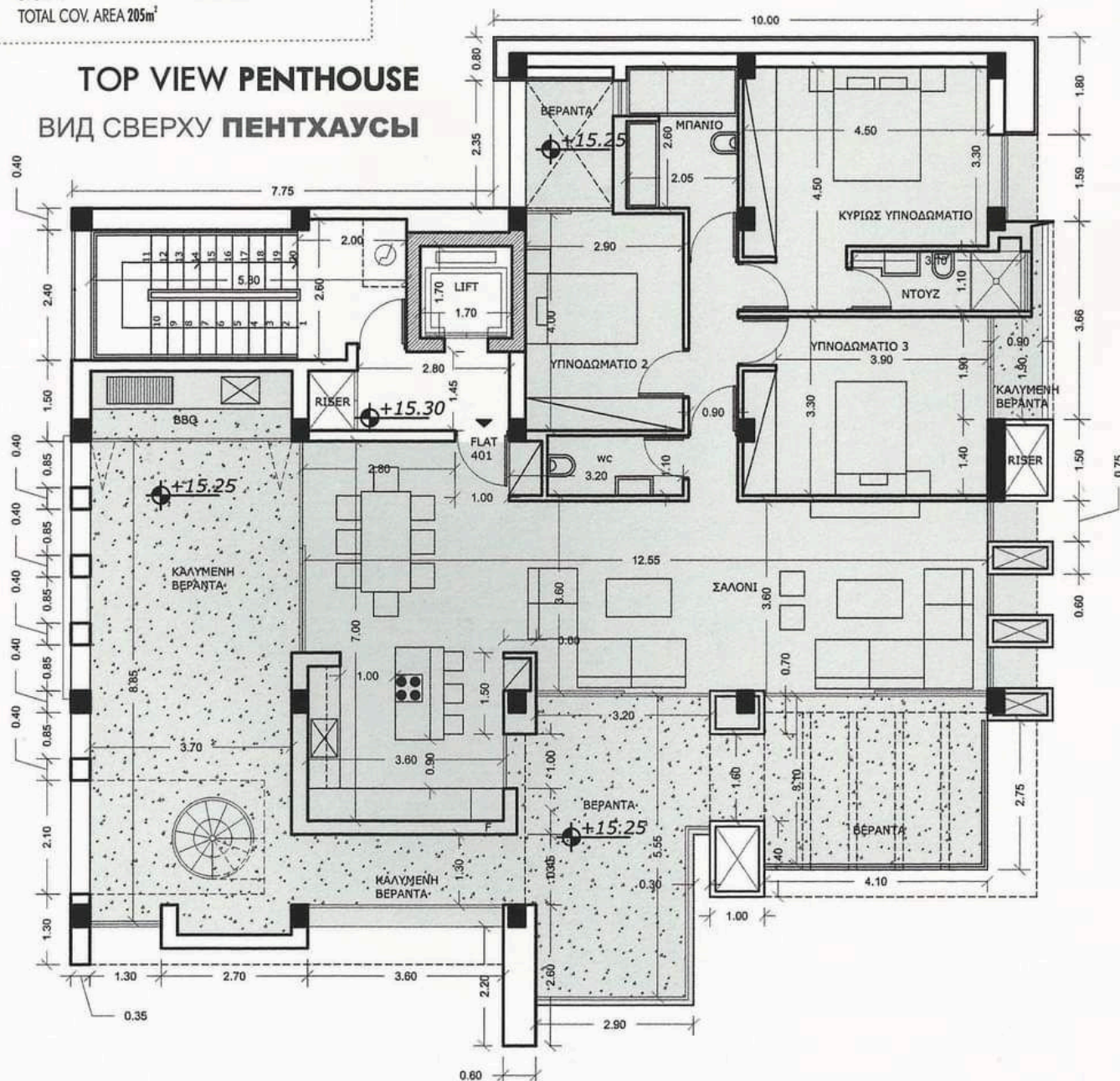


Floor plans

PENTHOUSE / ΠΕΝΤΧΑΥΣΥ

INTERNAL COV. AREA 132m² UNCOV. VERANDA 47m²
 COV. VERANDA 39m² SWIMMING POOL 24m²
 COMMON AREAS 22m² ROOF GARDEN 64
 STORAGE 12m² COV. PARKING 1
 TOTAL COV. AREA 205m²

TOP VIEW PENTHOUSE ВИД СВЕРХУ ПЕНТХАУСЫ



Additional information

Facilities

Aircondition, Central system

Heating, Underfloor

Solar photovoltaic panels

Elevator

Parking, Garage

Solar water heater

Gym

Pool, Private

Storage

Features

Balcony

Bright

Cul de sac

Easy access to main roads

Fitted wardrobes

Internet

Luxury specifications

Near amenities

Pressurized water system

Sea view

Sound insulation

Veranda

Bath

Combined kitchen and dining area

Door screen

En suite shower

Fly screens

Kitchen appliances

Modern design

Near bus route

Roller blinds

Shower

Spacious rooms

Veranda, large

Bicycle parking

Connected to electric mains

Double glazing

Entrance gate, automated

Guest WC

Laundry room

Municipal water/sewage

Open plan

Roof garden

Shutters, electric


Thermal insulation

Walking distance to beach

Contact us



Tatiana Kirshanova

 (+357) 96071790

 tatianak@vivorealty.com.cy

