

64178503

# UNDER CONSTRUCTION LUXURY TWO BEDROOM APARTMENT IN PANTHEA

 Panthea, Limassol

**€295,000** +VAT ~~€320,000~~





# Overview

## Specifications

Bedrooms



2

Bathrooms



1

Covered

75 m<sup>2</sup>

Type	<b>Apartment</b>
Showers	<b>1</b>
Toilets	<b>2</b>
Covered veranda	<b>18 m<sup>2</sup></b>

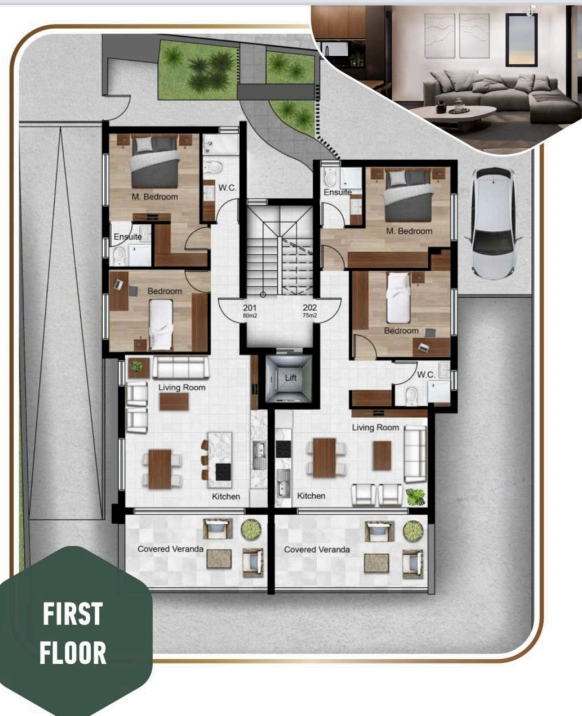
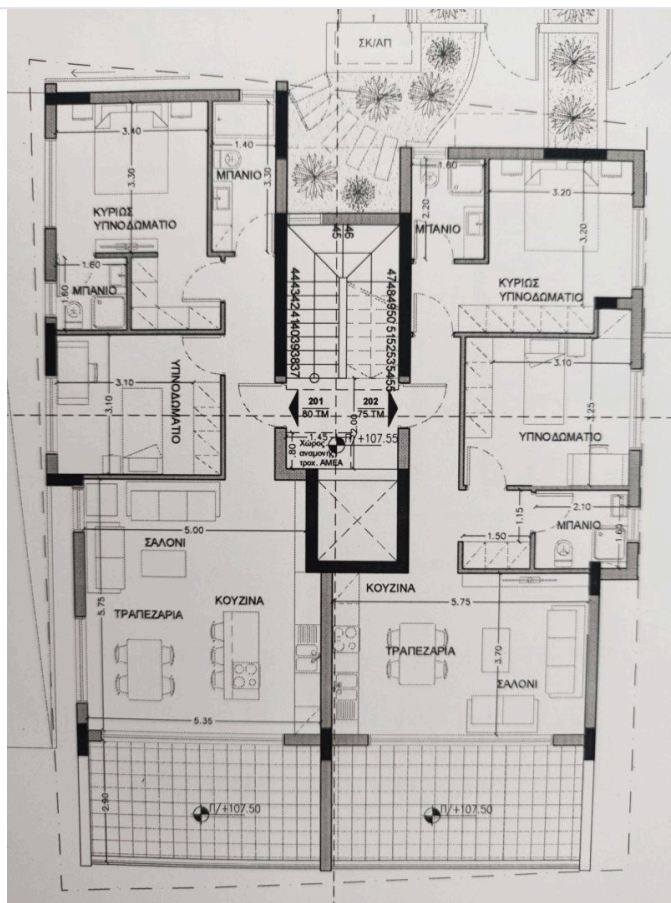
Status	<b>Under construction</b>
Year of construction	<b>2023</b>
Furnished	<b>Unfurnished</b>
Energy efficiency rating	<b>A</b>

## Description

This new luxury 2 bedroom apartment is located in the area of Panthea, Limassol, just above the round about of Mesa Geitonia in a new Luxurious modern residential building which consists of 5 apartments in total and is a perfect opportunity for residence or investment. Easy access to all amenities and all major roads.

The apartment has an open plan kitchen with island bar, living room with dining area that leads to the veranda, two bedrooms and a bathroom. The master bedroom comes with en-suite shower. Provision for a/c & c/h, covered parking and storage space available.

# Floor plans



Apartment 201: 80m<sup>2</sup>, 2 bedrooms, 1 en-suite bathroom, 1 guest bathroom, open plan living room and kitchen, covered veranda and private parking space.

Apartment 202: 80m<sup>2</sup>, 2 bedrooms, 1 en-suite bathroom, 1 guest bathroom, open plan living room and kitchen, covered veranda and private parking space.

# Additional information

## Facilities

Aircondition, Provision

Elevator

Heating, Provision

Parking, Covered

Solar photovoltaic panels  
(provision)

Solar water heater

Storage

## Features

Alarm system (provision)

Balcony

Bath

Bright

City view

Combined kitchen and dining area

Connected to electric mains

Door screen

Double glazing

Easy access to highway

Easy access to main roads

En suite shower

Entrance gate, automated

Fitted wardrobes

Fly screens

Investment opportunity

Luxury specifications

Modern design

Municipal water/sewage

Near amenities

Open plan

Pressurized water system

Rental potential

Shower

Shutters, electric


Sound insulation

Thermal insulation

## Contact us



**Tatiana Kirshanova**

 (+357) 96071790

 [tatianak@vivorealty.com.cy](mailto:tatianak@vivorealty.com.cy)