

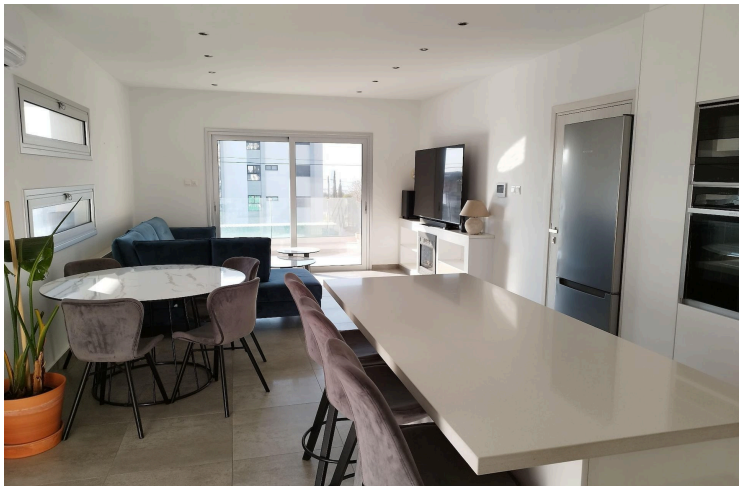
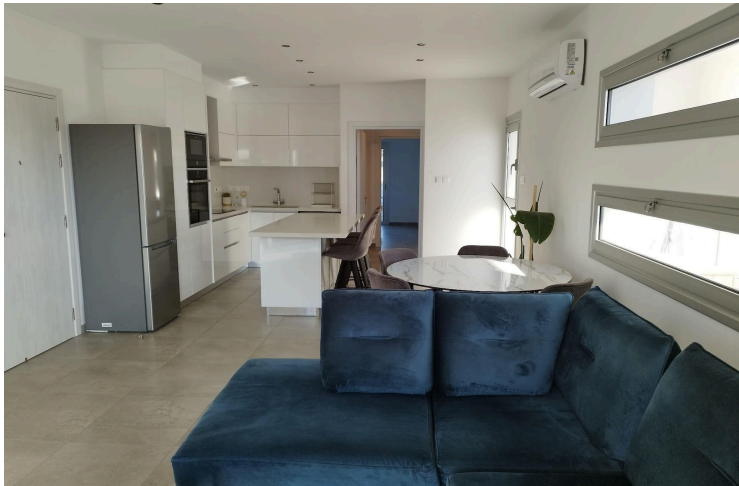
64178431

MODERN TWO BEDROOM APARTMENT CLOSE TO GRAMMAR SCHOOL

 Agia Fyla, Limassol

€1,650 /month ~~€1,700~~





Overview

Specifications

Bedrooms



2

Covered

85 m²

Type	Apartment
Showers	2
Toilets	2
Status	Key ready

Year of construction	2021
Furnished	Partially furnished
Communal charge	€65
Energy efficiency rating	A

Description

This two bedroom apartment is located between Ag.Fyla and Panthea and is very close to the Grammar school and Mediterranean Hospital.

Situated on the first floor in three years old residential building the apartment offers an open plan fully equipped kitchen combined with the sitting and dining area, large covered veranda, family bathroom and the two bedrooms of which one the master with ensuite shower.

The apartment includes A/C split system in all the rooms, electric heater units, installed photovoltaic panels (2kv) and covered parking.



Additional information

Facilities

Aircondition, Split system

Elevator

Heating, Central, electric

Parking, Covered

Solar photovoltaic panels

Features

Balcony, back

Balcony, front

Bright

Combined kitchen and dining area

Connected to electric mains

Double glazing

Easy access to highway

Easy access to main roads

En suite shower

Entrance gate, automated

Fitted wardrobes

Fly screens

Heart of city center

Internet

Kitchen appliances

Modern design

Municipal water/sewage

Near amenities

Near bus route

Open plan

Pressurized water system

Shower

Shutters, electric


Sound insulation

Thermal insulation

Contact us



Tatiana Kirshanova

 (+357) 96071790

 tatianak@vivorealty.com.cy

