



**VIVO**  
REALTY



## FULLY FURNISHED 4 BEDROOM DETACHED HOUSE IN PATHEA

 [Limassol, Panthea](#)

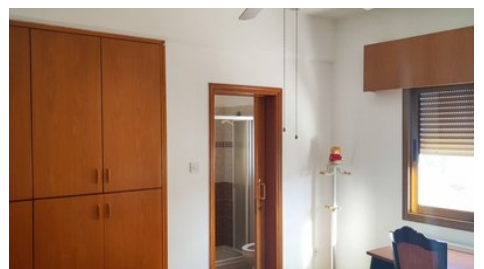
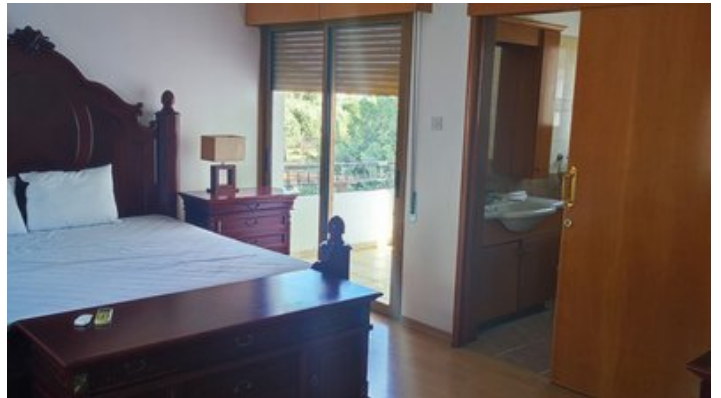
64178140





VIVO  
REALTY

[vivorealty.com.cy](http://vivorealty.com.cy)



<b>Rent</b>	€2,600 /month	<b>Type</b>	Detached Villa
<b>Bedrooms</b>	4	<b>Bathrooms</b>	1
<b>Covered</b>	270 m <sup>2</sup>	<b>Status</b>	Key ready
<b>Energy efficiency rating</b>	B	<b>Area</b>	Limassol, Panthea

## Description

This spacious detached house of 270sq m covered areas is located close to the Grammar school and just a 1-2 minute drive to the Mesa Geitonia round about. The property consists of 4 bedrooms 2 of which are with en-suite and the family bathroom on the first floor. On the ground floor there is a huge living room, dining area, fully equipped kitchen, extra small kitchenette and guest W/C.

A/C in all areas , central heating and parking for 2-3 vehicles is available.

Small garden at the back and the side of the property

Part of the furniture can be removed if requested.



### Tatiana Kirshanova

Property Consultant

✉ tatianak@vivorealty.com.cy

☎ (+357) 96071790

## Facilities

Aircondition, Split system

Parking, Uncovered

Solar water heater

Heating, Central

Storage

Self contained annex

---

## Features

Bath

Separate dining area

Easy access to main roads

Combined kitchen and dining area

Connected to electric mains

Openings in opposite sides

Fitted wardrobes

Entrance gate

Shutters

Internal stairs

Kitchenette

Guest WC

En suite Shower

Near amenities

Laundry room

Shower

Thermal insulation

Easy access to highway

Spacious rooms

Municipal water/sewage

Balcony

Utility room

Ceiling fans

Garden

Bright

Double glazing

Veranda

Near bus route

Internet

Kitchen appliances