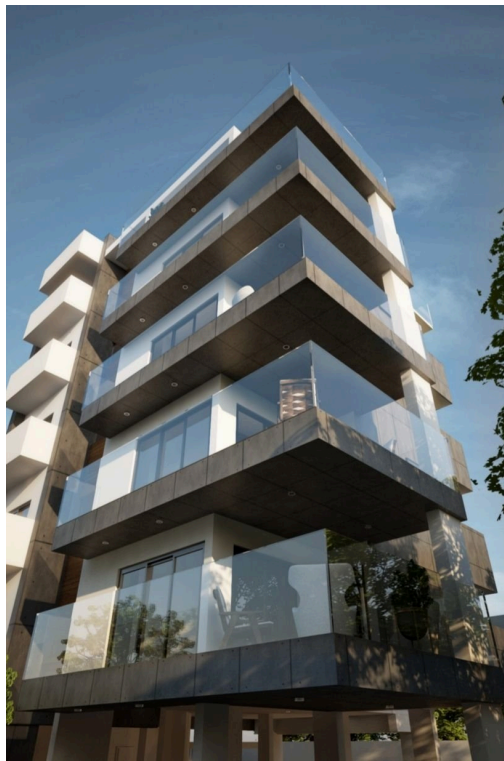




**VIVO**  
REALTY



## RESIDENTIAL BUILDING IN POTAMOS GERMASOGEIAS

 [Limassol, Potamos Germasogeias](#)

**64177795**



<b>Price</b>	€2,350,000 €2,650,000	<b>Type</b>	Apartment Building
<b>Covered</b>	618 m <sup>2</sup>	<b>Basement</b>	200 m <sup>2</sup>
<b>Covered veranda</b>	143 m <sup>2</sup>	<b>Uncovered veranda</b>	52 m <sup>2</sup>
<b>Plot</b>	522 m <sup>2</sup>	<b>Status</b>	Under construction
<b>Energy efficiency rating</b>	A	<b>Area</b>	Limassol, Potamos Germasogeias

## Description

Under renovation residential building just a minutes walk from the seafront in Potamos Germasogeias, Limassol. Corner plot, opposite a park/green area with all amenities within walking distance, 100m from the beach and very close to the large green area of Dasoudi Park. The building consists of five whole floor apartments (four 3 bedroom flats & the two bedroom penthouse). Each of the three bedroom apts are 134m<sup>2</sup> + 27,5m<sup>2</sup> covered verandas and the two bedroom penthouse (which can be converted into 3 bdrs) is 82m<sup>2</sup> + 33,5m<sup>2</sup> covered verandas + 51,7m<sup>2</sup> uncovered verandas. Some of the features are VRV system, underfloor heating , home automation, gated complex etc.



### Tatiana Kirshanova

Property Consultant

✉ tatianak@vivorealty.com.cy

☎ (+357) 96071790

## Facilities

Aircondition, Central system

Parking, Underground

Solar water heater

Heating, Underfloor

Elevator

---

## Features

Bicycle parking

Easy access to highway

Municipal water/sewage

Corner

Double glazing

Luxury specifications

Easy access to main roads

Connected to electric mains

Entrance gate, automated

Ceramic tiles

Near public transport

Internet

## Floor plans

