

64176274

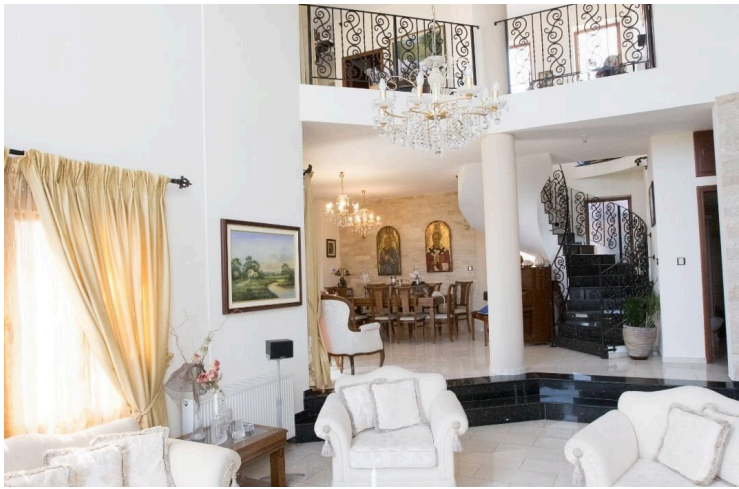
# BEAUTIFUL SEVEN BEDROOM VILLA WITH MAGNIFICENT PANORAMIC SEA VIEW IN PANTHEA

 Panthea, Limassol

€10,000 /month









# Overview

## Specifications

Bedrooms



7

Bathrooms



5

Covered

450 m<sup>2</sup>

Type

**Detached Villa**

Toilets

**5**

Plot

**890 m<sup>2</sup>**

Status

**Key ready**

Furnished

**Unfurnished**

## Description

A beautiful house in a unique location on the hills of Panthea overlooking the city of Limassol complementing panoramic Limassol sea views , garden and swimming pool, enjoy uninterrupted views of the blue Mediterranean from east to west with beautiful sunrises and sunsets. The external covered verandas of the ground, lower ground and first floor transfer the magnificent views from the outside to the inside spaces of the residence, and all the exterior as well as the interior

areas form relaxing spaces for the occupiers of the house.

The terrace includes a good size overflow swimming pool with the same unique views.

The ground floor includes open plan living and dining room, part of which is open to the top floor circulation balcony that serves the upstairs bedrooms. The kitchen is fully equipped and has an extra kitchenette.

Throughout the property, there are 6 standard sized bedrooms, 3 bathrooms and 1 guest WC with shower. There is also one studio with a bathroom outside

Three bedrooms are located on the 1st floor, all with en-suite along with a spacious laundry/utility room, one bedroom on the ground floor which can be used as an office or guest room and the other two bedrooms are on the top floor of which one with en-suite. Central heating and air-conditioning installed throughout the house.

Double glazed windows with mosquito nets throughout.

The house has installed photovoltaic panels (6kw) for energy saving.



# Additional information

## Facilities

Aircondition, Split system

Landscaped garden

Pool, Private

Storage

Childrens playground

Outdoor shower

Solar photovoltaic panels

Heating, Central

Parking, Covered

Solar water heater

## Features

24-hour security

Balcony

City view

Double glazing

Entrance gate

Ground floor bedroom

Guestroom

Internal stairs

Laundry room

Municipal water/sewage

Openings in opposite sides

Play room

Sea view

Utility room

Walk-in closet

Alarm system

Barbeque

Combined kitchen and dining area

Easy access to highway

Garden

Guest WC

High ceilings

Internet

Linen room

Next to green area

Outdoor kitchen

Quiet area

Spiral staircase

Veranda

Attic

Bright

Connected to electric mains

En suite bathroom

Garden, large

Guest cloakroom

Indoor fireplace

Kitchen appliances

Mountain view

Open plan

Panoramic view

Roller blinds


Under stairs storage

Veranda, large

## Contact us



**Tatiana Kirshanova**

 (+357) 96071790

 [tatianak@vivorealty.com.cy](mailto:tatianak@vivorealty.com.cy)

