

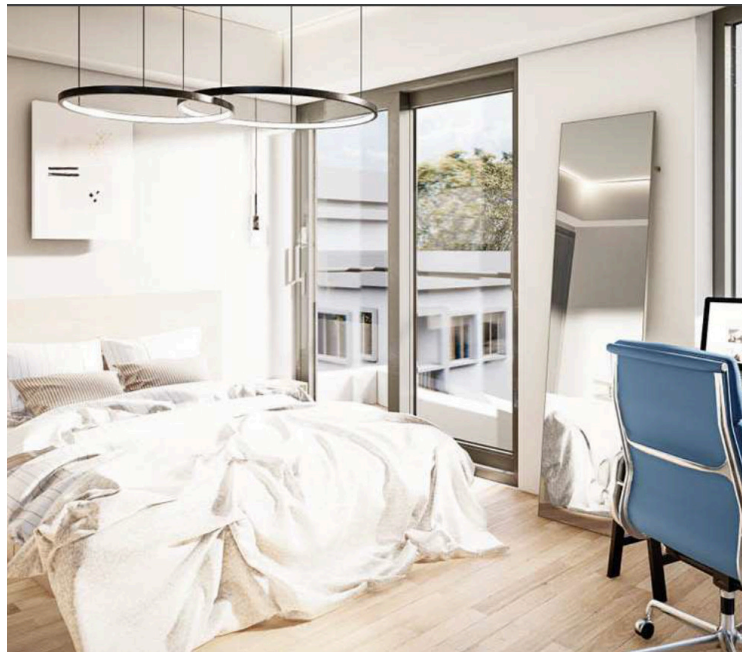
60185771

THREE BEDROOM PENTHOUSE UNDER CONSTRUCTION FOR SALE IN KATHOLIKI

 Katholiki, Limassol

€995,000 +VAT





Overview

Specifications

Bedrooms

 3


Bathrooms

 2

Covered

 120 m²

Type	Apartment
Toilets	3
Covered veranda	17 m²
Uncovered veranda	36 m²

Roof garden	57 m²
Status	Under construction
Furnished	Unfurnished
Energy efficiency rating	 A+

Description

Three Bedroom penthouse for sale -

Open plan area with kitchen - 3 bedrooms (including an en-suite and private veranda)

one main bathroom and one guest toilet

Spacious veranda + a roof garden

This contemporary residential building is located in the heart of one of Limassol's most vibrant and prestigious areas — Katholoki The development consists of seven exclusive apartments, offering a selection of 1, 2, and 3-bedroom residences, where modern aesthetics are seamlessly combined with functionality and comfort.

Each apartment is finished with high-quality materials and refined design details. Bedrooms feature wooden laminate flooring and Italian-designed wardrobes made of premium melamine. The Italian kitchen is fully equipped with a soft-closing system for doors and drawers, and finished with either Italian tiles or laminated wooden flooring.

The complex has been designed with sustainability and efficiency in mind. Photovoltaic panels are installed in every apartment and in all common areas, contributing to reduced energy consumption and operational costs.

Key Features & Specifications

Energy Efficiency Class: A+

Nearly Zero Energy Building (NZEB)



Floor plans



4th FLOOR

<u>Flat no</u>	<u>Bedroom</u>	<u>Flat Area</u>	<u>Covered Verandas</u>	<u>Uncovered Verandas</u>	<u>Private Garden</u>	<u>Roof Garden</u>	<u>Common Areas</u>	<u>Storage Room</u>	<u>Total Area</u>	<u>Parking Space</u>
401	3	121	17	36.5	28	57	27	2.5	289	2



Additional information

Facilities

Aircondition, Central system

Parking, Covered

Storage

Elevator

Solar photovoltaic panels

Heating, Provision

Solar water heater

Features

Alarm system

CCTV

Double glazing

Energy efficient doors/windows

Guest WC

Near amenities

Painted

Pressurized water system

Roof garden

Spacious rooms

Balcony

Combined kitchen and dining area

Easy access to main roads

Entrance gate, automated

Luxury specifications

Near bus route

Parquet flooring

Quiet area

Semi-solid parquet flooring

Thermal insulation

Bright

Connected to electric mains

Electric car charger (provision)

Fitted wardrobes

Modern design

Open plan

Pipe-in-pipe plumbing system


Rental potential

Shower

Contact us



Natalia Pot

 (+357) 96071780

 npot@vivorealty.com.cy

