

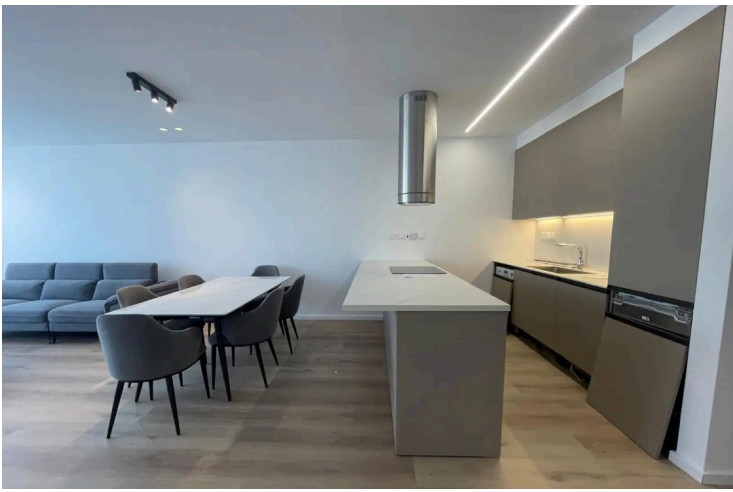
60185636

BRAND NEW FULLY FURNISHED 2 - BEDROOM APARTMENT WITH COMMUNAL POOL AND GYM FOR RENT

 Panthea, Limassol

€2,500 /month





Overview

Specifications

Bedrooms

 2

Bathrooms

 2

Covered

 88 m²


Type **Apartment**

Toilets **2**

Status **Key ready**

Year of construction **2026**

Furnished **Fully furnished**

Energy efficiency rating  **A**

Description

Available now for rent, this brand-new, fully furnished apartment offers comfortable living in a modern and prestigious setting. With 88 m² of internal covered space, this key-ready residence combines style, convenience, and high-quality amenities.

The apartment features a bright open-plan living and Kitchen area filled with natural light leading onto a spacious veranda, ideal for relaxing or entertaining.

There are two bedrooms, including a master bedroom with an en-suite bathroom featuring a shower, double sinks, and a walk-in wardrobe. Plus a main bathroom with shower

Features

Brand-new and fully furnished

Walk-in wardrobe

Electric shutters

Mosquito nets

2 covered parking spaces

Large private storage room

Building Amenities

Communal swimming pool

Fully equipped communal gym with locker rooms

Lobby area

24 hour monitor security



Additional information

Facilities

Aircondition, Split system

Solar water heater

Parking, Covered

Storage

Pool, Communal

Features

Balcony

Double glazing

En suite shower

Fly screens

Open plan

Shutters, electric

Combined kitchen and dining area

Easy access to highway

Energy efficient doors/windows

Modern design

Pressurized water system

Smart home automation

Connected to electric mains

Easy access to main roads

Fitted wardrobes

Near amenities


Quiet area

Sound insulation

Contact us



Natalia Pot

 (+357) 96071780

 npot@vivorealty.com.cy

