

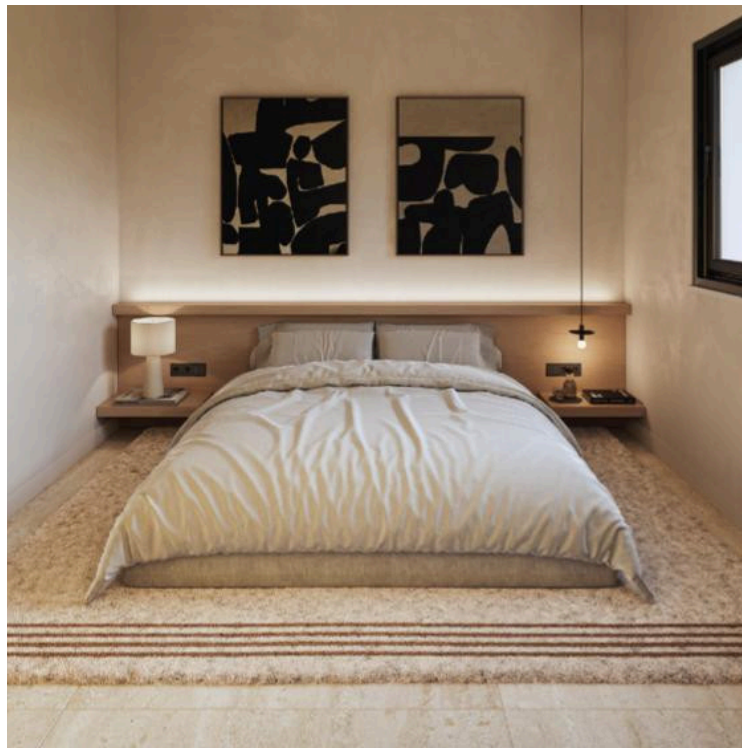
60184916

TWO BEDROOM APARTMENT FOR SALE IN EKALI

 Ekali, Limassol

€385,000 +VAT





Overview

Specifications

Bedrooms

 2


Bathrooms

 2

Covered

 75 m²

Type	Apartment
Toilets	2
Covered veranda	20 m²

Status	Key ready
Furnished	Unfurnished
Energy efficiency rating	 A

Description

For sale is a key ready 2 bedroom apartment offering 75 m² of bright, modern living space in the desirable area of Ekali. This thoughtfully designed home features two spacious bedrooms / including one en-suite bedroom one main bathroom and open plan living space with kitchen and access to the veranda , making it ideal for couples or small families.

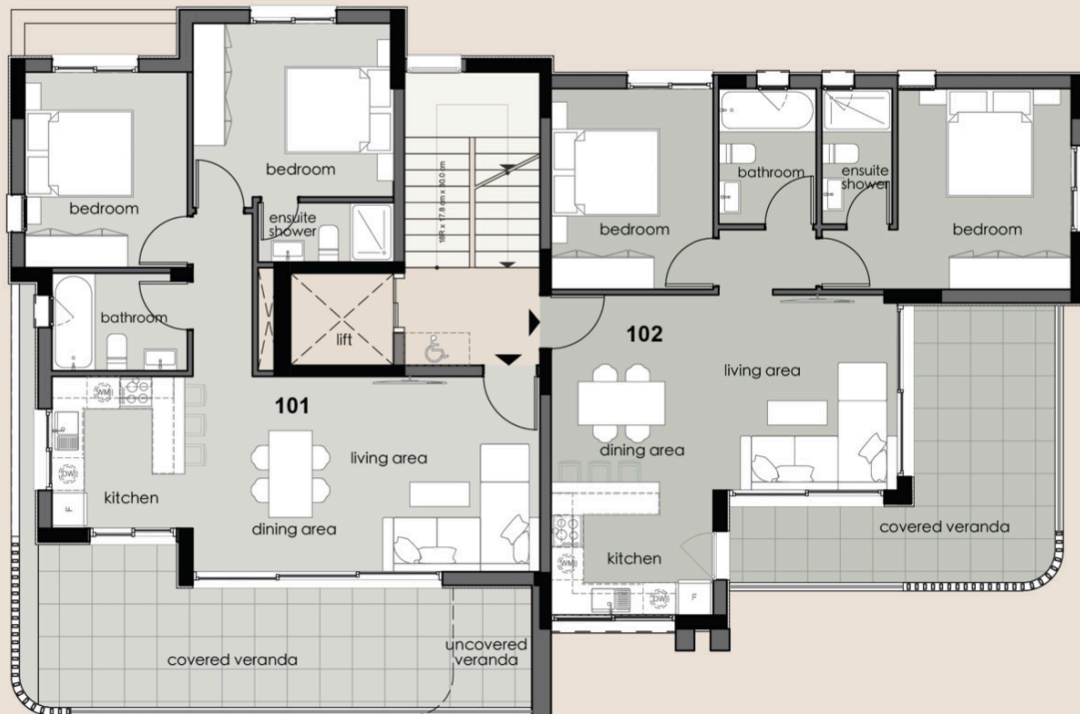
The apartment includes high-quality finishes throughout , Photovoltaic system for low cost and the comfort of underfloor heating, which is both efficient and pleasant during the cooler months.

Ekali is a peaceful and sought-after residential neighborhood, known for its green surroundings and quiet streets. It offers a relaxed environment while still being conveniently close to essential amenities such as supermarkets, cafes, schools, and public transport. The area is perfect for those who want a calm place to live without feeling disconnected from city life.

This excellent property is advertised exclusively by Vivo Realty. Contact us today to arrange a viewing or to learn more about this outstanding opportunity.



Floor plans



FLOOR 1



Additional information

Facilities

Aircondition, Split system

Solar water heater

Heating, Underfloor

Storage

Solar photovoltaic panels

Features

Alarm system

Combined kitchen and dining area

Easy access to highway

Energy efficient doors/windows

Near amenities

Quiet area

Balcony

Connected to electric mains

Easy access to main roads

Entrance gate, automated

Open plan

Smart home automation

Bright

Double glazing

En suite shower

Modern design


Pressurized water system

Thermal insulation

Contact us



Natalia Pot

 (+357) 96071780

 npot@vivorealty.com.cy

