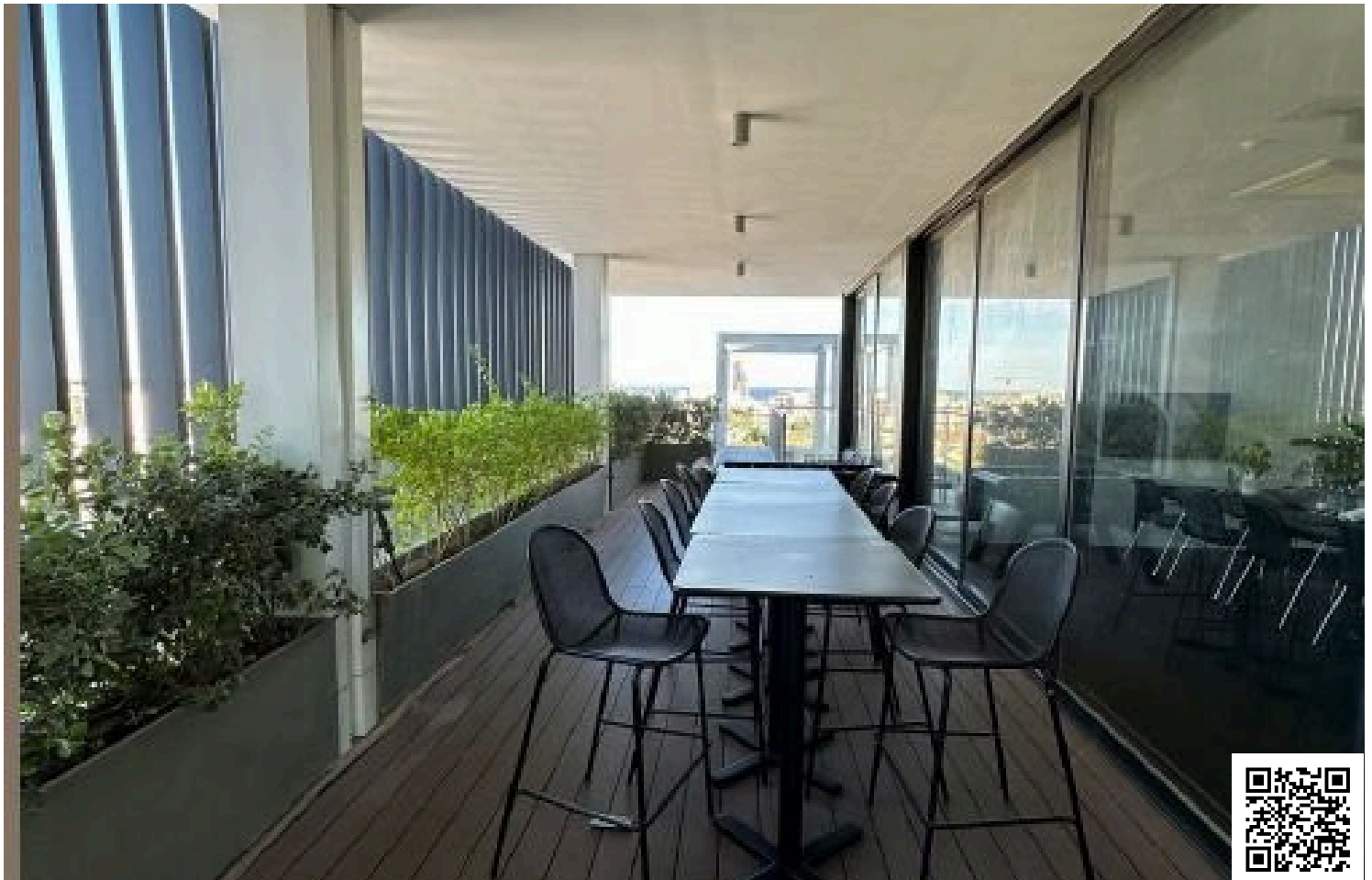


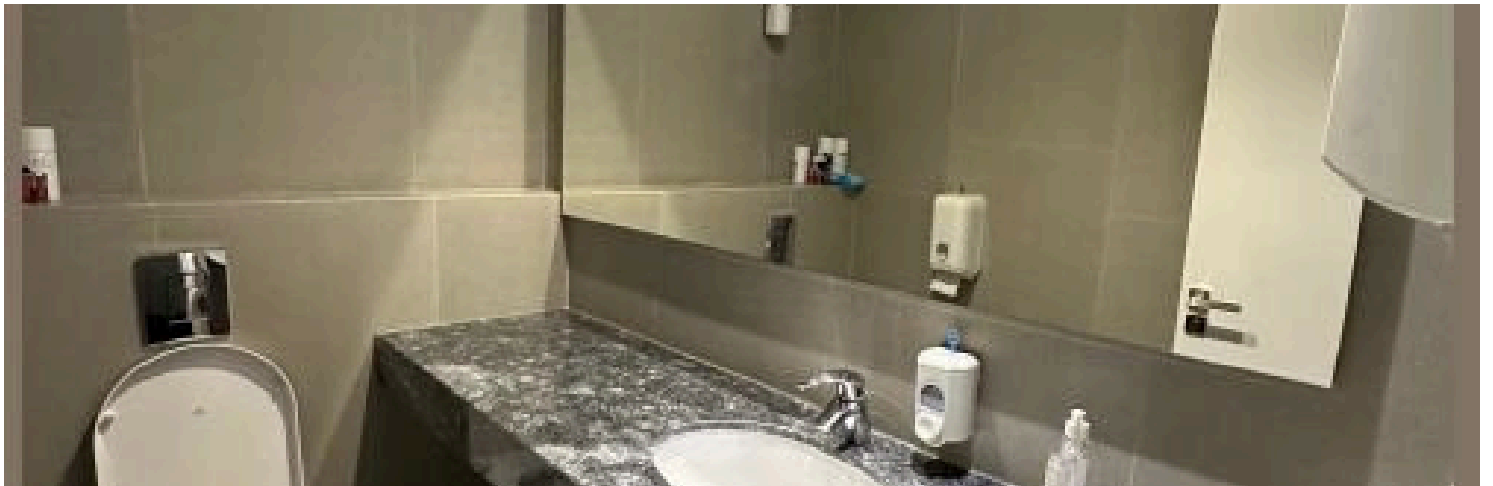
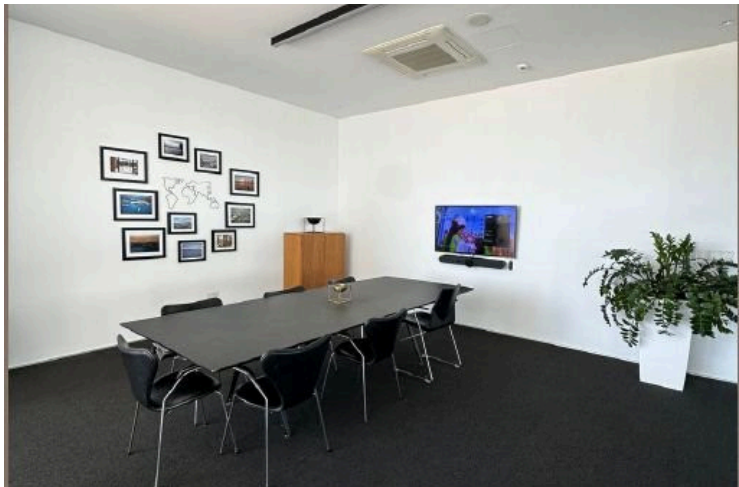
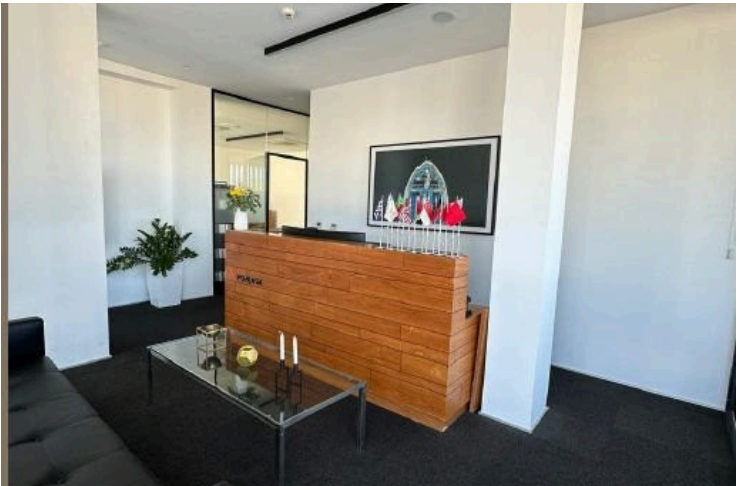
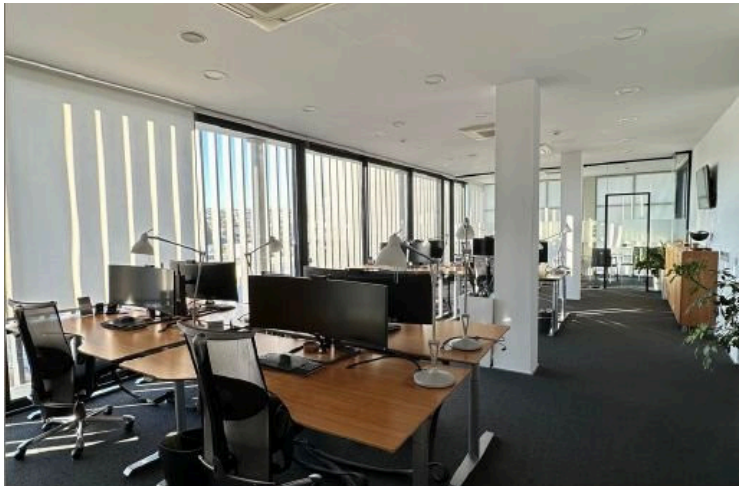
60182305

SPACIOUS OFFICE FOR RENT IN KOLONAKIOU STREET

 Linopetra, Limassol

€11,000 /month





Overview

Specifications

Bathrooms

 2

Covered

 225 m²

Type

Office

Toilets

2

Status

Used

Furnished

Unfurnished

Energy efficiency rating

 **A**

Description

Available for rent: a spacious top-floor office with a total internal area of 225 square meters.

Office space includes 2 separate spaces that can be used as a Meeting room or directors office / Reception welcome entrance / open plan working space /

Technical Specifications :

Raised Floors (60X60)

Glass Partitions

3 pipe VRV A/C system

Fiber Optic Internet

Server room

Shower room

Energy-saving curtain walling system

Thermal insulation and waterproofing

5 gated parking spaces

Roof garden with BBQ

Conveniently located close to the highway, this office offers excellent accessibility for employees and clients alike. It is ideal for businesses seeking a professional and efficient working environment in a high-standard building.



Floor plans



Additional information

Facilities

Aircondition, Central system

Elevator

Parking, Covered

Storage

Features

Alarm system (provision)

Connected to electric mains

Double glazing

Easy access to highway

Easy access to main roads

Energy efficient doors/windows

Entrance gate

Glass partitions

Kitchenette

Meeting room

Near bus route

Near public transport

Raised floors

Reception

Roof garden


Server room

Veranda

Contact us



Natalia Pot

 (+357) 96071780

 npot@vivorealty.com.cy

