

60182046

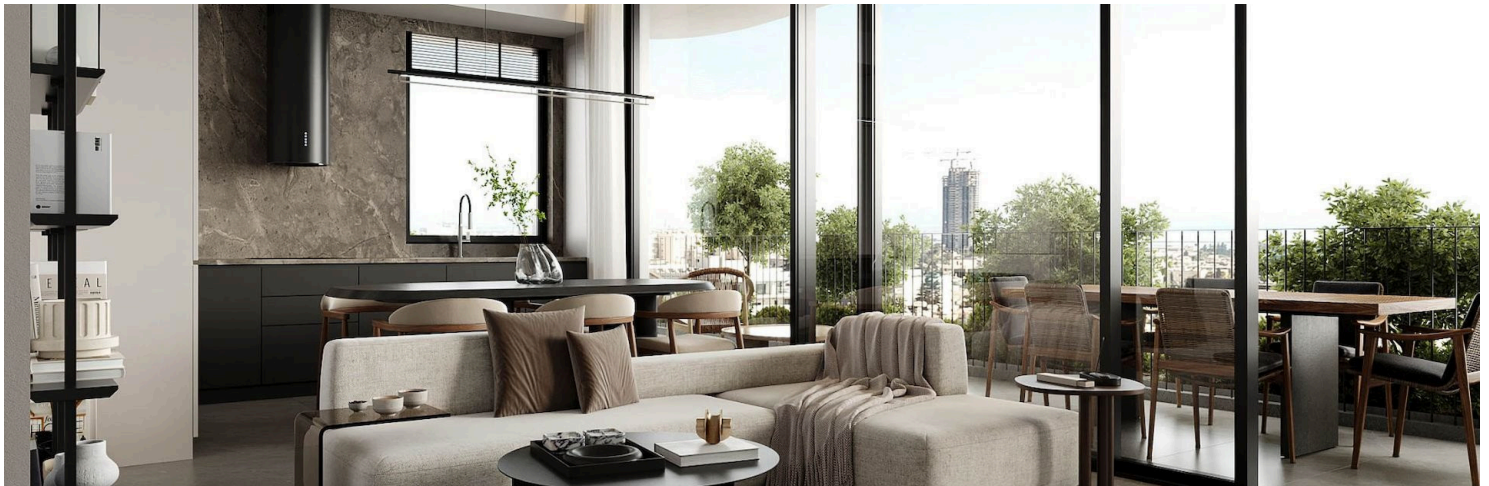
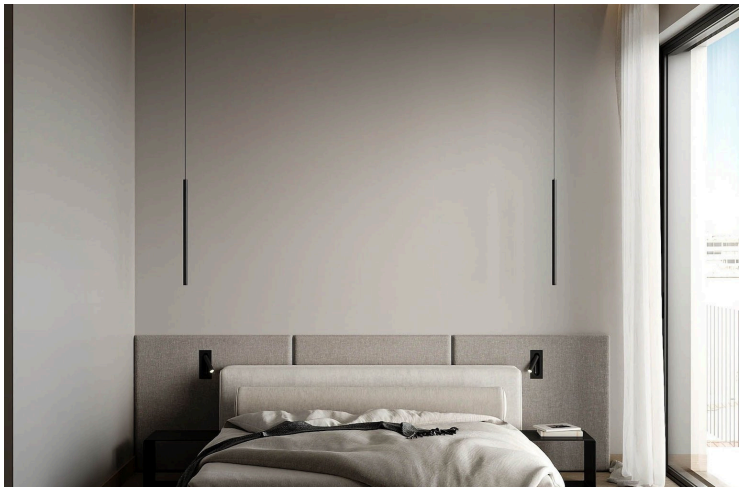
# TWO BEDROOM APARTMENT IN KATHOLIKI

 Katholiki, Limassol

**€395,000** +VAT







# Overview

## Specifications

Bedrooms


 2

Bathrooms

 2

Covered

 76 m<sup>2</sup>

Type	Apartment	Furnished	Unfurnished
Toilets	2	Energy efficiency rating	 A
Status	Off plan		

## Description

Discover a modern apartment for sale in the sought-after area of Katholiki. This spacious unit offers 76 m2 of internal space, featuring two well-designed bedrooms that provide comfort and privacy. Situated on the second floor of a four-story building with an elevator, this apartment offers convenience and easy access.

Katholiki is a vibrant neighborhood known for its unique blend of culture, amenities, and peaceful living. You will find beautiful parks, local shops, and delightful cafes just a short stroll away. The area is well-connected, making commuting and exploring the surrounding regions effortless. Families and young professionals alike are drawn to Katholiki for its friendly community vibe and quality of life.

Apartments Features :

Central VrV Air-Condition System

Photovoltaics & Net Metering for Each Apartment

Electric Vehicle Charge Provision for Each Apartment

Concealed Sanitary Mixers

Thermal Aluminum Lift & Slide - Floor-to-ceiling height doors

High Ceilings: +3m height

Ambient Entrance Lighting

Face Recognition Entry Video Phone

Interior Design Consultation

Automated Gate for Parking Area

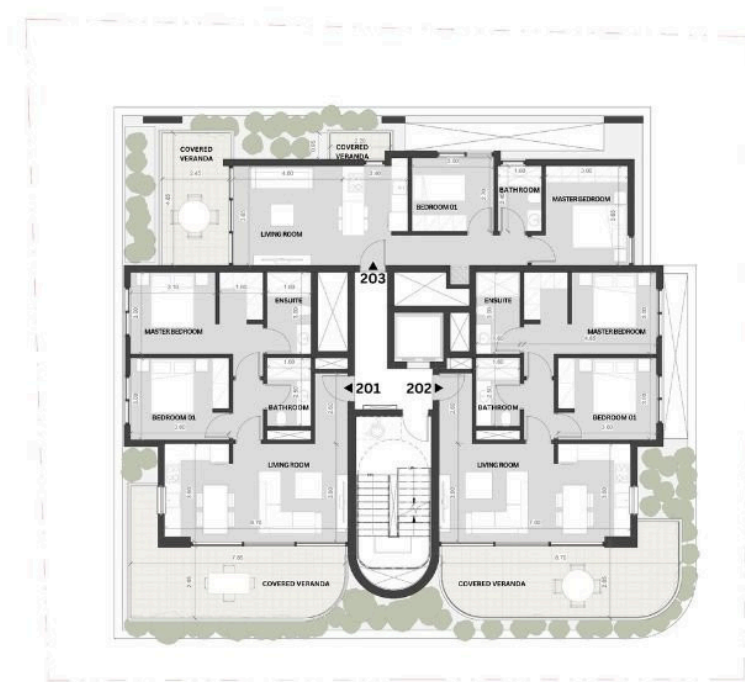
Heat Pump Boilers

Wifi Controlled Water Heate



# Floor plans

## ULYSSES 2nd FLOOR



APT	FLOOR	NO. of BEDROOMS	INDOOR COVERED AREA	COVERED VERANDA	ROOF GARDEN	COMMON AREA	TOTAL AREA	COVERED PARKINGS
201	2nd	2	75m <sup>2</sup>	22m <sup>2</sup>		9m <sup>2</sup>	105m <sup>2</sup>	1
202	2nd	2	76m <sup>2</sup>	22m <sup>2</sup>		9m <sup>2</sup>	106m <sup>2</sup>	1
203	2nd	2	61m <sup>2</sup>	17m <sup>2</sup>		7m <sup>2</sup>	85m <sup>2</sup>	1





# Additional information

## Facilities

Aircondition, Central system

Elevator

Parking, Covered

Solar photovoltaic panels

## Features

Combined kitchen and dining area

Connected to electric mains

Double glazing

Easy access to main roads

Electric car charger (provision)

En suite shower

Heart of city center

Modern design

Near amenities

Near bus route

Openings in opposite sides


Pressurized water system

Thermal insulation

## Contact us



**Natalia Pot**

 (+357) 96071780

 npot@vivorealty.com.cy

