



VIVO
REALTY

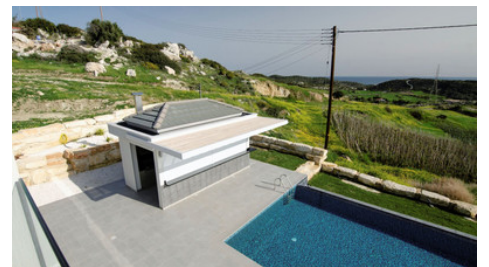
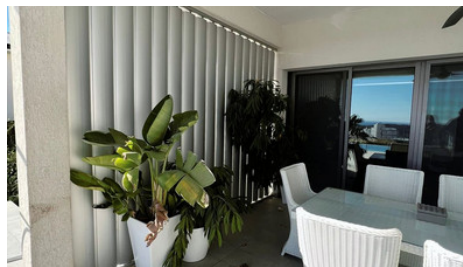


5+ 1 BEDROOM SEA VIEW VILLA FOR RENT IN PARREKLISSIA

📍 Limassol, Pareklisia

60181608





Rent	€5,500 /month	Type	Detached Villa
Bedrooms	5	Bathrooms	5
Covered	420 m ²	Plot	1007 m ²
Status	Key ready	Energy efficiency rating	A
Area	Limassol, Pareklisia		

Description

Spacious Sea view Villa available for rent ,

Villa is located in the suburbs of Limassol , Pareklissia area within short proximity to all necessary amenities such us Schools , Doctor offices , , Pharmacies , bakeries , Mini supermarkets etc. , within easy driving access to the highway and only a 7 minute drive to the Saint Raphael beach

Ground floor level consists of :

Open plan living space with dining area

Open plan kitchen (including all appliances - Brands : Miele / Bosch)

Two sided fire place

Utility room (with washing machine & tumble dryer , & a second fridge/ freezer plus a oven with hob)

A mezzanine level room that can be used as a game room / TV Room or an office space)

All ground floor space is surrounded with large double glazed windows making the space very bright with natural light complementing mountain and sea view

First floor consists of ;

4 En-suite bedrooms with walk in closets (The 2 bedrooms lead to a large balcony with sea and mountain view)

Lower Ground floor consists of :

A 5th en-suite bedroom that can be used as a maids quarter & a bedroom sized storage room

Garden area :

10 X 5 Swimming pool with salt water system

BBQ / BAR area - includes 2 drink fridges / Sink / Hob / Stainless steel BBQ & electric shutters

Garden with bore hall irrigation for lawn and trees

Underfloor heating on Ground floor area & Central heating on the first

Mosquito nets through out the house

A/C in all areas

garden and pool maintenance included in the price

Villa will be tenancy ready on the 20th of December



Natalia Pot

Property Consultant

✉ npot@vivorealty.com.cy

☎ (+357) 96071780

Facilities

Aircondition, Split system
Parking, Garage, double
Storage

Heating, Underfloor
Pool, Private

Features

Thermal insulation
Spacious rooms
Connected to electric mains
Fitted wardrobes
Garden
Parquet flooring
Guest WC
En suite Bathroom
Sea view
Indoor Fireplace

Combined kitchen and dining area
High ceilings
Balcony
Fly screens
Mountain view
Double glazing
Quiet Area
En suite Shower
Near amenities
Marble stairs