

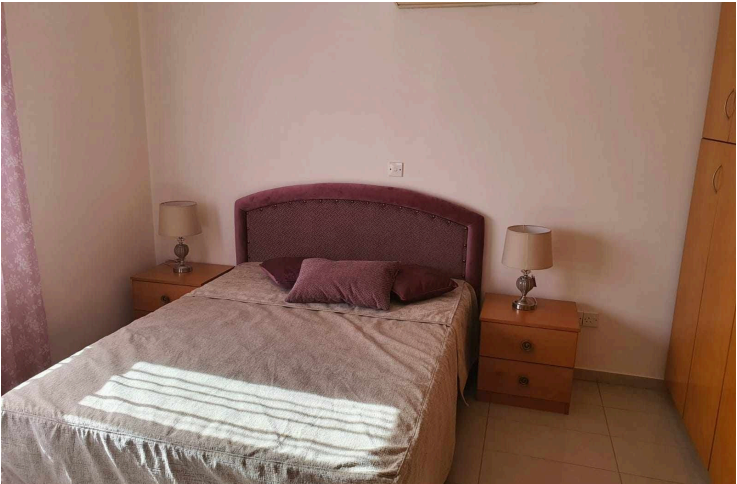
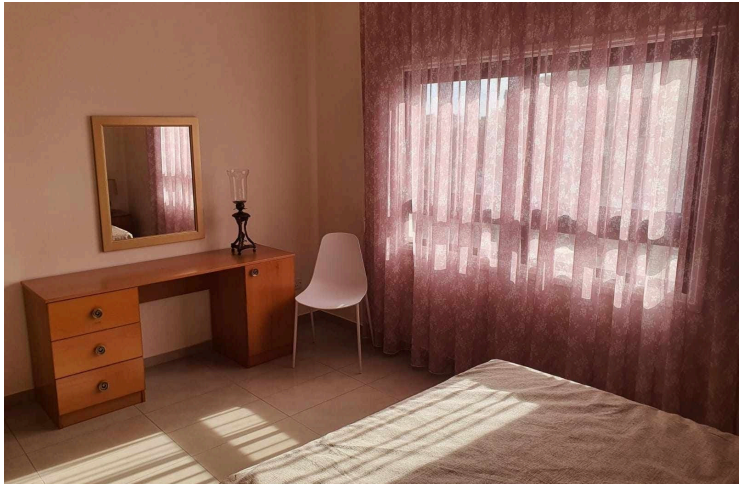
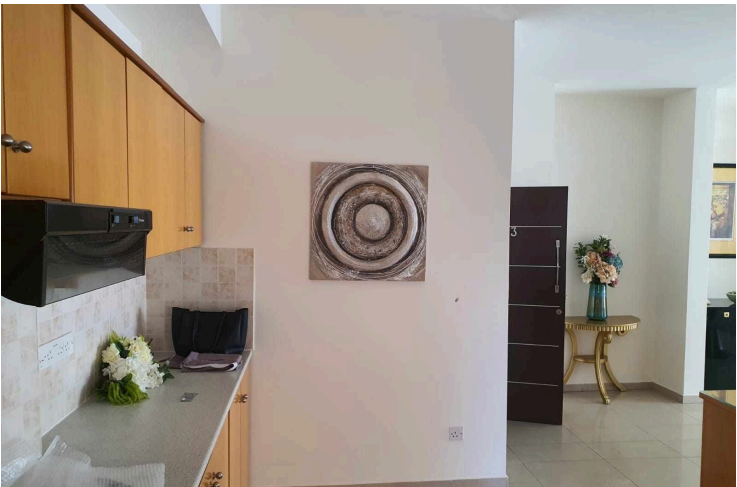
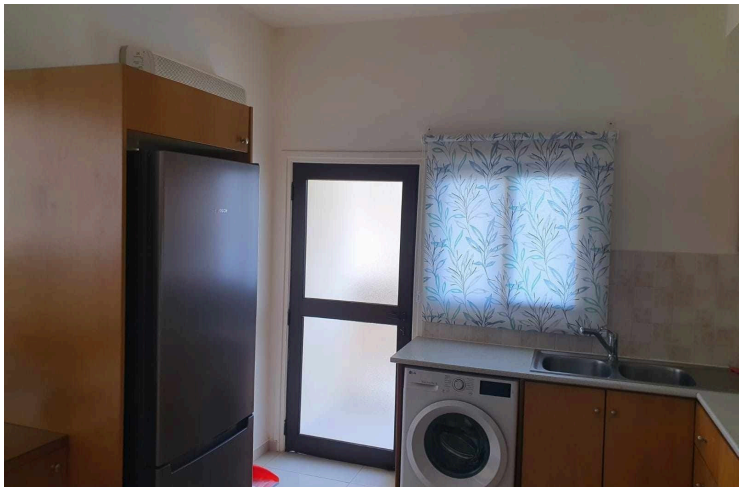
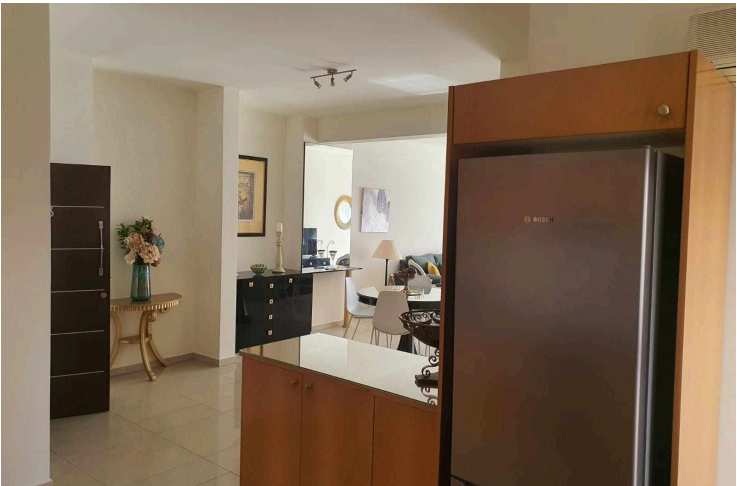
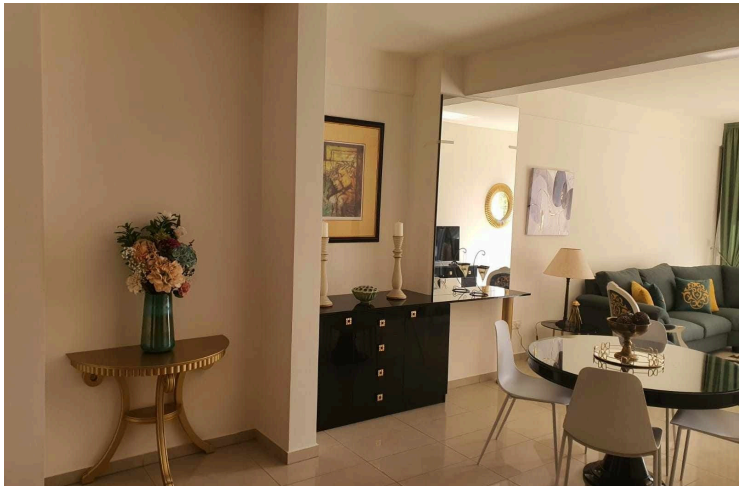
60180406

TWO BEDROOM APARTMENT FOR RENT IN PETROU KE PAVLOU

 Petrou & Pavlou, Limassol

€1,800 /month ~~€2,000~~





Overview

Specifications

Bedrooms

 2

Bathrooms

 1

Covered

 96 m²

Type

Apartment

Status

Key ready

Toilets

1

Furnished

Fully furnished

Description

Spacious apartment available for rent , located next to debehahms Apollo and Makarios Av. close to all amenities (supermarket located on your doorstep)

Open plan living area with a balcony , 2 spacious bedrooms with fitted wardrobes and one main bathroom p , the apartment has plenty of storage space , Video door entry system (CCTV)

Basement parking available for 1 cars with indoor connection with the elevator to take you right to the apartment floor

Apartment is not pet friendly

Additional information

Facilities

Aircondition, Split system

Elevator

Parking, Underground

Solar photovoltaic panels

Features

Balcony

Bright

Double glazing

Easy access to main roads

Fitted wardrobes

Guest WC

High ceilings

Near amenities

Near bus route

Open plan


Parquet flooring

Roller blinds

Contact us



Natalia Pot

 (+357) 96071780

 npot@vivorealty.com.cy