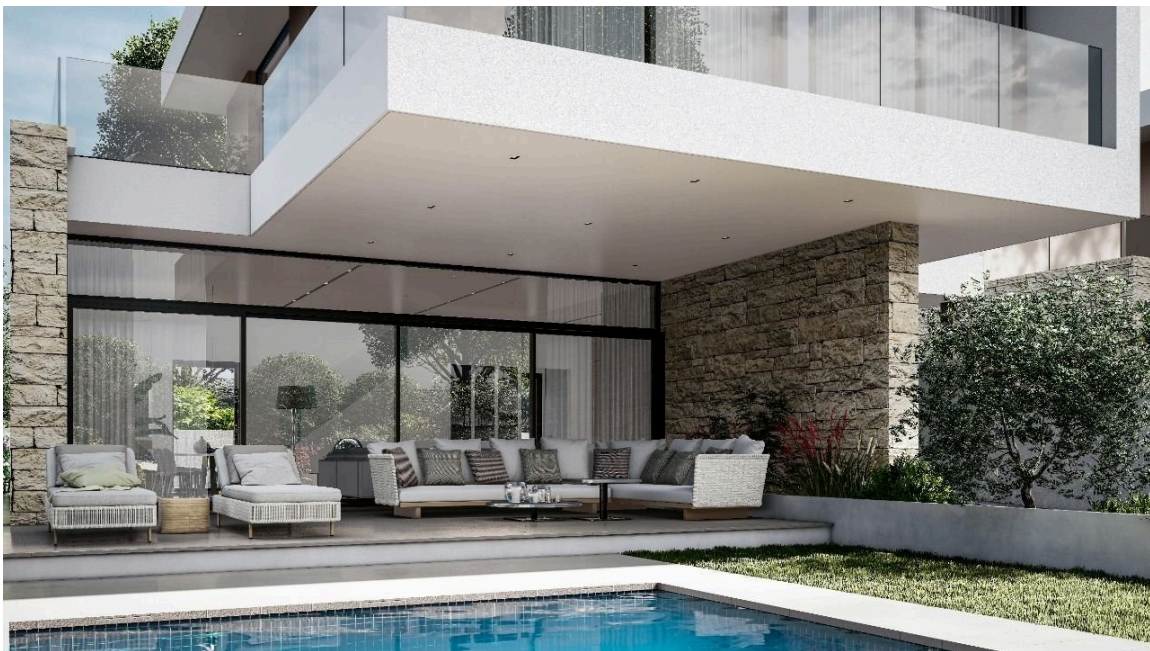




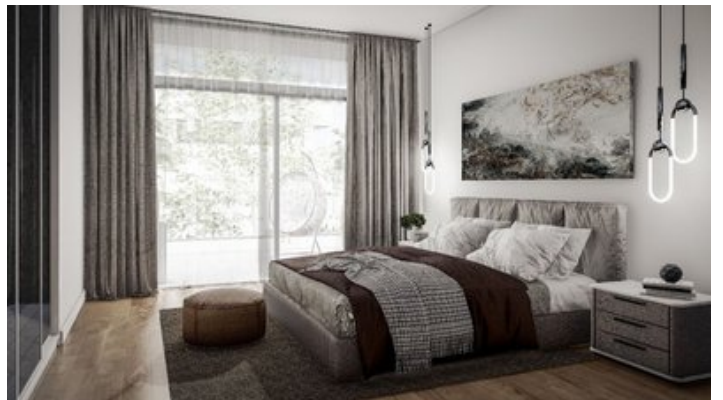
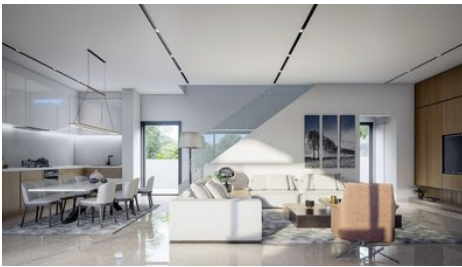
VIVO
REALTY



THREE BEDROOM CONTEMPORARY HOUSE FOR SALE

 **Limassol, Moni**

60178910



Price	€640,000 +VAT	Type	Detached Villa
Bedrooms	3	Bathrooms	2
Covered	142 m ²	Plot	513 m ²
Status	Off plan	Energy efficiency rating	A
Area	Limassol, Moni		

Description

Contemporary and minimal detached house for sale located in Moni village :

Home description :

Ground floor :

Open plan living space with kitchen and access to the garden

One guest toilet

Covered parking

a store room

First floor :

3 bedrooms (including one master bedroom - en-suite with bathroom

One main bathroom

Location:

A residential complex which will consist of 5 Town Villas with magnificent gardens The Villas are located at Moni Area, Limassol, 7 minutes from Germasogeia Roundabout and about 2 minutes away from Park Lane Hotel.

Important to note that the project's Energy Efficiency will be A+ (Green Energy Houses).

Materials :

-Italian and Spanish marble tiles.

-Windows : High quality aluminum thermal series with double glazing energy efficient glass.

- Kitchen : Hinged veneered high quality varnished mdf door with granite worktop.

- Kitchen appliances : Built-In Appliances with Innovative Technology

- Provision of automation/smart home systems and electrically operated blinds/shutters for windows.

-Complete security system in all areas including CCTV and high-tech technology measures for access to the premises.

-Heating and Cooling

Central VRV system with indoor independent ceiling concealed units and electrical under-floor heating system.

Total covered area including verandas and garage : 214 sq.
House area (Net inside area) : 142 sq.

Completion : 2024



Natalia Pot

Property Consultant

✉ npot@vivorealty.com.cy

☎ (+357) 96071780

Facilities

Aircondition, Central system

Parking, Covered

Storage

Solar photovoltaic panels

Heating, Underfloor

Pool, Optional

Solar water heater

Features

Thermal insulation

Combined kitchen and dining area

Openings in opposite sides

Internal stairs

Alarm system

Guest WC

Quiet Area

En suite Bathroom

Kitchen appliances

Bathroom underfloor heating

Connected to electric mains

Fitted wardrobes

Open plan

Double glazing

Veranda

CCTV

Modern design