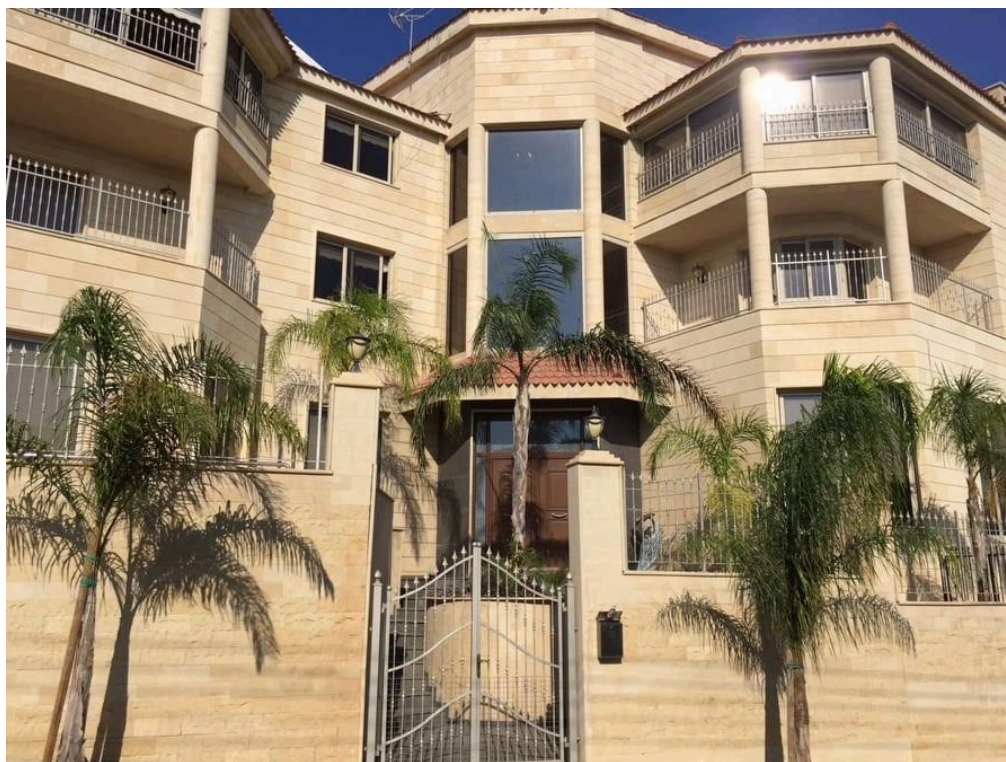




VIVO
REALTY

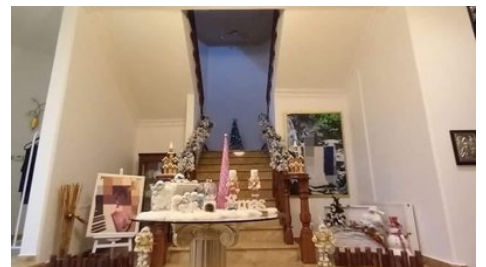


MASSIVE VILLA OF 7 BEDROOMS WITH PANORAMIC VIEWS FOR RENT

📍 [Limassol, Agia Fyla- Laiki Lefkothea](#)

60178477





Rent	€10,000 /month	Type	Detached Villa
Bedrooms	7	Bathrooms	7
Covered	750 m ²	Plot	900 m ²
Year of Construction	2013	Status	Key ready
Area	Limassol, Agia Fyla- Laiki Lefkothea		

Description

7 bedrooms spacious villa with panoramic city and sea views thought out views through out - Located in a prominent area of Laiki Lefkothea, Limassol.

The villa is consist of 3 floors in total :

On the Ground floor you will walk into the entrance of the house with high ceilings , a spacious living area with large windows and a fireplace a extra playroom/office area, A Separate Kitchen (which is currently being changed into new italian woodwork) with fireplace and a big storage room. (with a laundry room) + a guest toilet

Basement consists of a :Maids Room, with bathroom, & Kitchen also the garage entrance with a lift to take you to any of the 3 floors of the house

FIRST LEVEL: A Big Master bedroom with excellent views (en-suite bathroom and walk in wardrope) + another 2 en-suite rooms with verandas.

SECOND LEVEL: Big master bedroom with Panoramic views (en-suite with a walk in closet) , a Cinema room a kitchen and a office/dining area.

THIRD LEVEL: Big Master bedroom with en-suite bathroom and a large walk in closet. , One more bedroom , a kitchen , dining room, guest toilet and a home cinema.

LOFT: Maids room with bathroom

The house is very spacious areas , generous bedrooms it features 7bedrooms in total sets - 7 bathrooms in total with , 3 guest WCs,

The outside area consists of a 30sqm pool for the summer days and a playground area & 2 covered parking spaces.

In summary :

living rooms: 2

Kitchens: 3

Bedrooms: 7

Bathrooms: 7

Guest WC: 3

Home Cinema

Central heating

Full A/C

Pool 30 sq..

Covered parking

A house that must be seen to be appreciated



Natalia Pot

Property Consultant

✉ npot@vivorealty.com.cy

☎ (+357) 96071780

Facilities

Aircondition, Split system
Parking, Garage
Elevator
Maid's room
Solar photovoltaic panels

Heating, Central
Pool, Private
Storage
Solar water heater

Features

Separate dining area
Easy access to highway
High ceilings
Openings in opposite sides
Balcony, front
Fitted wardrobes
Entrance gate, automated
Home cinema
Pressurized water system
City view
Kitchenette
Guest WC
En suite Bathroom
Luxury specifications
Indoor Fireplace
Kitchen appliances

Easy access to main roads
Combined kitchen and dining area
Connected to electric mains
Balcony, back
Balcony
Utility room
Spiral staircase
Fly screens
Bright
Open plan
Double glazing
Quiet Area
En suite Shower
Near bus route
Laundry room