

60177815

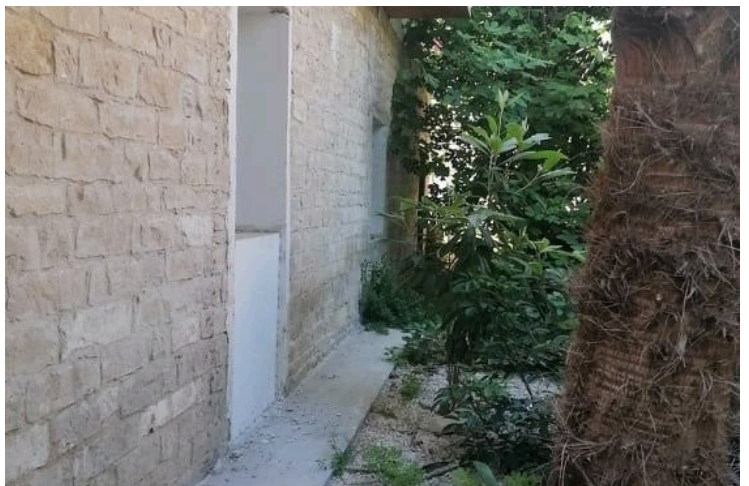
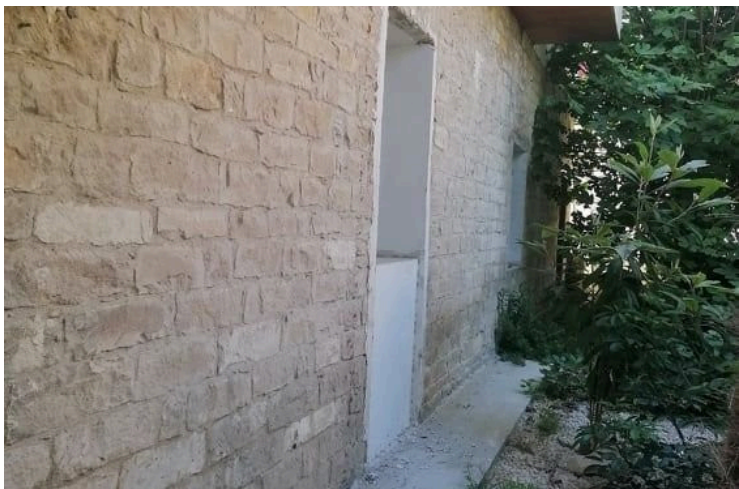
# TWO STORY DETACHED TRADITIONAL VILLA BUILT IN THE 1920s

📍 Limassol, City Center, Limassol

€1,500,000







# Overview

## Specifications

Bedrooms

 **8**

Bathrooms

 **3**

Covered

 **300 m<sup>2</sup>**

Type	<b>Detached Villa</b>
Toilets	<b>4</b>
Plot	<b>556 m<sup>2</sup></b>
Status	<b>Resale</b>

Year of construction	<b>1929</b>
Furnished	<b>Unfurnished</b>
Structure	<b>Steel</b>

## Description

Traditional Villa for sale situated in the graphic historical area of the Limassol Center , A Unique property that was built in 1929 and still stands with its traditional characteristics until this day

The property has been owned by the same family through three generations ,  
Wood flooring and Mosaic floors have been left untouched but well preserved in some spaces of the property

This is a 2 storey building with an outdoor access to the upper floor ( But has provision for a internal staircase if desired )

### Ground Floor

As most Traditional properties in Cyprus when walking in you will find an entrance hall with 1 bedroom on each side walking in there is a separated renovated kitchen , and another 2 bedrooms + two bathrooms with shower

### Upper floor :

High ceiling entrance hall - with mosaic flooring , 4 bedrooms , a seperate kitchen and one main bathroom and a guest W,C

The property in general has a very open plan space with large windows through out ( they have been internally renovated to double glazing windows ) making it very bright with natural light

# Additional information

## Facilities

Parking, Uncovered

Storage

## Features

Balcony

Ceramic tiles

Double glazing

Easy access to main roads

Entrance gate

Ground floor bedroom

Mosaic tiles

Near amenities

Near bus route

Open plan

Parquet flooring

Separate dining area

Veranda, back


Walking distance to beach

Wooden flooring

## Contact us



**Natalia Pot**

 (+357) 96071780

 npot@vivorealty.com.cy