



VIVO
REALTY

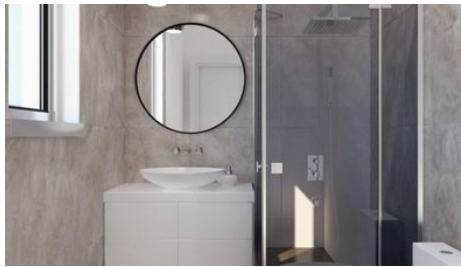
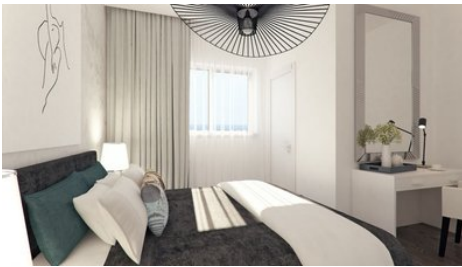


TWO BEDROOM APARTMENT IN NEAPOLIS AREA WITH SEA VIEWS AND WALKING DISTANCE TO THE BEACH

 **Limassol, Neapolis**

50178299





Price	€617,800 +VAT	Type	Apartment
Bedrooms	2	Bathrooms	1
Covered	83 m ²	Covered veranda	20 m ²
Covered parking	15 m ²	Year of Construction	2022
Status	Off plan	Floor	2 / 4
Area	Limassol, Neapolis		

Description

The Project is located in Neapolis , a famous commercial center in Limassol, just over 100 meters from the beautiful and prosperous promenade, and a 1 minute walk to the beach. It is prosperous and convenient, sitting in a prime location, adjacent to Limassol landmarks, and enjoying the most beautiful sea views.

It is created by a famous Italian designer, with a modern appearance, bright and simple colors, and unique temperament into the beautiful

Mediterranean city center. The apartment is divided into 4 floors of residences, the first floor and basement are garage spaces, and each owner is equipped with storage rooms on the garage floor The spacious and bright apartment is an excellent choice for self occupation and business investment. The main apartment types are 83 square meters of 2 bedrooms and 50 square meters of 1 bedroom In the seaside commercial center with an inch of land, it is worth owning whether it is self occupation or investment.

Project will start beginning of 2022 and approximately will be ready in 14-16 months.



Office Properties

Office Administrator

✉ info@vivorealty.com.cy
☎ (+357) 25871010

Facilities

Aircondition, Provision

Parking, Covered

Storage

Heating, Provision

Elevator

Solar water heater

Features

Shower

Combined kitchen and dining area

Municipal water/sewage

Pressurized water system

Bright

Alarm system, Provision

Guest WC

CCTV, Provision

Luxury specifications

Panoramic view

Near bus route

Heart of city center

Connected to electric mains

Balcony

Painted

City view

Double glazing

Veranda

En suite Shower

Modern design

Walking distance to beach

Near amenities