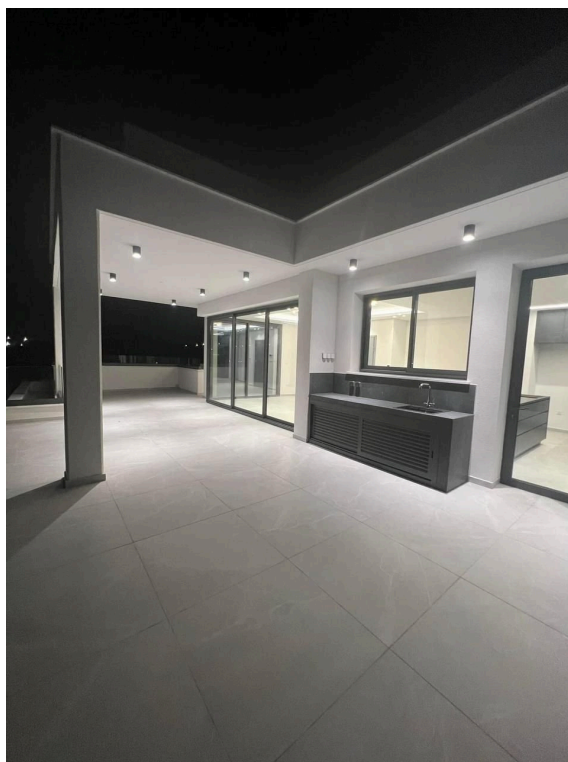




**VIVO**  
REALTY

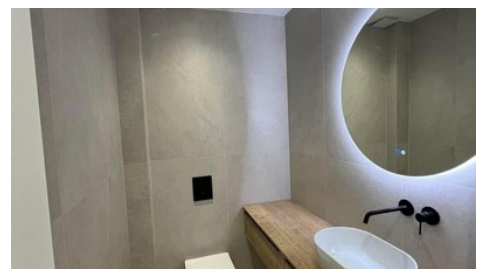
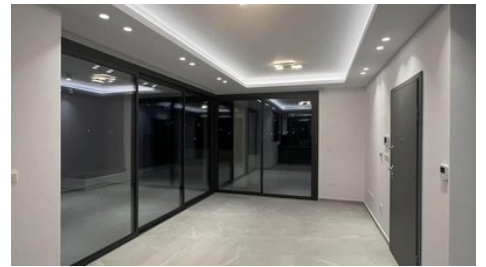


## LUXURY AND MODERN THREE BEDROOM PENTHOUSE APARTMENT IN AGIOS ATHANASIOS

 [Limassol, Agios Athanasios](#)

50178136





<b>Price</b>	€750,000 +VAT	<b>Type</b>	Apartment
<b>Bedrooms</b>	3	<b>Bathrooms</b>	1
<b>Covered</b>	117 m <sup>2</sup>	<b>Covered veranda</b>	32 m <sup>2</sup>
<b>Uncovered veranda</b>	94 m <sup>2</sup>	<b>Year of Construction</b>	2021
<b>Status</b>	Key ready	<b>Energy efficiency rating</b>	A
<b>Floor</b>	Penthouse / 3	<b>Area</b>	Limassol, Agios Athanasios

## Description

Under construction a three bedroom penthouse apartment in the prestigious area of Agios Athanasios. As you can see in the 3d pictures around the building there are only green areas and parks, something that gives to the building besides the unique location, privacy and open plan view in all directions. Agios Athanasios is the most demanding area in Limassol. Situated north of the city with easy access to the highway.

Apartment consists of the three bedrooms, master bedroom with ensuite shower and toilet, bathroom, guest toilet and living room combined with the kitchen. Three separate spacious verandas , covered or not, complete the property. Some of the main characteristics are the double glaze windows , sauna, solar panel, water pressure system, a/c provisions and underfloor heating, electric gate, outside door screen and covered parking with storage. Total apartments in the building are six, three in the first floor, two in the second floor and one in the top floor.



### Office Properties

Office Administrator

✉ info@vivorealty.com.cy

☎ (+357) 25871010

## Facilities

Aircondition, Provision  
Parking, Covered  
Storage  
Solar photovoltaic panels

Heating, Underfloor  
Elevator  
Solar water heater

---

## Features

Shower  
Easy access to highway  
Combined kitchen and dining area  
Municipal water/sewage  
Balcony, back  
Balcony  
Pressurized water system  
City view  
Alarm system, Provision  
Guest WC  
Veranda, front  
Veranda  
Granite countertops  
Luxury specifications  
Country view  
Sea view  
Near amenities

Easy access to main roads  
Bathroom underfloor heating  
Spacious rooms  
Next to green area  
Balcony, front  
Entrance gate, automated  
Bright  
Mountain view  
Double glazing  
Veranda, back  
Veranda, large  
Quiet Area  
En suite Shower  
Modern design  
Panoramic view  
Near bus route  
Jacuzzi

