

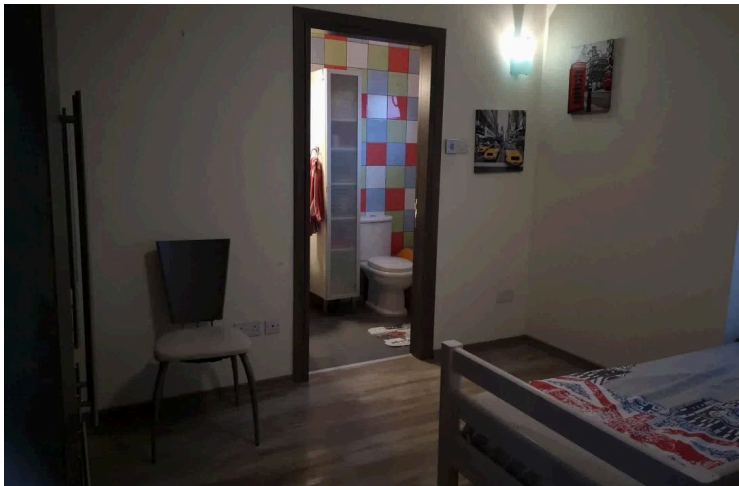
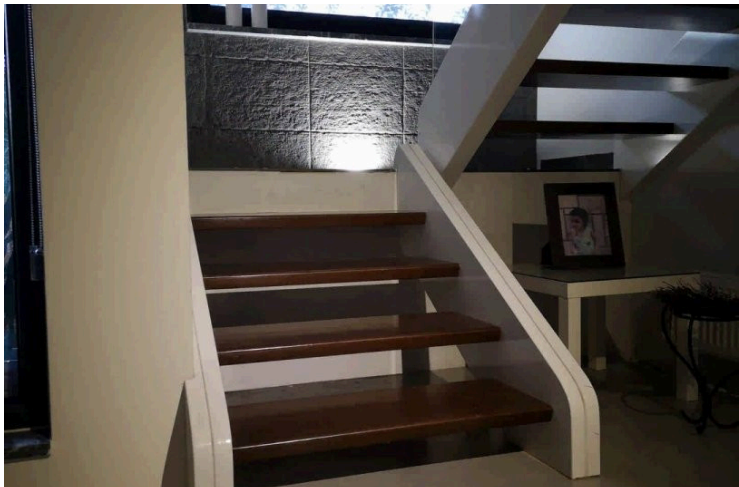
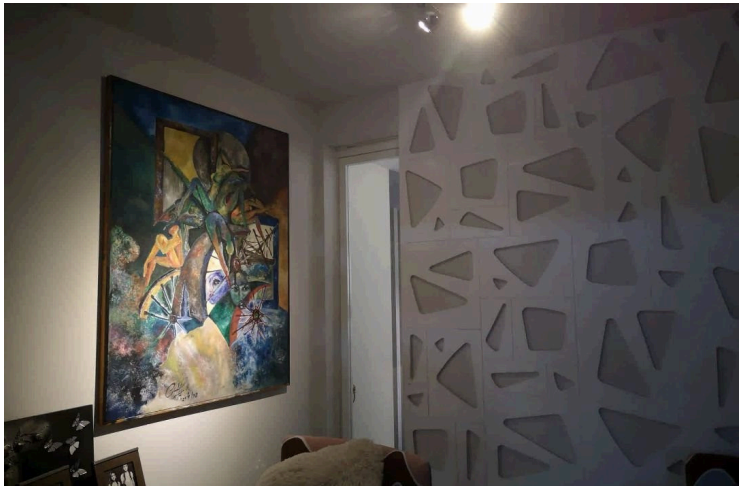
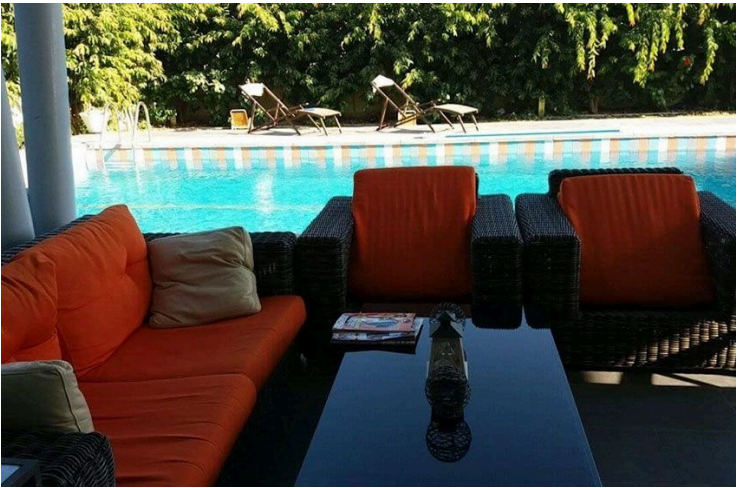
50175423

DETACHED LUXURY 5 BEDROOM VILLA IN ERIMI

 Erimi, Limassol

€630,000 ~~€799,000~~





Overview

Specifications

Bedrooms

 5

Bathrooms

 2

Covered

 300 m²

Type	Detached Villa
Toilets	5
Plot	812 m²
Status	Resale

Year of construction	2013
Title deed	Yes
Furnished	Partially furnished

Description

This detached luxury villa is situated just 5 minutes from Limassol in Erimi , in a quite and peaceful area. Has modern design-Bioclimatic house.

Constructed on 2013 and is in great condition. Plot size is 812 sqm and covered areas 300 sqm.

Has 5 bedrooms , 1 on the ground floor with separate entrance suitable for domestic help and 4 on the first floor.

Living room, kitchen with family room, Office on the ground floor 5X4, Laundry room on the ground floor 5x2, there are 7 WCs, 6 showers and a bathtub (There are 5 wc bedrooms and a shower in addition to the Master Bedroom. There is a bathtub. One WC with shower is outside the pool)

Master Bedroom Wardrobe, pool 5X10, central gas heating, alarm system, smoke detectors connected to the alarm system everywhere, covered parking for two cars with electric rail and unoccupied parking for one more car, smart Home for Lights, photovoltaics connected to the Electricity meter, central vacuum cleaner system, provision for air conditioning throughout the premises and two air conditioners in the Master Bedroom and office.

Bioclimatic Building with wooden frame and Cypriot brick on all exterior walls. All exterior walls are double. One made of wood and one made of Cypriot brick. In between there is a double rock wool (for thermal and sound insulation). Rock wool is also present on all interior walls and ceilings, making the home an A + energy class. Central heating and air conditioning are rarely used.

Title deeds ready.

Additional information

Facilities

Aircondition, Split system

Landscaped garden

Pool, Private

Childrens playground

Outdoor shower

Solar photovoltaic panels

Heating, Central

Parking, Covered

Storage

Features

Alarm system

Courtyard

Entrance gate, automated

Ground floor bedroom

Indoor fireplace

Kitchen appliances

Marble flooring

Near bus route

Quiet area

Shutters

Balcony

Double glazing

Garden

Guest WC

Internal stairs

Laundry room

Modern design

Next to green area

Roller blinds

Veranda

Barbeque

En suite bathroom

Garden, large

Guestroom

Internet

Luxury specifications

Near amenities

Office

Roof garden

Walk-in closet

Distances

Amenities



500 m

Airport



30 km

Sea



5 km

Public transport



1 km

Schools




1 km

Contact us



Marios Petrides

 (+357) 25871010

 mpetrides@vivorealty.com.cy