

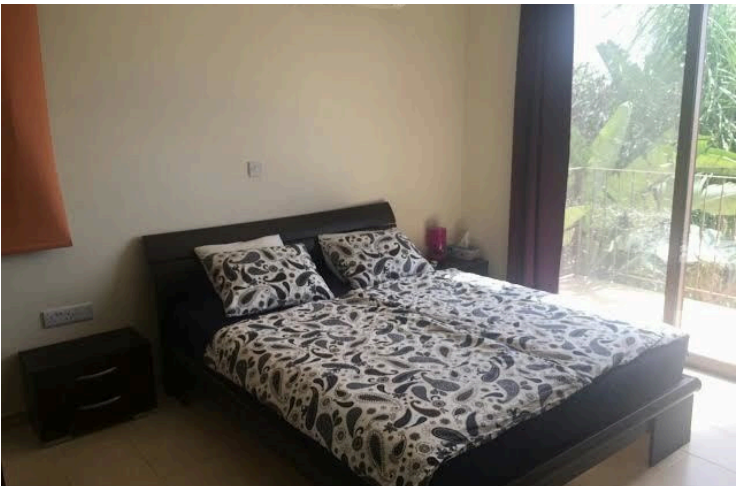
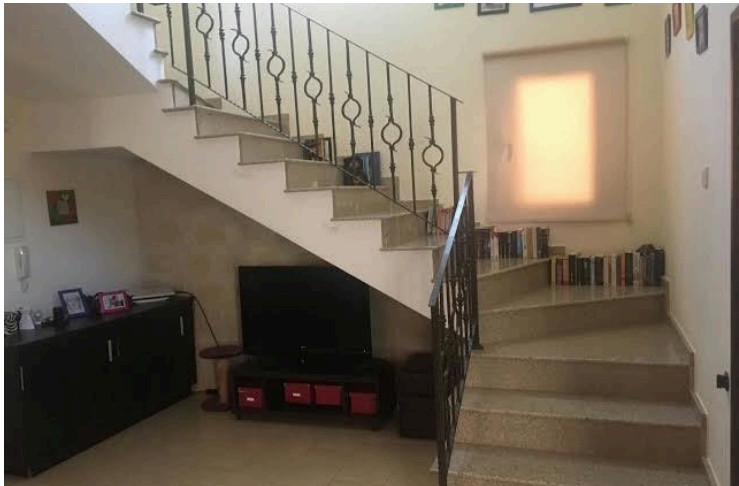
50174043

# THREE BEDROOM SEMI DETACHED HOUSE IN EPISKOPI

 Episkopi, Limassol

€270,000





# Overview

## Specifications

Bedrooms

 **3**

Covered

 **180 m<sup>2</sup>**

Type

**House**

Status

**Resale**

Plot

**321 m<sup>2</sup>**

Year of construction

**2008**

## Description

Episkopi village is situated only 10 minutes from Limassol in the western site of the city. Is close to My Mall and the new Casino. All amenities are available in the village such as schools, banks , supermarket, shops , kiosks. Pafos airport is just 20 minutes drive.

House built on 2008 in a plot of 320 square meters with covered areas 180 square meters. Spacious living room, guest toilet and fully equipped open plan kitchen in the ground floor and three bedrooms and full bathroom in the upper level. Master room with en suite. Double glaze windows, air conditions and central heating exists.

Parking for two or more cars as well with one of them covered. Storage place as well.

Area is very quite and has easy access anywhere.

# Additional information

## Facilities

Aircondition, Split system

Heating, Central

Parking, Covered

## Features

City view


Double glazing

Guest WC

## Contact us



**Marios Petrides**

 (+357) 25871010

 mpetrides@vivorealty.com.cy