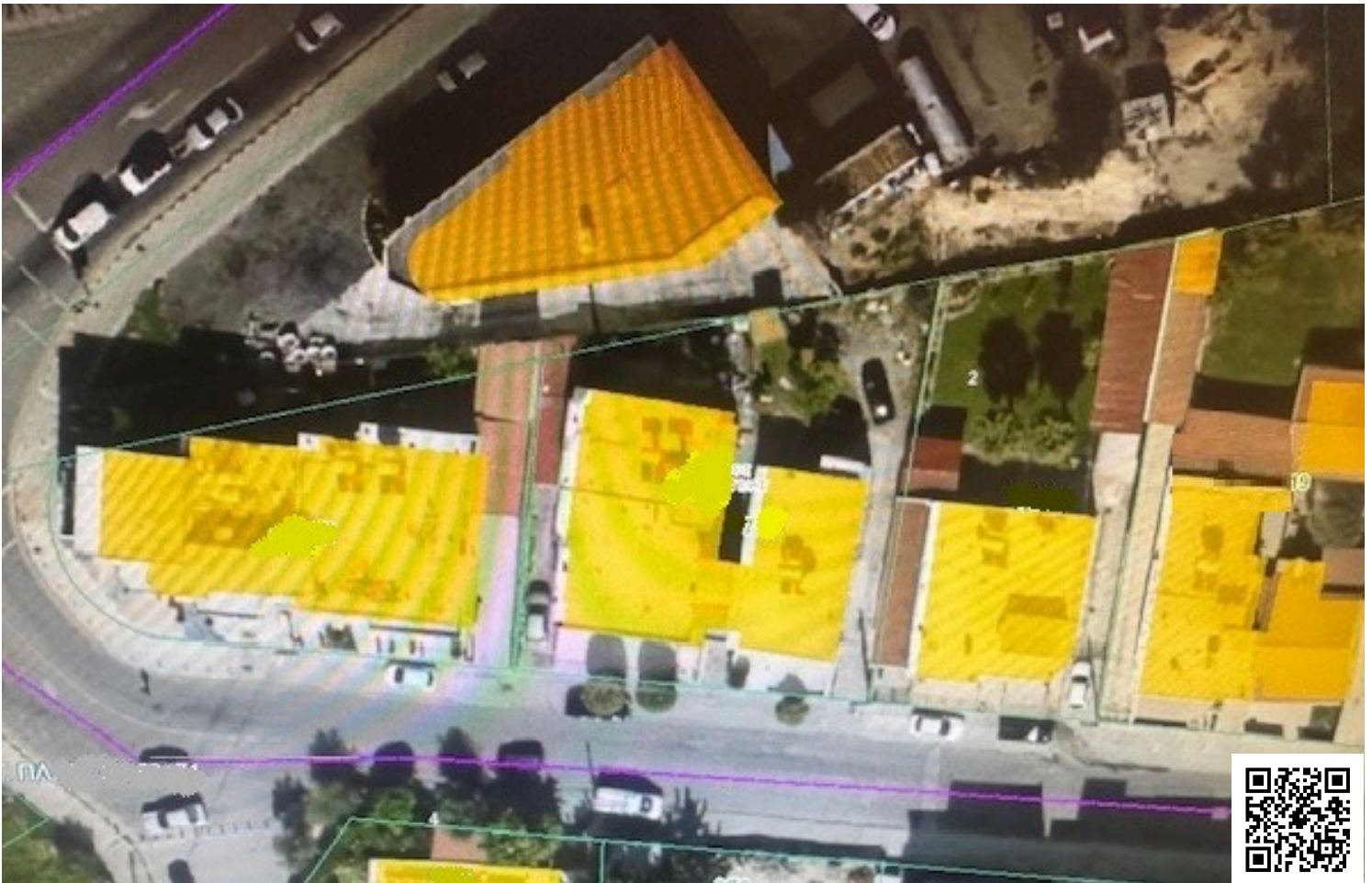


2185122

# BUILDING PLOT 361 m<sup>2</sup> IN POTAMOS GERMASOGIAS

 Potamos Germasogeias, Limassol

€515,000





# Overview

## Specifications

Area

 **361 m<sup>2</sup>**

Type	<b>Building Plot</b>	Title deed	<b>Yes</b>
------	----------------------	------------	------------

## Description

A prime building plot of 361m<sup>2</sup> is available in the highly desirable area of Potamos Germasogeias. This is a rare opportunity to secure land in one of the most sought-after locations, offering a peaceful residential setting combined with convenient access to top amenities.

Planning Details:

Building Density: 80%

Coverage: 45%

Maximum Floors: 3

Maximum Height: 13.5m

Potamos Germasogeias is well known for its family-friendly atmosphere, modern infrastructure, and attractive surroundings. A wide selection of shops, restaurants, and schools are nearby, making it an excellent choice for both families and individuals.

The plot is ideally located just a short distance from the highway, ensuring quick and easy access to other areas of the city and beyond. It offers the perfect balance of privacy and accessibility, making it ideal for the development of a three-storey apartment building or a high-quality investment property.

This property is exclusively listed by Vivo Realty. For further information or to arrange a viewing, please contact us today.



# Additional information

## Features

Easy access to highway

Easy access to main roads

Investment opportunity

## Planning zones

Zone	Cover factor	Build factor	Max height	Max floors	Affected percentage
Ka7	80%	45%	13.5 m	3	-

## Contact us



**Roula J. Andreou**

 (+357) 96650308

 rjalim1@vivorealty.com.cy

