

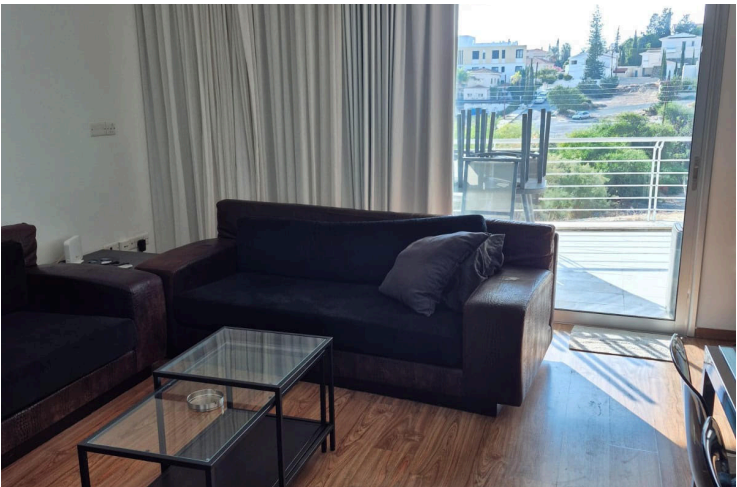
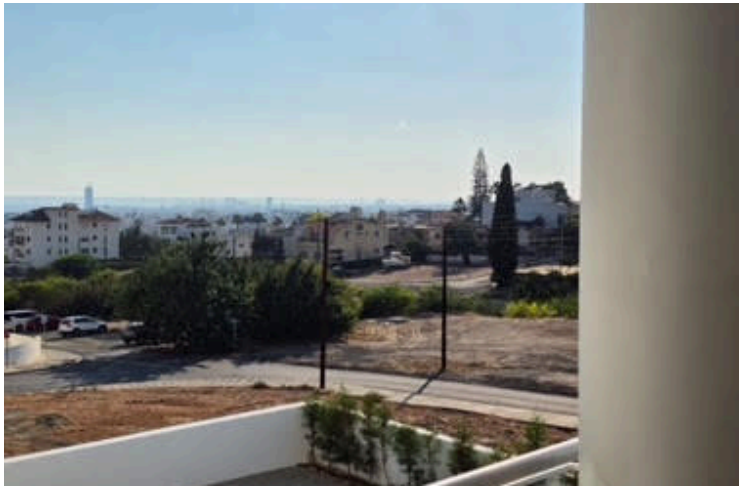
2183360

GROUND FLOOR APARTMENT IN PANTHEA WITH COMMON POOL!

 Panthea, Limassol

€390,000





Overview

Specifications

Bedrooms

 3


Bathrooms

 1

Covered

 98 m²

Type	Apartment
Toilets	2
Status	Key ready
Year of construction	2011

Furnished	Fully furnished
Communal charge frequency	Monthly
Energy efficiency rating	 A

Description

Welcome to this charming, fully furnished apartment, ready for you to move in, with an internal space of 98sqm and 100sqm verandas and garden area. This ground floor unit offers a comfortable and spacious living environment. It features three well-sized bedrooms, perfect for families or those needing extra room for guests or a home office.

The apartment boasts a modern bathroom, providing convenience and comfort, fitted kitchen with all electrical appliances, split unit A/C, 65' TV. The open layout of the living and dining areas makes it ideal for entertaining or relaxing after a long day. Large windows fill the space with natural light, creating a warm and inviting atmosphere.

Located in Panthea area above the highway, while nearby amenities ensure that grocery stores, pharmacies and recreational facilities are just a short distance drive away.

This apartment is a fantastic opportunity for anyone seeking a key-ready rental in a prime location. Don't miss your chance to make this your new home. Contact Vivo Realty today for more information or to schedule a viewing.



Additional information

Facilities

Aircondition, Split system

Parking, Covered

Heating, Split system

Solar water heater

Indoor pool, Communal

Features

Balcony

Double glazing

Fitted wardrobes

Kitchen appliances

Veranda, large

Bright

Easy access to highway

Garden

Near amenities

Combined kitchen and dining area

Easy access to main roads

Guest WC

Open plan

Contact us



Roula J. Andreou

 (+357) 96650308

 rjalim1@vivorealty.com.cy

