

2182130

NEW 2 BEDROOM APARTMENT IN PANTHEA!

 Panthea, Limassol

€450,000 +VAT





Overview

Specifications

Bedrooms

 2

Bathrooms

 2

Covered

 91.7 m²

Type	Apartment
Showers	1
Toilets	2

Status	Under construction
Year of construction	2025

Description

For sale: a modern apartment under construction in the desirable area of Panthea. This stylish, well-designed home offers 91.7 m² of internal space, featuring two spacious bedrooms and two contemporary bathrooms. Situated on the second floor of a three-story building, this apartment is set to be completed in 2026, making it a perfect opportunity for those seeking a brand-new living experience.

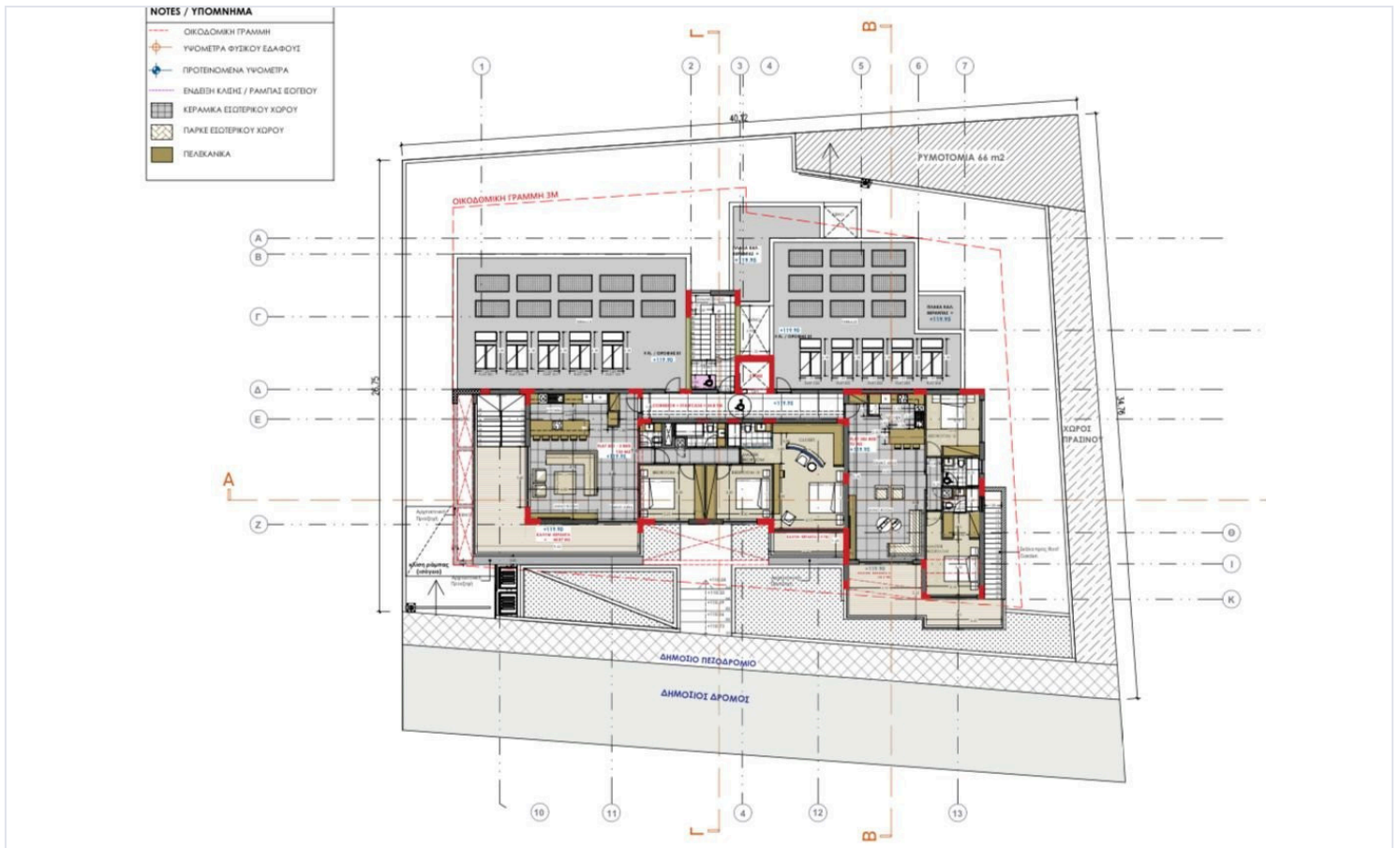
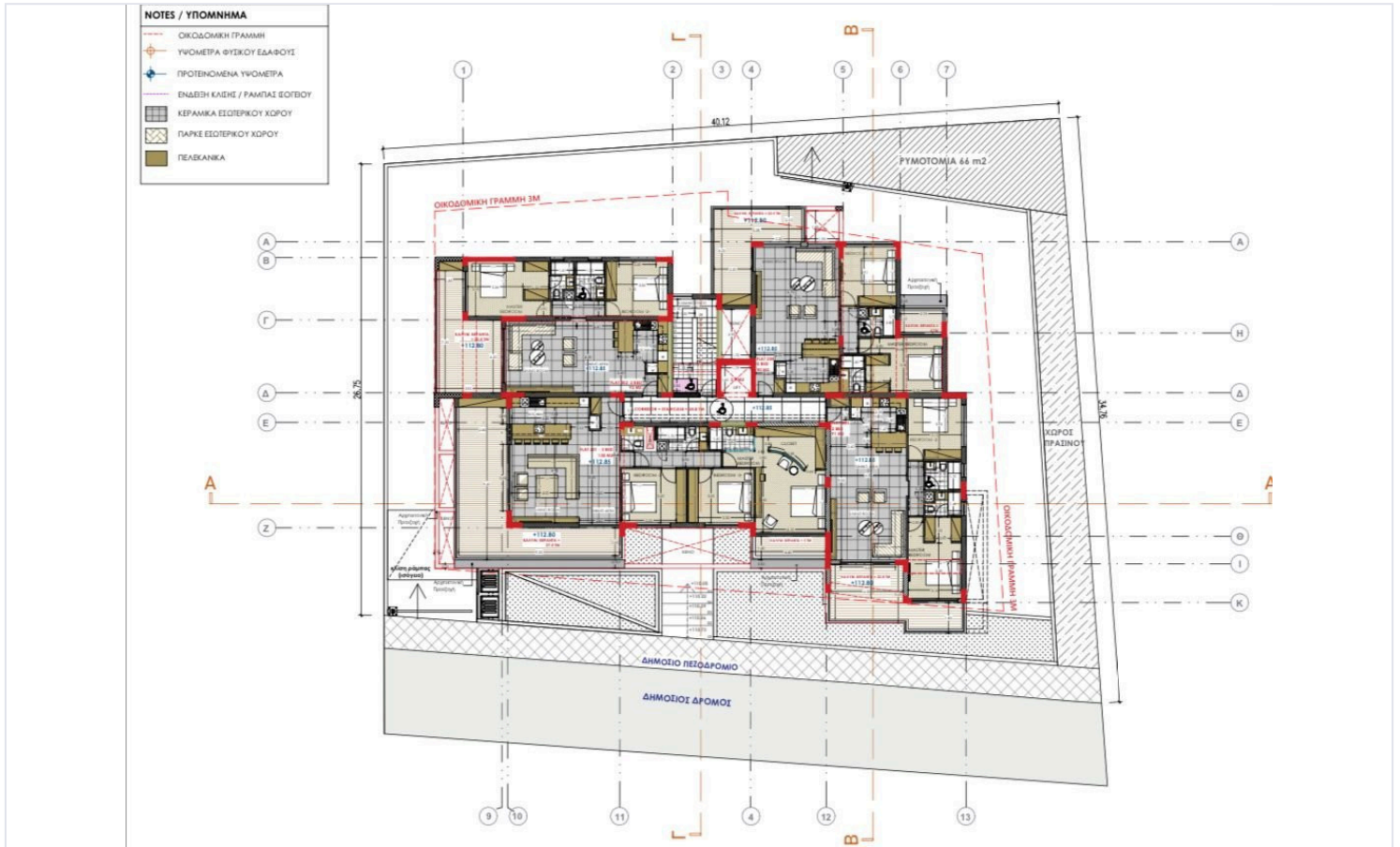
Panthea is known for its charming neighborhoods and vibrant atmosphere. The area boasts beautiful views, with easy access to parks and recreational facilities. Residents enjoy the convenience of nearby amenities, including shops, restaurants, and schools, all just a short distance away. Furthermore, its close proximity to the highway ensures effortless travel to surrounding areas.

This apartment is designed for comfort and efficiency, featuring a central AC system and underfloor heating, providing a cozy environment year-round.

Don't miss out on this opportunity to own a modern apartment in a sought-after location. Contact Vivo Realty today for more information and to schedule a viewing.



Floor plans



Additional information

Facilities

Aircondition, Central system

Heating, Underfloor

Parking, Covered

Solar water heater

Storage

Features

Balcony, front

Bath

Bathroom underfloor heating

Bright

CCTV

Double glazing

Easy access to highway

Easy access to main roads

En suite shower

Entrance gate, automated

Fitted wardrobes

High ceilings

Investment opportunity

Laminate flooring

Luxury specifications

Modern design

Near amenities

Parquet flooring

Rental potential

Shower

Veranda

Walk-in closet

Contact us



Roula J. Andreou

 (+357) 96650308

 rjalim1@vivorealty.com.cy

