

2182129

NEW 2 BEDROOM APARTMENT IN PANTHEA!

 Panthea, Limassol

€450,000 +VAT





Overview

Specifications

Bedrooms

 2

Bathrooms

 2

Covered

 91.7 m²

| | |
|------|-----------|
| Type | Apartment |
|------|-----------|

| | |
|---------|---|
| Showers | 1 |
|---------|---|

| | |
|---------|---|
| Toilets | 2 |
|---------|---|

| | |
|--------|--------------------|
| Status | Under construction |
|--------|--------------------|

| | |
|----------------------|------|
| Year of construction | 2025 |
|----------------------|------|

Description

For sale: a modern apartment under construction in the desirable area of Panthea. This stylish, well-designed home offers 91.7 m2 of internal space, featuring two spacious bedrooms and two contemporary bathrooms. Situated on the second floor of a three-story building, this apartment is set to be completed in 2026, making it a perfect opportunity for those seeking a brand-new living experience.

Panthea is known for its charming neighborhoods and vibrant atmosphere. The area boasts beautiful views, with easy access to parks and recreational facilities. Residents enjoy the convenience of nearby amenities, including shops, restaurants, and schools, all just a short distance away. Furthermore, its close proximity to the highway ensures effortless travel to surrounding areas.

This apartment is designed for comfort and efficiency, featuring a central AC system and underfloor heating, providing a cozy environment year-round.

Don't miss out on this opportunity to own a modern apartment in a sought-after location. Contact Vivo Realty today for more information and to schedule a viewing.



Floor plans

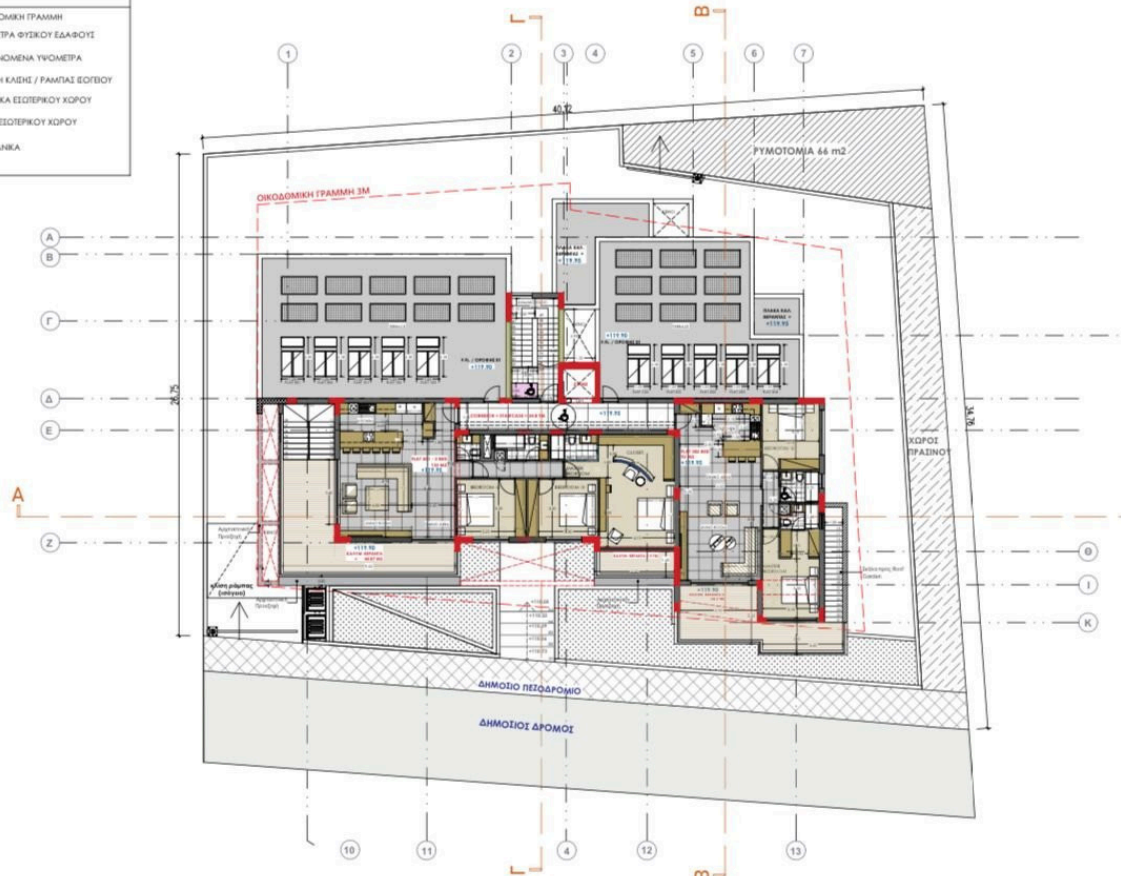
NOTES / ΥΠΟΜΝΗΜΑ

- ΟΙΚΟΔΟΜΙΚΗ ΓΡΑΜΜΗ
- ΥΨΟΜΕΤΡΑ ΦΥΣΙΚΟΥ ΕΔΑΦΟΥΣ
- ΠΡΟΤΕΙΝΟΜΕΝΑ ΥΨΟΜΕΤΡΑ
- ΕΝΔΕΙΞΗ ΚΑΔΕΣ / ΡΑΜΠΑΣ ΣΟΦΕΥΟΥ
- ΚΕΡΑΜΙΚΑ ΕΣΩΤΕΡΙΚΟΥ ΧΩΡΟΥ
- ΠΑΡΚΕ ΕΣΩΤΕΡΙΚΟΥ ΧΩΡΟΥ
- ΠΕΛΔΑΚΑΝΙΚΑ



NOTES / ΥΠΟΜΝΗΜΑ

- ΟΙΚΟΔΟΜΙΚΗ ΓΡΑΜΜΗ
- ΥΨΟΜΕΤΡΑ ΦΥΣΙΚΟΥ ΕΔΑΦΟΥΣ
- ΠΡΟΤΕΙΝΟΜΕΝΑ ΥΨΟΜΕΤΡΑ
- ΕΝΔΕΙΞΗ ΚΑΔΕΣ / ΡΑΜΠΑΣ ΣΟΦΕΥΟΥ
- ΚΕΡΑΜΙΚΑ ΕΣΩΤΕΡΙΚΟΥ ΧΩΡΟΥ
- ΠΑΡΚΕ ΕΣΩΤΕΡΙΚΟΥ ΧΩΡΟΥ
- ΠΕΛΔΑΚΑΝΙΚΑ



Additional information

Facilities

Aircondition, Central system

Solar water heater

Heating, Underfloor

Storage

Parking, Covered

Features

Balcony, front

Bright

Easy access to highway

Entrance gate, automated

Investment opportunity

Modern design

Rental potential

Walk-in closet

Bath

CCTV

Easy access to main roads

Fitted wardrobes

Laminate flooring

Near amenities

Shower

Bathroom underfloor heating

Double glazing

En suite shower

High ceilings

Luxury specifications

Parquet flooring

Veranda

Contact us



Roula J. Andreou

 (+357) 96650308

 rjalim1@vivorealty.com.cy

