

2182030

# NEW DETACHED HOUSE OF 4 BEDROOMS IN LAIKI LEFKOTHEA!

📍 Agia Fyla- Laiki Lefkothea, Limassol

**€790,000** +VAT







# Overview

## Specifications

Bedrooms

 4


Bathrooms

 1

Covered

 260 m<sup>2</sup>

|         |                          |
|---------|--------------------------|
| Type    | <b>Detached Villa</b>    |
| Showers | <b>3</b>                 |
| Toilets | <b>4</b>                 |
| Plot    | <b>364 m<sup>2</sup></b> |

|                          |   |
|--------------------------|---|
| Status                   | <b>Under construction</b>   |
| Year of construction     | <b>2024</b>   |
| Structure                | <b>Concrete</b>   |
| Energy efficiency rating |  <b>A+</b> |

## Description

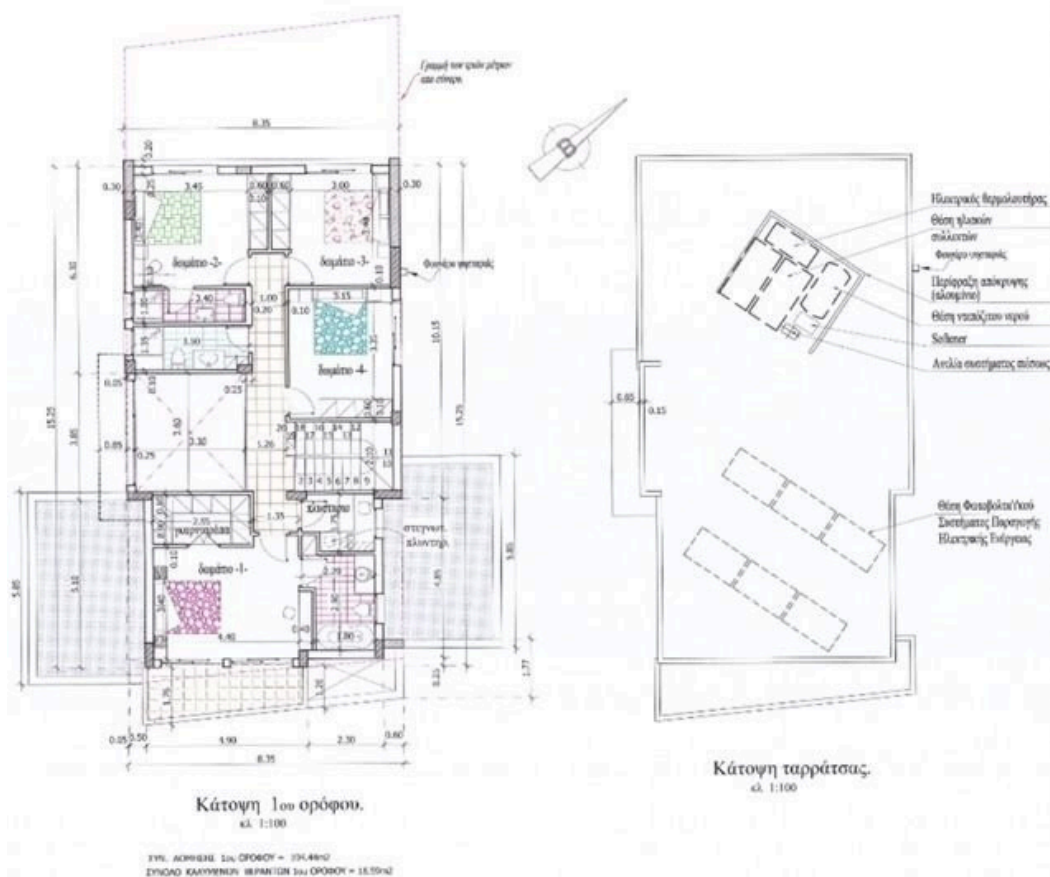
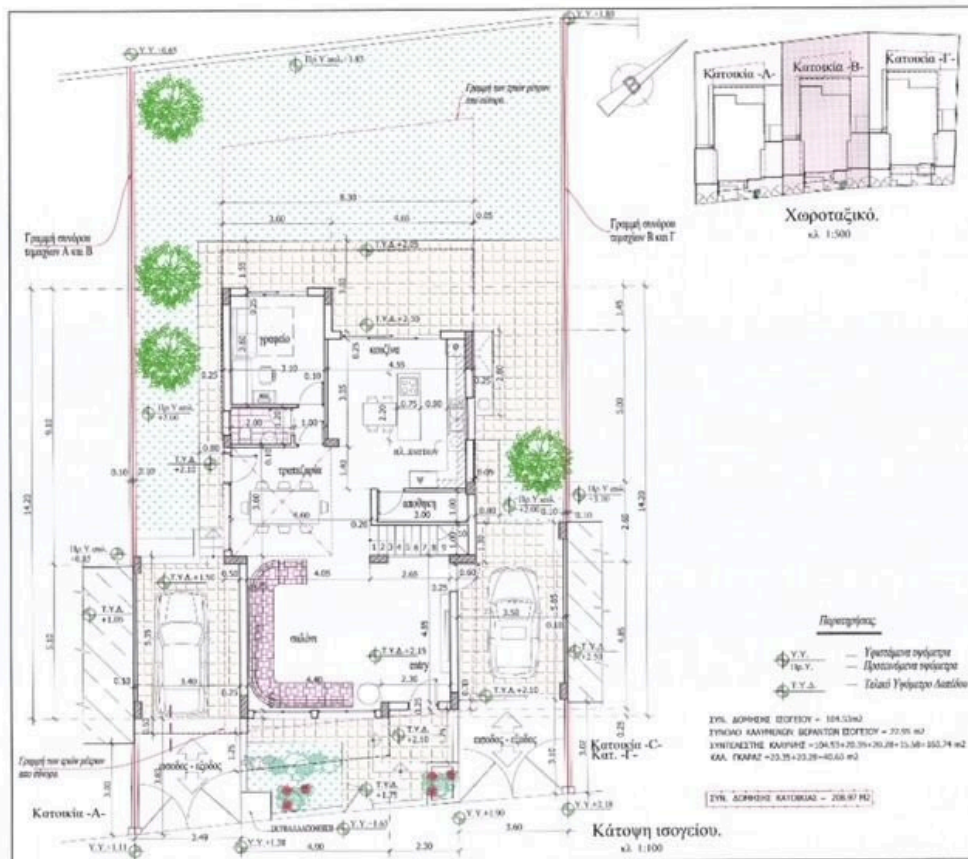
Detached house in two levels, in the sought-after area of Agia Fyla- Laiki Lefkothea, overlooking the city. With an internal space of 260m2, in a plot of 364m2 this spacious home features 4 comfortable bedrooms, 3 bedrooms on upper level and one on the ground level. Perfect for families or those seeking extra room for guests, this property promises an ideal layout.

Agia Fyla- Laiki Lefkothea is known for its serene atmosphere and proximity to essential amenities. Residents can enjoy easy access to shops, restaurants, close to local & private schools, making it a convenient choice for everyday living. Additionally, the area boasts stunning city and mountain views, providing a picturesque backdrop for your new home.

Don't miss the opportunity to invest in this exceptional property, advertised by Vivo Realty. Contact us today for more details.



# Floor plans



# Additional information

## Facilities

Aircondition, Provision

Pool, Optional

Storage

Heating, Provision

Solar photovoltaic panels  
(provision)

Parking, Covered

Solar water heater

## Features

Balcony, front

Double glazing

En suite shower

Garden

High ceilings

Kitchen island

Marble stairs

Near amenities

Quiet area

Bright

Easy access to highway

Energy efficient doors/windows

Guest WC

Internal stairs

Laminate flooring

Modern design

Parquet flooring

Rental potential

Combined kitchen and dining area

Easy access to main roads

Fitted wardrobes

Guestroom

Investment opportunity

Luxury specifications

Mountain view

Pipe-in-pipe plumbing system

Veranda

## Contact us



**Roula J. Andreou**

 (+357) 96650308

 rjalim1@vivorealty.com.cy

