

2182022

SPACIOUS 2 BEDROOM TOP FLOOR APARTMENT WITH ROOF GARDEN IN COLUMBIA AREA!

 Columbia Area, Limassol

€675,000 +VAT





Where Comfort and Quality Meet

The interiors of each residence are designed with special care and attention and fitted throughout with premium quality materials and finishes, uncompromising in both excellence and style, and promising residents a lifestyle of unparalleled world-class elegance.



Overview

Specifications

Bedrooms

 2


Bathrooms

 1

Covered

 106 m²

Type	Apartment
Showers	1
Toilets	2

Status	Under construction
Year of construction	2025
Energy efficiency rating	 A+

Description

A modern top floor apartment that is currently under construction, designed for comfortable living. Located in the desirable Columbia Area, this property is set to be finished in 2026.

This apartment boasts an energy efficiency rating of A+, ensuring lower utility bills and a smaller carbon footprint. The underfloor heating adds a touch of luxury and comfort, providing warmth all year round.

Columbia Area is well-known for its vibrant community and convenient access to amenities. You will find everything you need nearby, from shops and restaurants to parks and recreational facilities. Additionally, the location offers easy access to the highway, allowing for quick travel to other areas.

Don't miss this opportunity to own a modern apartment in one of the most sought-after neighborhoods. For more information, please contact Vivo Realty, who is excited to assist you in making this beautiful apartment your new home.

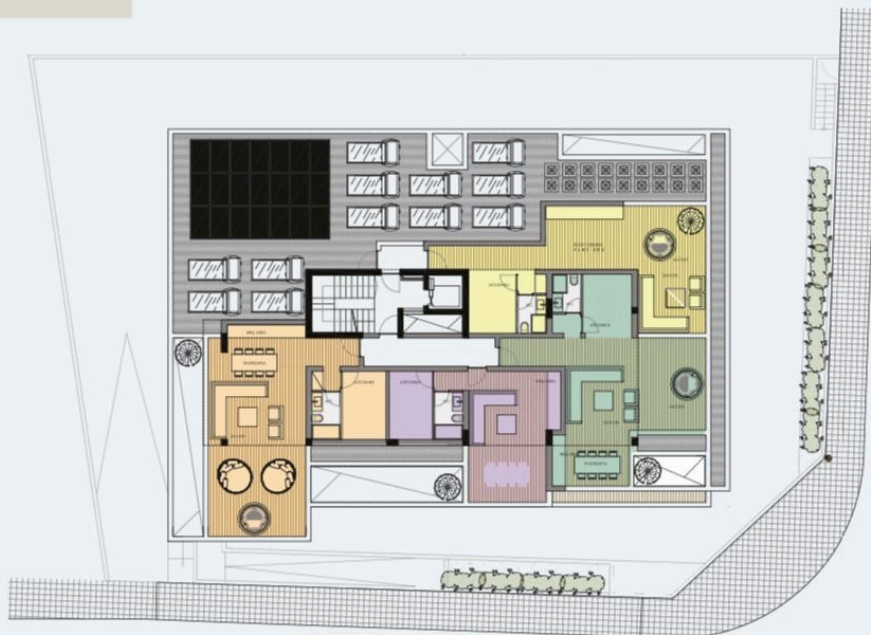


Floor plans

3st Floor



Roof Garden



Additional information

Facilities

Aircondition, Provision

Solar photovoltaic panels
(provision)

Heating, Underfloor

Solar water heater

Parking, Covered

Storage

Features

Balcony, front

Combined kitchen and dining
area

Easy access to highway

Energy efficient doors/windows

Investment opportunity

Luxury specifications

Near bus route

Roof garden

Bathroom underfloor heating

Connected to electric mains

Easy access to main roads

Fitted wardrobes

Kitchen island

Modern design

Parquet flooring

Spacious rooms

Bright

Double glazing

En suite shower

Guest WC

Laminate flooring

Near amenities

Rental potential

Veranda, large

Contact us



Roula J. Andreou

 (+357) 96650308

 rjalim1@vivorealty.com.cy

