

2182015

NEW 3 BEDROOM APARTMENT IN COLUMBIA AREA IN LIMASSOL!

 Columbia Area, Limassol

€651,000 +VAT





Overview

Specifications

Bedrooms		Bathrooms		Covered	
 3		 1		 119 m ²	
Type		Apartment			
Showers		1			
Toilets		3			
Status		Under construction			
Year of construction		2025			
Energy efficiency rating		 A+			

Description

For sale is a modern apartment that is currently under construction, designed for comfortable living. Located in the desirable Columbia Area, this property is set to be finished in 2026.

This apartment boasts an energy efficiency rating of A+, ensuring lower utility bills and a smaller carbon footprint. The underfloor heating adds a touch of luxury and comfort, providing warmth all year round.

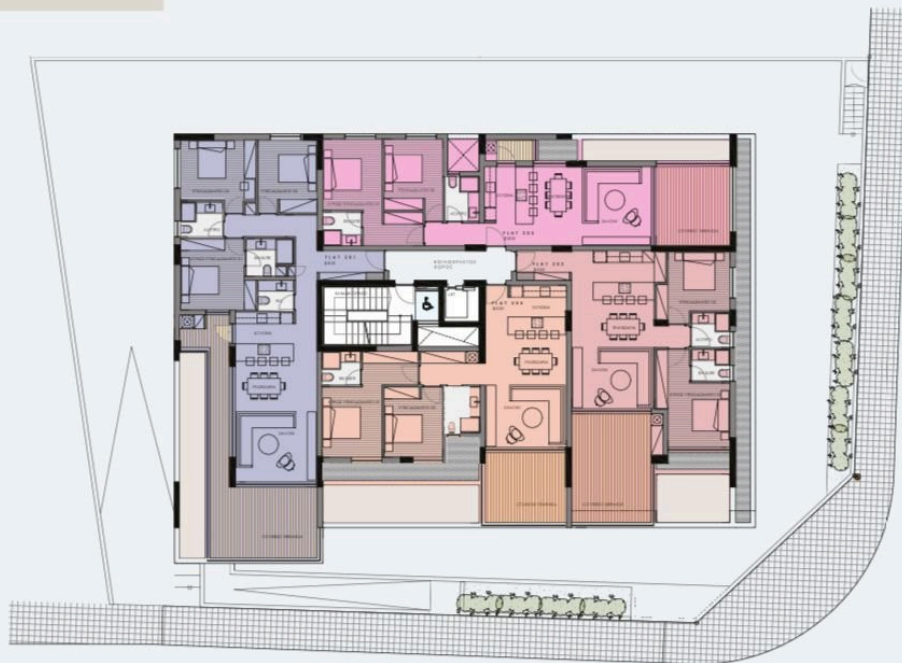
Columbia Area is well-known for its vibrant community and convenient access to amenities. You will find everything you need nearby, from shops and restaurants to parks and recreational facilities. Additionally, the location offers easy access to the highway, allowing for quick travel to other areas.

Don't miss this opportunity to own a modern apartment in one of the most sought-after neighborhoods. For more information, please contact Vivo Realty, who is excited to assist you in making this beautiful apartment your new home.

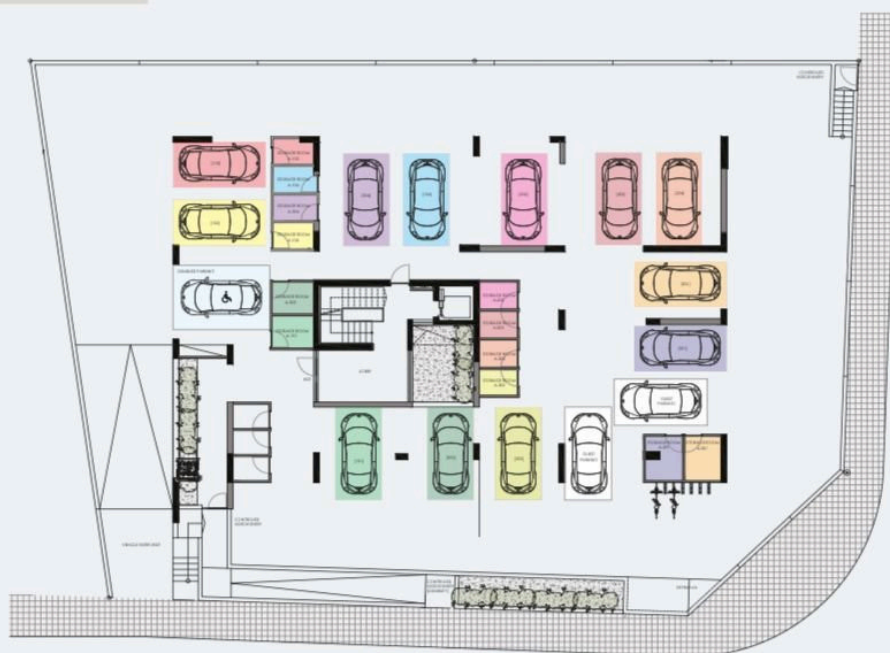


Floor plans

2st Floor



GROUND FLOOR



Additional information

Facilities

Aircondition, Provision

Heating, Underfloor

Parking, Covered

Solar photovoltaic panels
(provision)

Solar water heater

Storage

Features

Balcony, front

Bathroom underfloor heating

Bright

Combined kitchen and dining
area

Connected to electric mains

Double glazing

Easy access to highway

Easy access to main roads

En suite shower

Energy efficient doors/windows

Fitted wardrobes

Guest WC

Investment opportunity

Kitchen island

Laminate flooring

Luxury specifications

Modern design

Near amenities

Near bus route

Parquet flooring

Spacious rooms

Veranda, large

Contact us



Roula J. Andreou

 (+357) 96650308

 rjalim1@vivorealty.com.cy

