

2181862

# NEW TWO BEDROOM APARTMENT IN EKALI AREA

 Ekali, Limassol

**€330,000** +VAT





# Overview

## Specifications

Bedrooms

 2

Bathrooms

 1

Covered

 78.4 m<sup>2</sup>

Type **Apartment**

Toilets **2**

Status **Under construction**

Year of construction **2024**

Energy efficiency rating  **A**

## Description

This modern apartment, currently under construction, offers an ideal living space in the desirable area of Ekali. With an internal area of 78.4 m<sup>2</sup>, the apartment features two spacious bedrooms, open plan kitchen, living/dining area. Situated on the second floor of a three-story building, this unit promises comfort and convenience for its future residents.

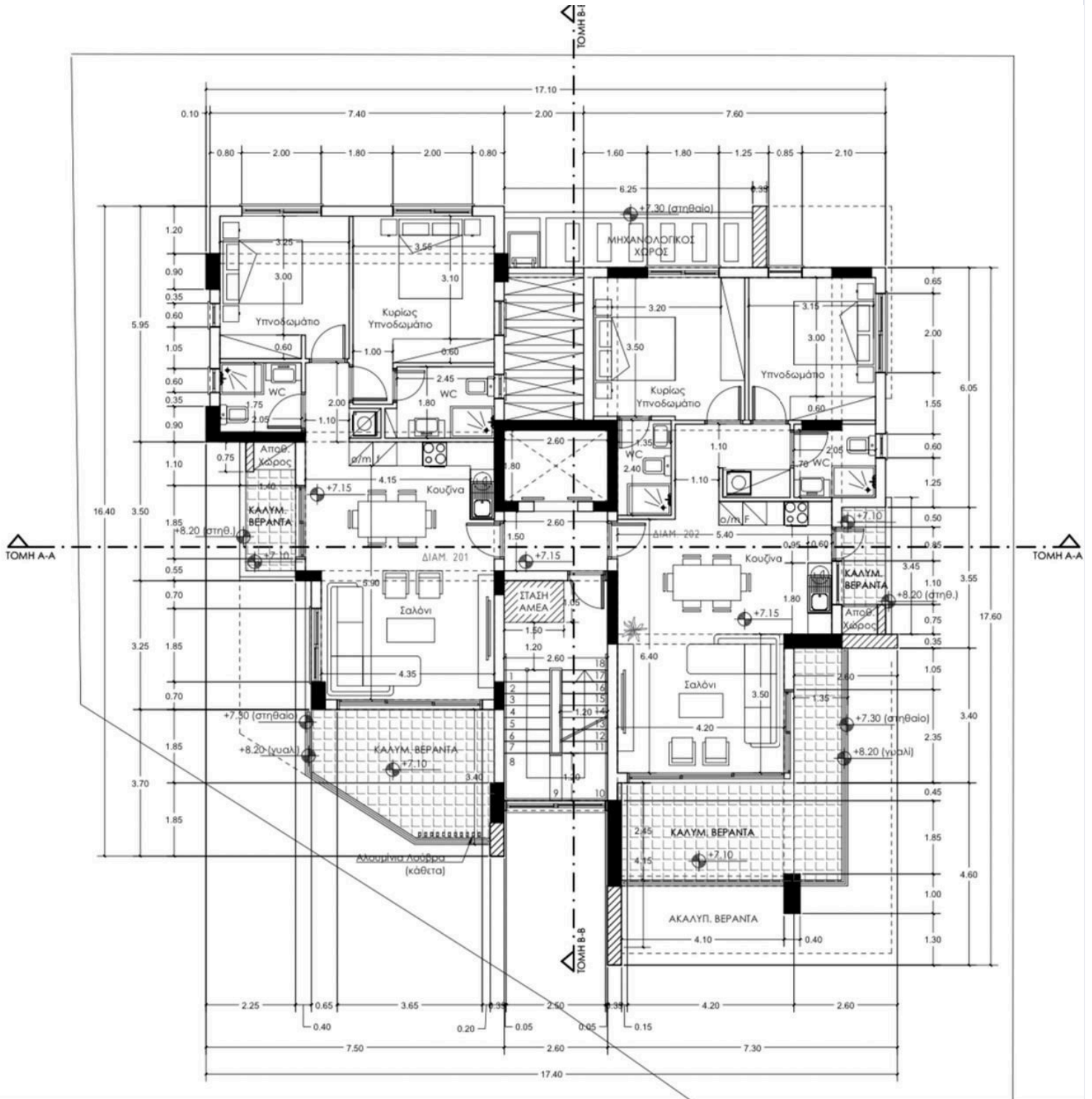
Ekali is known for its serene environment and attractive neighborhoods. The area boasts easy access to the highway, ensuring quick connections to nearby cities and attractions. Residents will also find a range of amenities within walking distance, including shops, cafes, and parks, making it a perfect location for families and professionals alike.

This stylish apartment is designed with energy efficiency in mind, boasting an impressive energy rating of A. Scheduled for completion end of 2025, it showcases modern architecture and thoughtful design, ensuring it meets the needs of today's homeowners.

Don't miss out on this unique opportunity to own a brand new apartment in Ekali. Advertised by Vivo Realty, we are here to assist you every step of the way in your home-buying journey.



# Floor plans



# Additional information

## Facilities

Aircondition, Split system

Heating, Provision

Parking, Covered

Solar water heater

Storage

## Features

Balcony, front

Bright

Combined kitchen and dining area

Double glazing

Easy access to highway

Easy access to main roads

En suite shower

Fitted wardrobes

Guest WC

Investment opportunity

Luxury specifications

Modern design

Near amenities

Quiet area

Spacious rooms

## Contact us



**Roula J. Andreou**

 (+357) 96650308

 rjalim1@vivorealty.com.cy

