

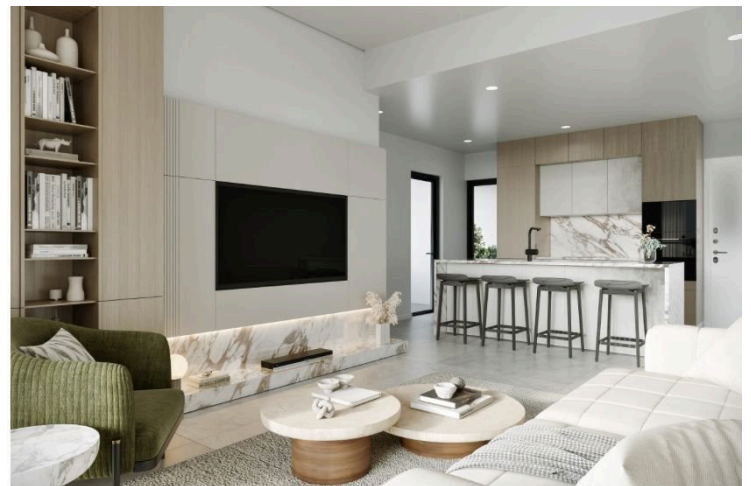
2181696

# NEW 2-BEDROOM APARTMENT IN COLUMBIA AREA!

 Columbia Area, Limassol

**€390,000** +VAT





# Overview

## Specifications

Bedrooms

 2


Bathrooms

 1

Covered

 110 m<sup>2</sup>

Type	<b>Apartment</b>
Showers	<b>1</b>
Toilets	<b>3</b>
Status	<b>Under construction</b>
Year of construction	<b>2024</b>

Furnished	<b>Unfurnished</b>
Structure	<b>Concrete</b>
Facade	<b>Brick</b>
Energy efficiency rating	 <b>A</b>

## Description

For sale a modern apartment located in the desirable Columbia Area. This property, currently under construction and set to be completed in 2025, offers a spacious total area of 110 m<sup>2</sup>. Located on the second floor of a three-story building, the apartment is easily accessible via an elevator.

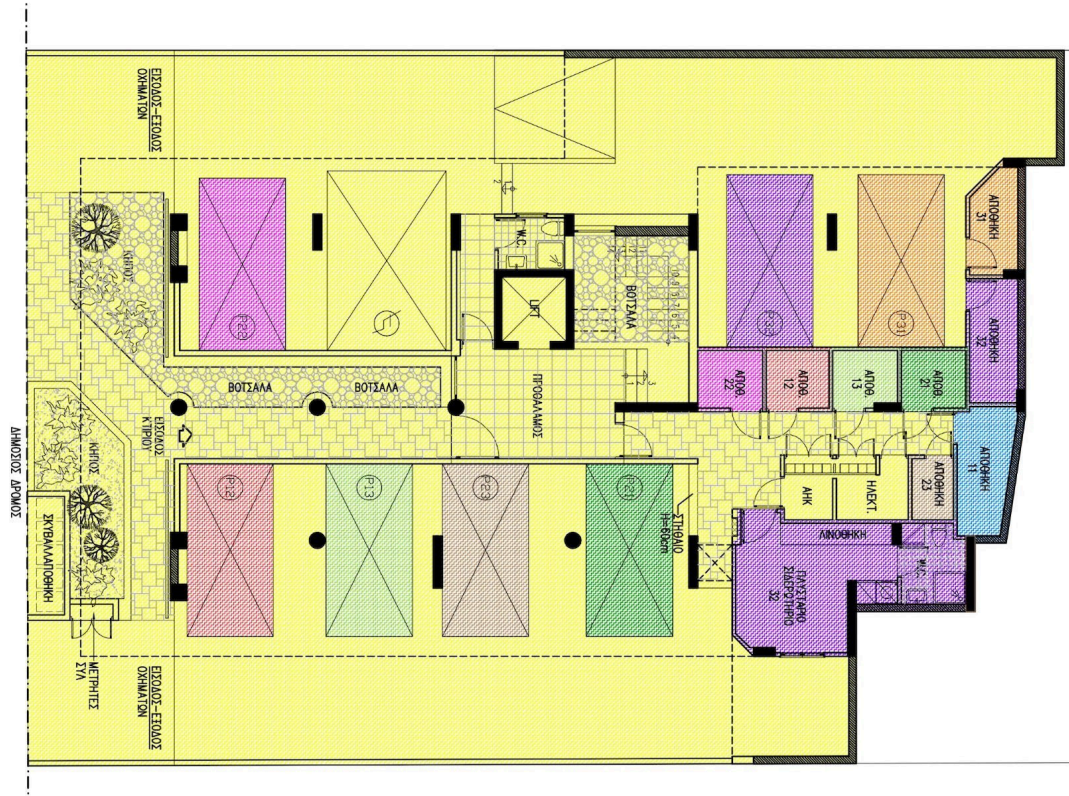
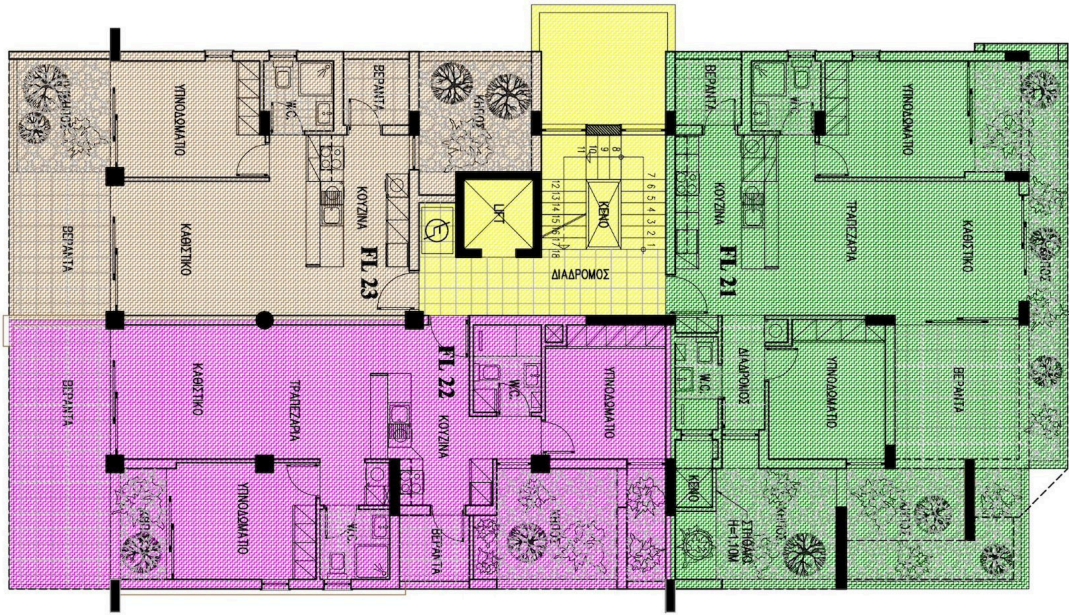
Inside, you will find two well-sized bedrooms and a stylish bathroom, designed for comfort and functionality. The apartment features underfloor heating, providing warmth and coziness during the cooler months. With its energy efficiency rating of A, you can enjoy lower utility bills while maintaining a sustainable lifestyle.

The Columbia Area is known for its vibrant community and convenient access to a variety of amenities, including shops, restaurants, and parks. The proximity to the highway makes commuting and traveling hassle-free, ensuring that you are well-connected to the surrounding regions.

Don't miss out on this opportunity to own a modern apartment in a prime location. Contact Vivo Realty today to find out more about this exciting property and to schedule a viewing.



# Floor plans



# Additional information

## Facilities

Aircondition, Provision

Parking, Covered

Elevator

Solar water heater

Heating, Underfloor

Storage

## Features

Alarm system, provision

Combined kitchen and dining area

Easy access to main roads

High ceilings

Laminate flooring

Near amenities

Quiet area

Veranda, front

Bright

Double glazing

En suite shower

Investment opportunity

Luxury specifications

Near bus route

Shower

CCTV, provision

Easy access to highway

Guest WC

Kitchen island

Marble flooring

Open plan

Spacious rooms

## Distances

Airport



50 km

Sea




1 km

## Contact us



**Roula J. Andreou**

 (+357) 96650308

 rjalim1@vivorealty.com.cy

