

2181695

NEW 5-BEDROOM APARTMENT + STUDIO IN COLUMBIA AREA!

 Columbia Area, Limassol

€1,500,000 +VAT





Overview

Specifications

Bedrooms

 6


Bathrooms

 2

Covered

 292 m²

Type	Apartment
Showers	3
Toilets	5
Status	Under construction
Year of construction	2024

Furnished	Unfurnished
Structure	Concrete
Facade	Brick
Energy efficiency rating	 A

Description

Discover your future home in this impressive, modern apartment currently under construction in the desirable Columbia Area. Spanning an expansive 292m2, this ground-floor residence features 5 spacious bedrooms + studio providing ample space for families or those who enjoy hosting guests.

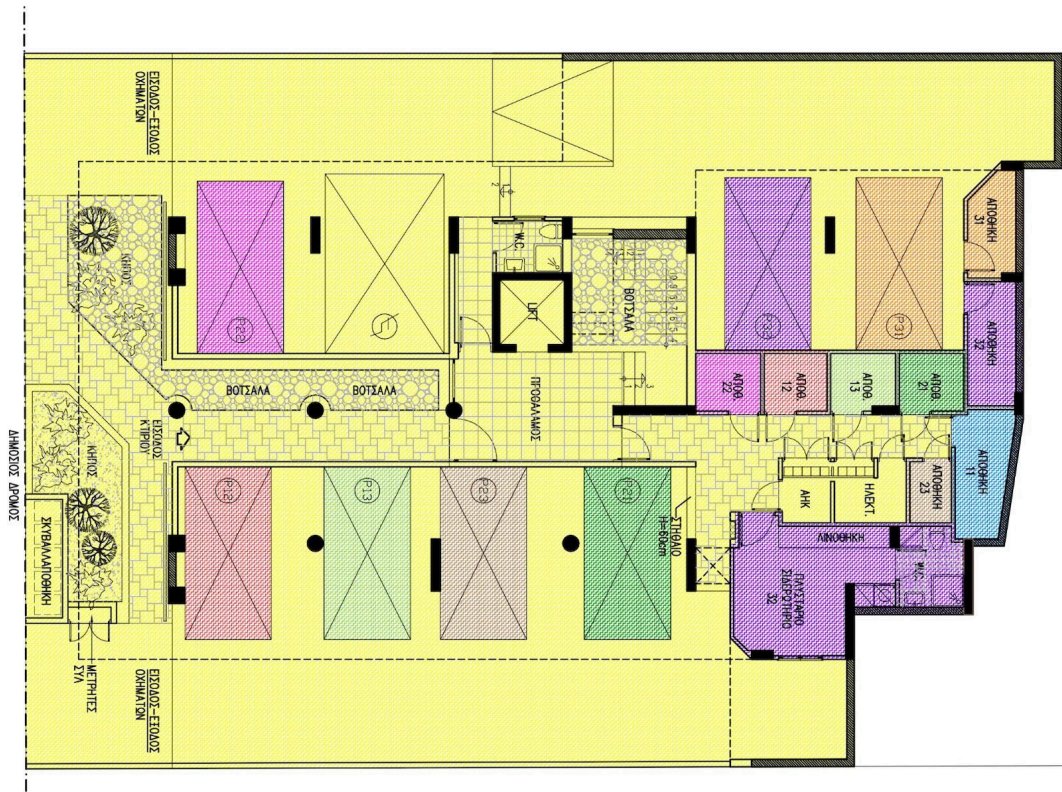
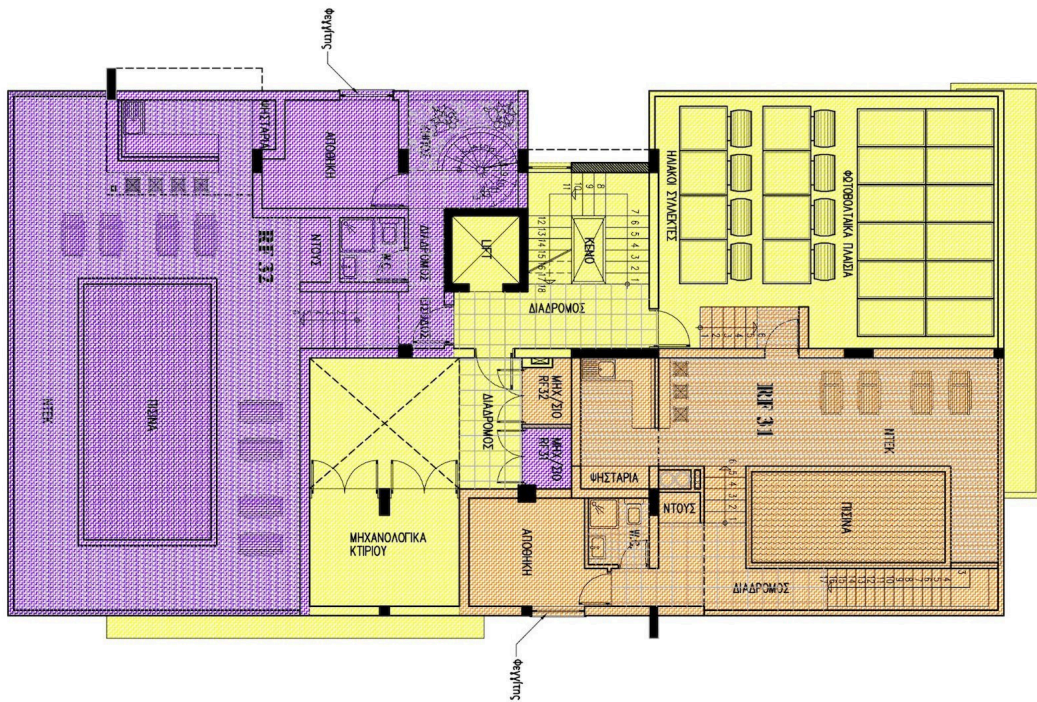
The apartment boasts energy-efficient A-rated features and advanced underfloor heating to ensure your comfort throughout the year. The building is equipped with an elevator, making mobility effortless and convenient.

Columbia Area is known for its vibrant community and excellent amenities. Residents can enjoy easy access to shops, restaurants, and recreational options, all within a short walking distance. The prime location also provides quick connections to the highway, making commuting and exploring the surrounding areas a breeze.

Scheduled for completion in 2025, this modern apartment is an exceptional opportunity for anyone looking to enjoy contemporary living in a thriving neighborhood. Don't miss out on the chance to call this stunning apartment your home. For more information, contact Vivo Realty today.



Floor plans



Additional information

Facilities

Aircondition, Provision

Parking, Covered

Elevator

Solar water heater

Heating, Underfloor

Storage

Features

Alarm system (provision)

Combined kitchen and dining area

Easy access to main roads

High ceilings

Laminate flooring

Near amenities

Quiet area

Spacious rooms

Bright

Double glazing

En suite shower

Investment opportunity

Luxury specifications

Near bus route

Rental potential

Veranda, front

CCTV (provision)

Easy access to highway

Guest WC

Kitchen island

Marble flooring

Open plan

Shower

Distances

Airport



50 km

Sea



1 km

Contact us



Roula J. Andreou

 (+357) 96650308

 rjalim1@vivorealty.com.cy

