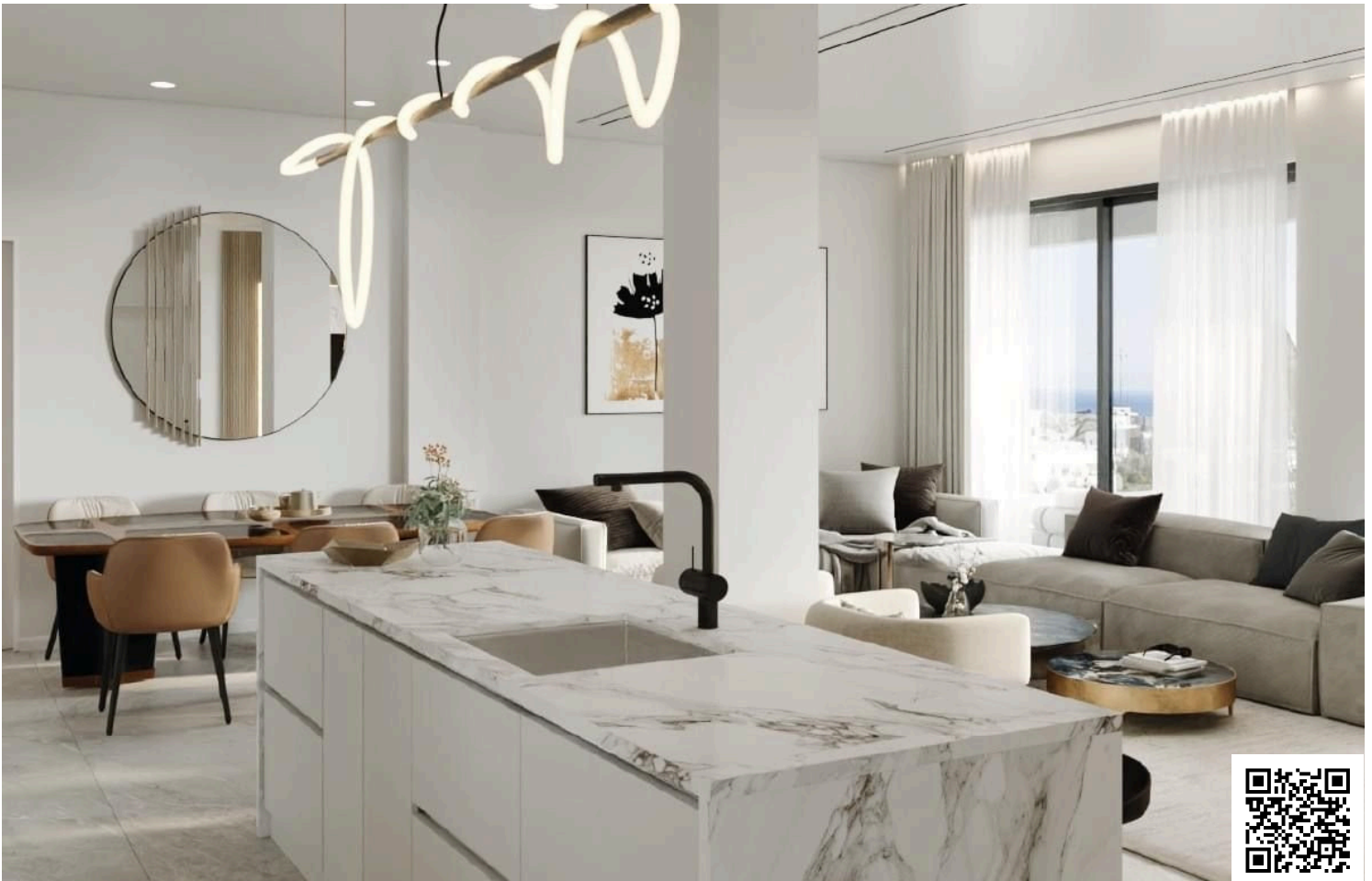


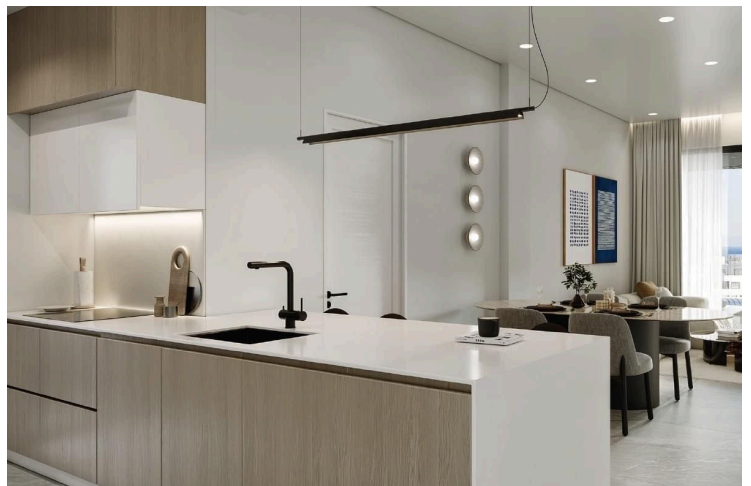
2181693

# NEW 3-BEDROOM APARTMENT IN COLUMBIA AREA!

 Columbia Area, Limassol

**€525,000** +VAT





# Overview

## Specifications

Bedrooms

 3


Bathrooms

 1

Covered

 85 m<sup>2</sup>

Type	<b>Apartment</b>
Showers	<b>1</b>
Toilets	<b>3</b>
Status	<b>Under construction</b>

Year of construction	<b>2024</b>
Structure	<b>Concrete</b>
Facade	<b>Brick</b>
Energy efficiency rating	 <b>A</b>

## Description

For sale: a modern apartment currently under construction, offering a spacious internal area of 85 m<sup>2</sup>. This well-designed residence features three bedrooms and one bathroom, perfect for families or those seeking extra space. Situated on the first floor of a three-story building, the apartment is accessible via an elevator, ensuring convenience for all residents.

Located in the vibrant Columbia Area, this property is surrounded by a lively community atmosphere. The area boasts a range of amenities, including shops, restaurants, and parks, all within walking distance. Additionally, it provides easy access to the highway, making commuting a breeze.

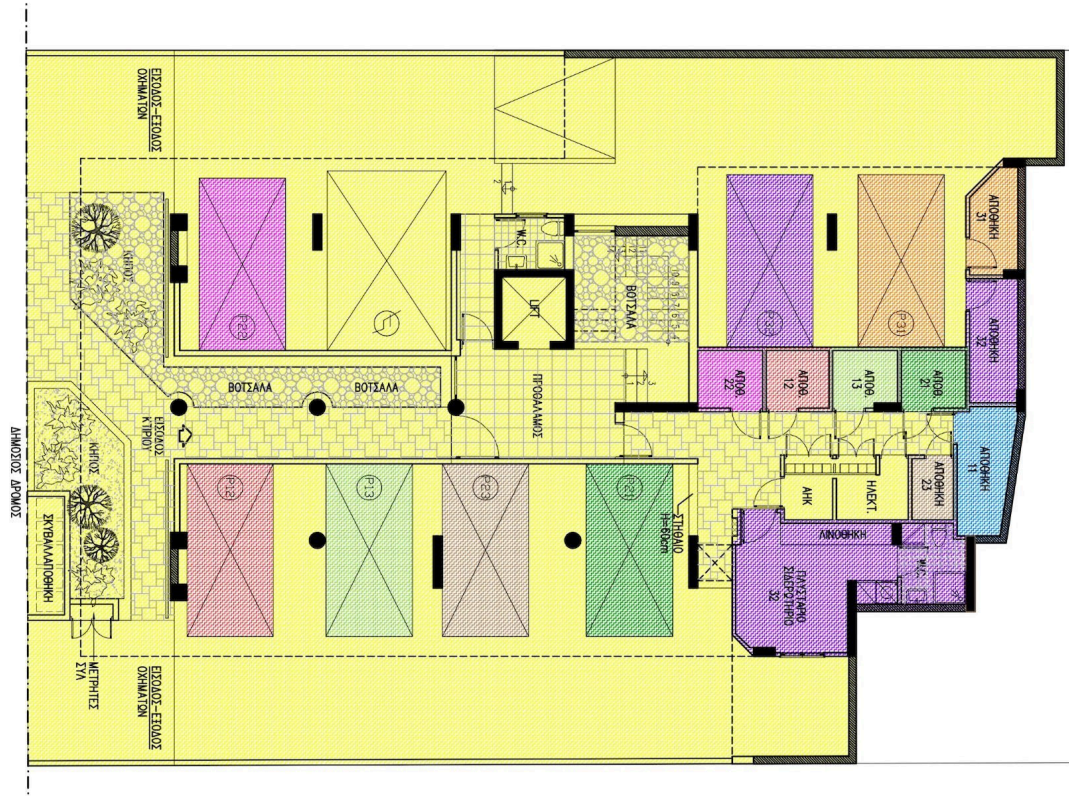
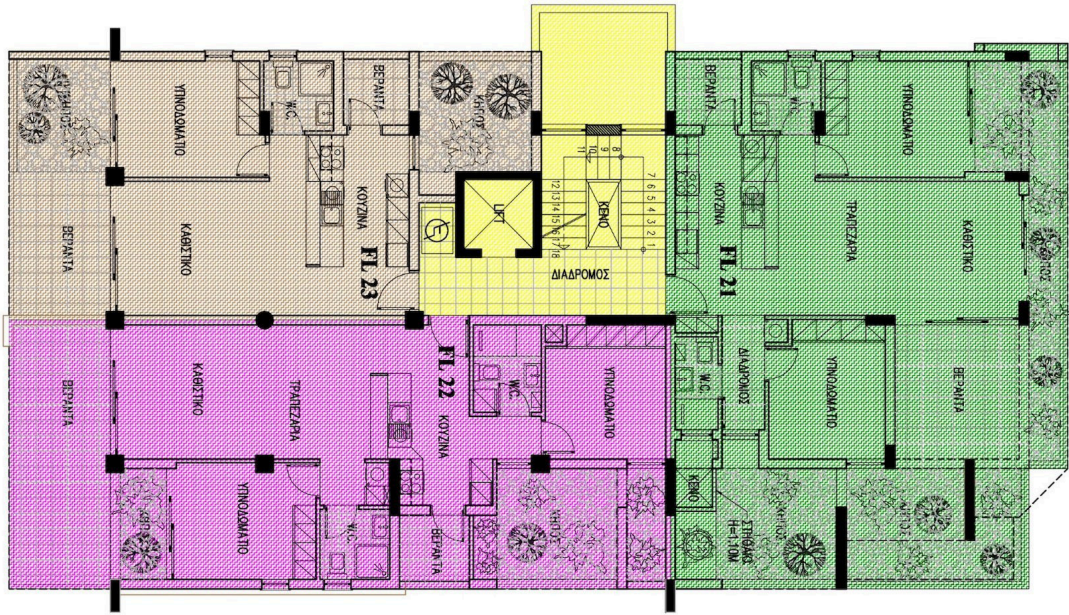
The apartment is built with energy efficiency in mind, earning an A rating. Modern features include underfloor heating, adding to the comfort and luxury of this home. Scheduled for completion in 2024, this apartment is a fantastic opportunity for those looking to invest in a new property in a sought-after location.

Experience the best of modern living in the Columbia Area. For more information, contact Vivo Realty today to learn more about this exciting opportunity.





# Floor plans



# Additional information

## Facilities

Aircondition, Provision

Elevator

Heating, Underfloor

Parking, Covered

Solar water heater

Storage

## Features

Alarm system, provision

Bright

CCTV, provision

Combined kitchen and dining area

Double glazing

Easy access to highway

Easy access to main roads

En suite shower

Guest WC

High ceilings

Investment opportunity

Kitchen island

Laminate flooring

Luxury specifications

Marble flooring

Near amenities

Near bus route

Open plan

Quiet area

Rental potential

Shower

Spacious rooms

Veranda, front

## Contact us



**Roula J. Andreou**

 (+357) 96650308

 rjalim1@vivorealty.com.cy

