

2181627

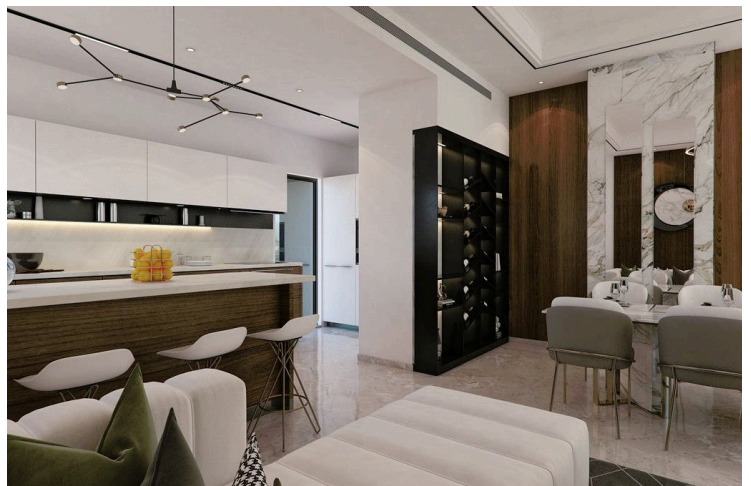
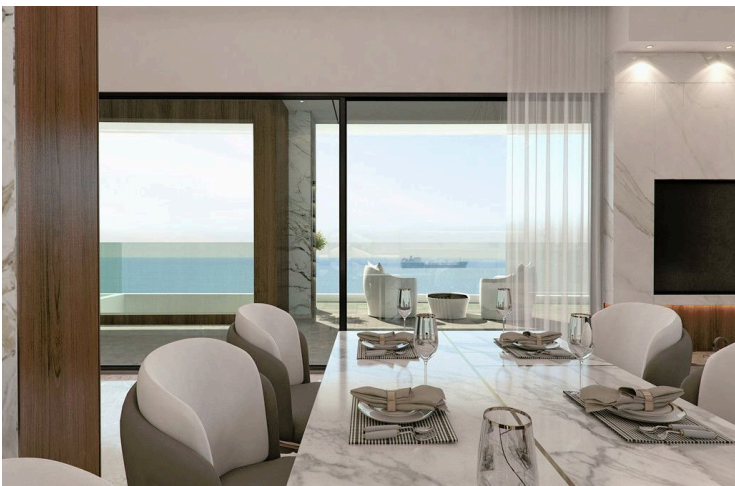
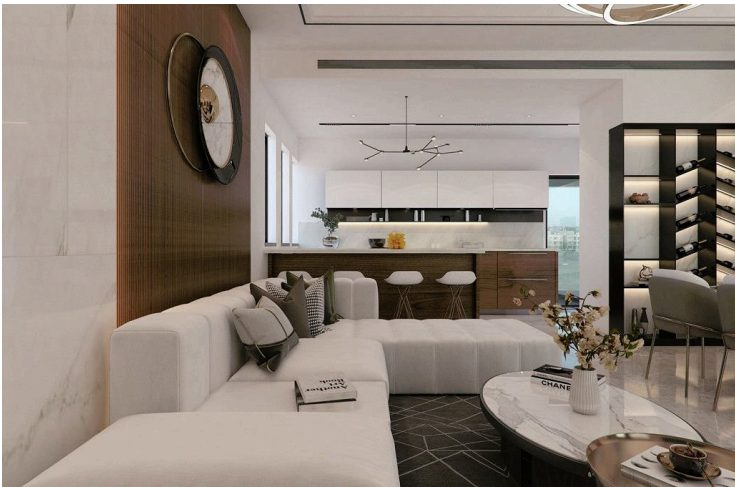
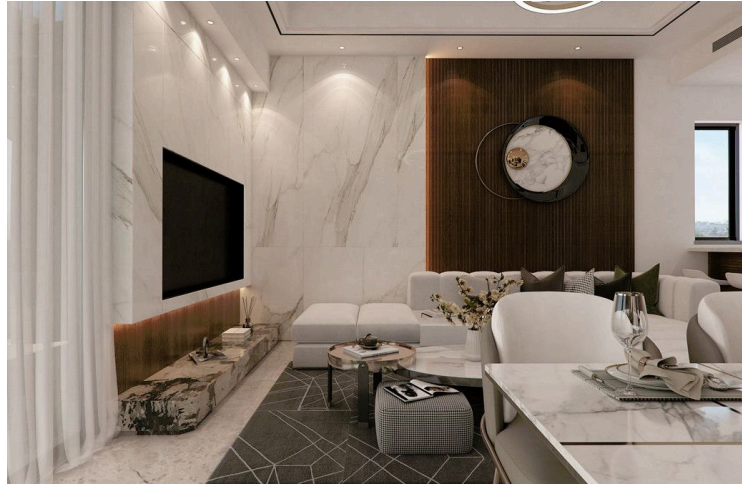
# TWO BEDROOM APARTMENT WITH BREATHTAKING SEA VIEWS IN NEAPOLIS AREA!

 Neapolis, Limassol

**€695,000** +VAT







# Overview

## Specifications

Bedrooms

 2

Bathrooms

 2

Covered

 95 m<sup>2</sup>

Type **Apartment**

Toilets **2**

Status **Under construction**

Year of construction **2024**

Furnished **Unfurnished**

Energy efficiency rating  **A**

## Description

This exquisite building boasts an enviable proximity to the city's most popular beach bars, premier supermarkets, fine dining establishments, and the stunning blue flag beaches, all within walking distance. This building offers six elegantly designed 2-bedroom apartments and a spacious 3-bedroom penthouse, each featuring balconies with breathtaking sea views. The building's facade seamlessly blends elegance and comfort, with white stone embellishments harmoniously balancing the deep grey wall cladding, elevating the standard of urban living in Limassol.

For more info contact us!





# Additional information

## Facilities

Aircondition, Split system

Heating, Central, independent

Parking, Covered

Solar water heater

Storage

## Features

Balcony, front

Bright

City view

Combined kitchen and dining area

Connected to electric mains

Double glazing

Easy access to highway

Easy access to main roads

Guest WC

Investment opportunity

Luxury specifications

Near amenities

Near bus route

Rental potential

Veranda, front

Walking distance to beach

## Contact us



**Roula J. Andreou**

 (+357) 96650308

 rjalim1@vivorealty.com.cy

