

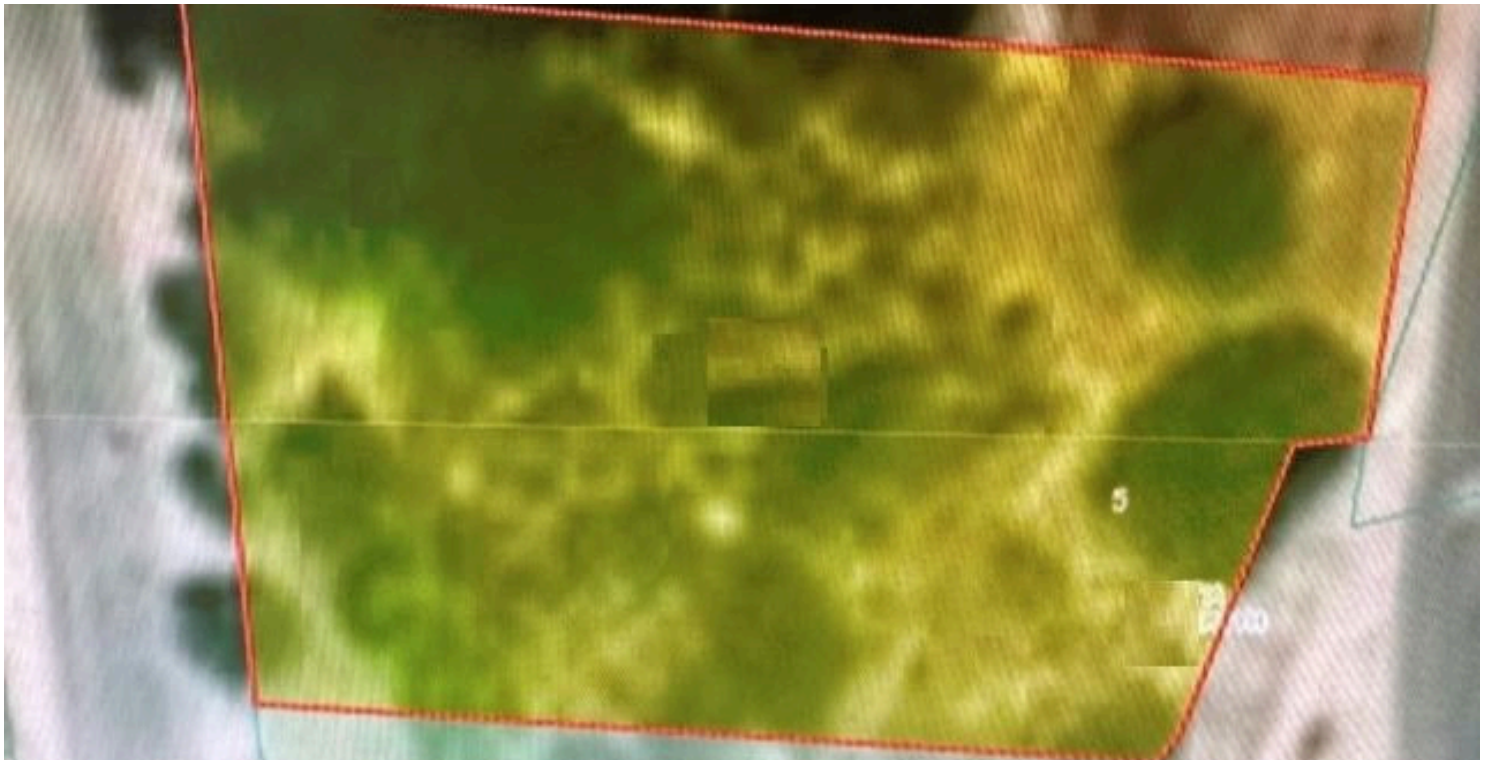
2181374

# RESIDENTIAL PLOT OF 1320m<sup>2</sup> IN PANIOTIS AREA

 Paniotis Hills, Limassol

**€700,000** +VAT ~~€800,000~~





# Overview

## Specifications

Area

 1320 m<sup>2</sup>

Type

**Building Plot**

Title deed

**Yes**

## Description

A residential plot of 1,320m<sup>2</sup> in Paniotis area one of the most prestigious area of Limassol with easy access to the motor way and city center.

Ideal plot to build your family home or the development for more houses!

Density:60% - cover factor: 35% - Floors: 2 - Height: 10

For more info or viewing contact us!



# Additional information

## Features

Connected to electric mains

Easy access to highway

Easy access to main roads

Near amenities

## Contact us



**Roula J. Andreou**

 (+357) 96650308

 rjalim1@vivorealty.com.cy

