



VIVO
REALTY

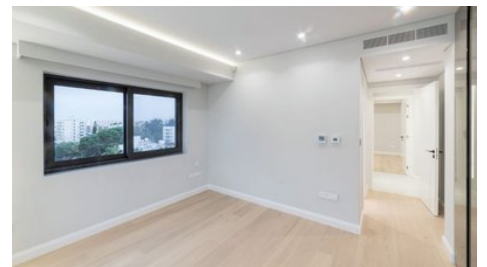
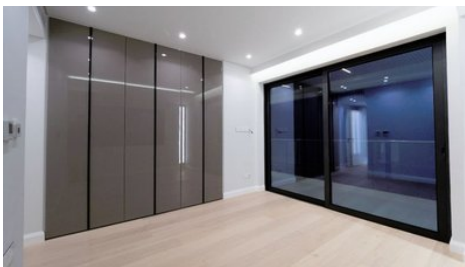
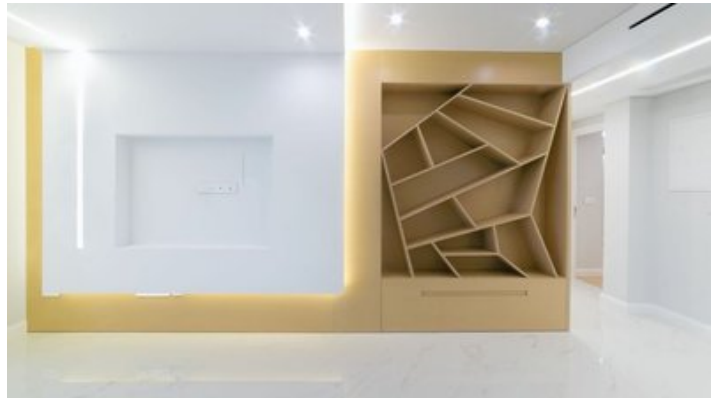
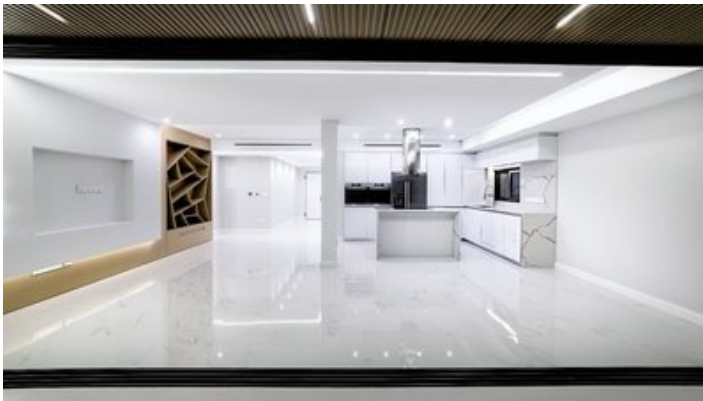


LUXURY APARTMENT 30m FROM THE BEACH - AVAILABLE 1st OF SEPTEMBER 2024

📍 [Limassol, Potamos Germasogeias](#)

2181230





Rent	€4,600 /month	Type	Apartment
Bedrooms	3	Bathrooms	1
Covered	132 m ²	Covered veranda	25 m ²
Status	Used	Area	Limassol, Potamos Germasogeias

Description

Luxury top floor apartment of 3 bedrooms with partial sea view and only 30-meter walking distance to a sandy beach. Situated in the east area of Limassol, close to all amenities and offers both a relaxed and peaceful atmosphere, combined with Limassol's cosmopolitan lifestyle.

The apartment offers bespoke design, crafted with high-end finishing such as marble, granite stones, real wood floors, open plan design kitchen, and living-room. Includes a guest w/c, 1 master bedroom with en-suite bathroom and a large glazed walk-in closet, 2 additional double bedrooms with en-suite bathrooms, and a large outdoor veranda, accessed from the living room area via fully folding glazed doors. Property covered area 157m² - indoor area 132m² - Veranda area 25m² - Gated parking.

AVAILABLE FOR LONG TERM STARTING FROM 1st OF SEPTEMBER 2024

PRICE: Unfurnished 4,600 euro

Fully Furnished for 5.600 euro

Apartment Features:

- Duct Mounted Air Conditioning
 - Under Floor Heating controlled through Wi-Fi
 - Marble Floors
 - Wooden Floors in Bedrooms
 - Integrated Lighting throughout
 - Jacuzzi tub in the bathroom & water jets in the showers.
 - Veranda Integrated Ceiling Fans
 - Walk-in closet
 - Inter graded Wardrobes
 - Fully equipped kitchen with Bosch Electrical Appliances (hob controlled through wi-fi)
 - Wine cooler
 - Granite Kitchen Island
 - Security Door
 - Alarm System
 - Wall-mounted designer mixers
 - Solar Panel for hot water
 - Aluminium Double Glassed Windows:
- Sound Proof
 Energy Efficient
 Mosquito Nets

For more info or to book an appointment for viewing please contact us!



Roula J. Andreou

Marketing Manager & Consultant

✉ rjalim1@vivorealty.com.cy

☎ (+357) 96650308

Facilities

Aircondition, Central system
Parking, Uncovered
Gated complex

Heating, Underfloor
Elevator
Solar water heater

Features

Shower
Easy access to highway
Spacious rooms
Balcony, front
Entrance gate, automated
Fly screens
Bright
Open plan
Parquet flooring
Guest WC
Marble flooring
En suite Shower
Modern design
Walking distance to beach
Near amenities
Kitchen appliances

Easy access to main roads
Combined kitchen and dining area
Connected to electric mains
Fitted wardrobes
Wine cellar
Door screen
Walk-in closet
Alarm system
Double glazing
Veranda, front
En suite Bathroom
Luxury specifications
Sea view
Near bus route
Jacuzzi

Floor plans

