

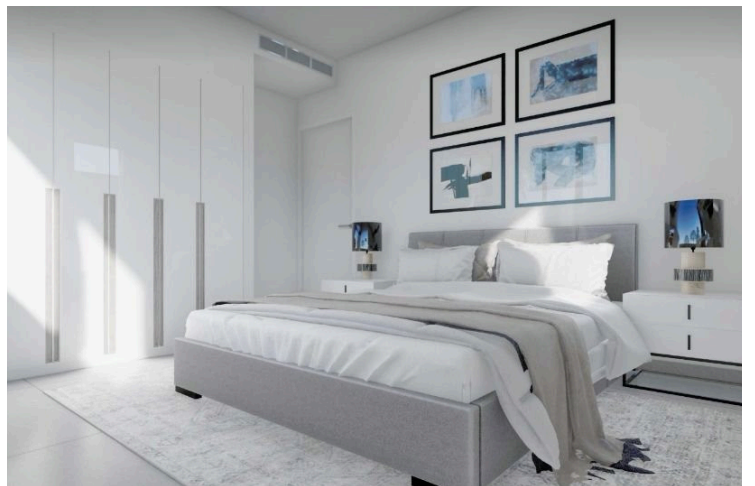
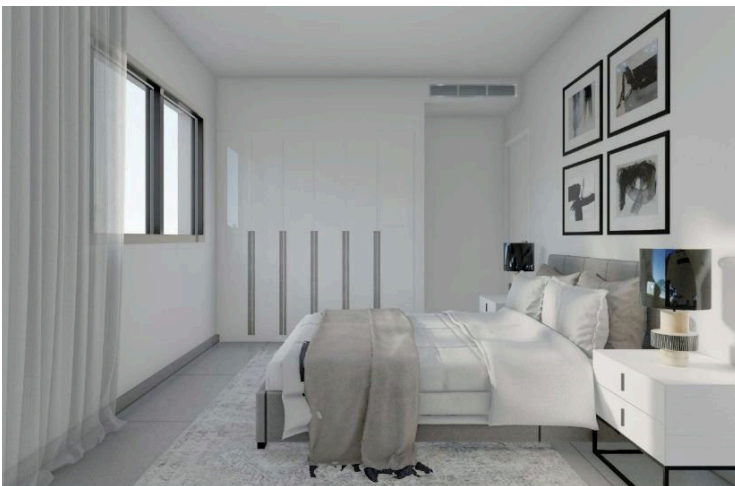
2181126

NEW 2 BEDROOM MODERN APARTMENT IN POLEMIDIA AREA!

 Kato Polemidia, Limassol

€300,000 +VAT





Overview

Specifications

Bedrooms

 2


Bathrooms

 1

Covered

 81.35 m²

Type	Apartment
Showers	1
Toilets	2
Status	Under construction

Year of construction	2024
Furnished	Unfurnished
Energy efficiency rating	 A

Description

For sale a modern apartment under construction, perfect for those looking to invest in a stylish new home. This unit features 81.35m² of internal space, offering two spacious bedrooms and a well-designed bathroom, ideal for comfortable living.

Located in Kato Polemidia, this area is known for its blend of convenience and tranquility. Residents enjoy easy access to various amenities, including shops, restaurants, and schools, ensuring daily needs are well catered to. The highway is nearby, making commuting effortless and linking you to other parts of the region.

This apartment boasts an A energy efficiency rating, promising lower utility bills and a reduced environmental footprint. The building is set to be completed in March 2026, providing a fresh, modern living space for its future owner. Additionally, a communal swimming pool enhances the lifestyle offered by this development, inviting relaxation and leisure.

This unfurnished apartment allows you to decorate and furnish it to your taste, making it truly your own. Don't miss this opportunity to own a piece of Kato Polemidia.

Contact Vivo Realty for more information and to schedule a viewing.



Additional information

Facilities

Aircondition, Provision

Outdoor shower

Solar water heater

Heating, Provision

Parking, Covered

Storage

Indoor pool, Communal

Pool, Communal

Features

Balcony

Easy access to highway

Fitted wardrobes

Luxury specifications

Shower

Bright

Easy access to main roads

Guest WC

Modern design

Double glazing

En suite shower

Investment opportunity

Near amenities

Contact us



Roula J. Andreou

 (+357) 96650308

 rjalim1@vivorealty.com.cy

