

2181099

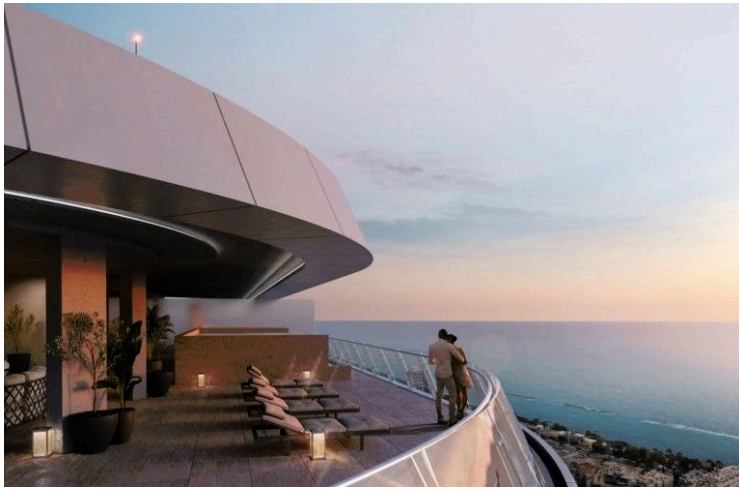
# PENTHOUSE OF 5+1 BEDROOMS WITH SPECTACULAR SEA AND CITY VIEWS!

 Mouttagiaka, Limassol

**€14,700,000** +VAT









# Overview

## Specifications

Bedrooms

 **6**

Bathrooms

 **1**

Covered

 **800.9 m<sup>2</sup>**

Type **Apartment**

Showers **5**

Toilets **6**

Status **Under construction**

Year of construction **2023**

Furnished **Unfurnished**

## Description

Located in one of the best areas of Limassol, and only 200m from the sea! A luxurious high-rise residential apartments spanning vertically over 25 storeys. Set to be completed in 2025. Is designed to resemble a floating structure above the waterfront, welcoming those who long to reside in a fully integrated urban development with style and highest specifications.

All 52 apartments of the project were carefully designed in order to enjoy uninterrupted sea views, providing that sought-after luxury island lifestyle. The internal finishes are all hand-selected as part of exclusive finishes encompassed within the project. Natural marbles and granites, top niche wood flooring and Italian kitchen and wardrobes dress the internal of the properties. The apartments offer the ultimate in calm, elegance and simplicity of leading contemporary design, while providing spectacular views across the sea and Limassol skyline.

An exclusive, timeless design for a unique building.

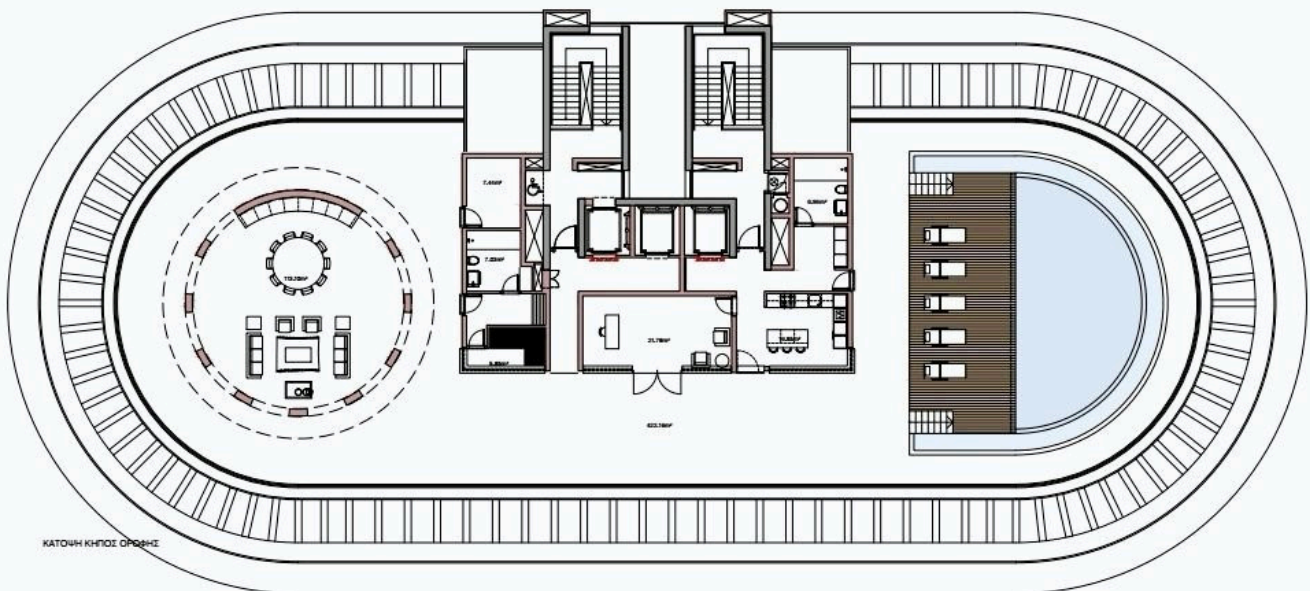
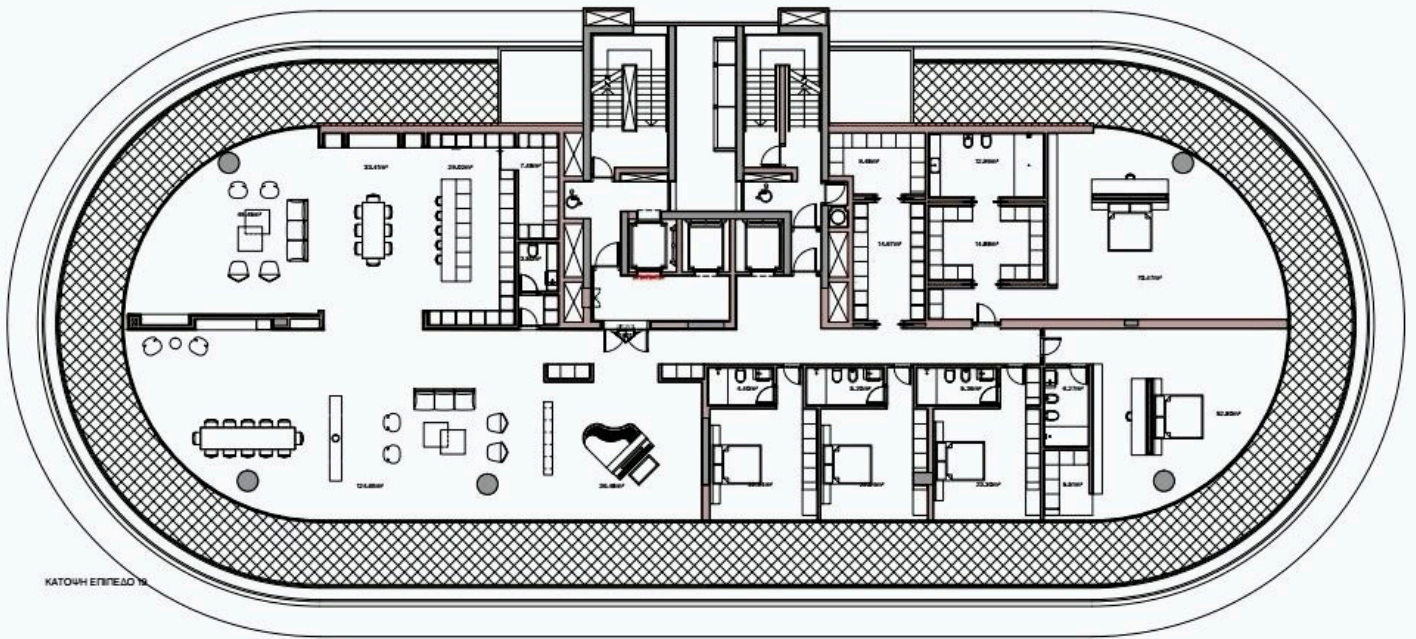
Building will have a rich infrastructure:

- Gym • Beauty salon • Sauna • SPA • Hammam • Swimming pool of semi-Olympic size • Indoor heated swimming pool • Tennis court • Children's room • Concierge
- Executive lounge • Security and 24/7 video monitoring • Areas for barbeque on the residential floors.

Kindly contact us for more info or to book an appointment for viewing!



## Floor plans



# Additional information

## Facilities

Aircondition, Central system

Heating, Underfloor

Outdoor shower

Sauna

Storage

Elevator

Indoor pool, Communal, overflow

Parking, Covered

Solar water heater

Tennis court

Gym

Landscaped garden

Pool, Communal, overflow

Spa

## Features

Balcony, front

Bright

Combined kitchen and dining area

Easy access to highway

En suite shower

Guest WC

Jacuzzi

Marble flooring

Near bus route

Rental potential

Smart home automation

Bar

Central TV system

Connected to electric mains

Easy access to main roads

Fitted wardrobes

High ceilings

Kitchen appliances

Modern design

Panoramic view

Sea view

Spacious rooms

Barbeque

City view

Double glazing

En suite bathroom

Garden, large

Investment opportunity

Luxury specifications

Near amenities

Play room


Shower

Walking distance to beach

## Contact us



**Roula J. Andreou**

 (+357) 96650308

 rjalim1@vivorealty.com.cy

