

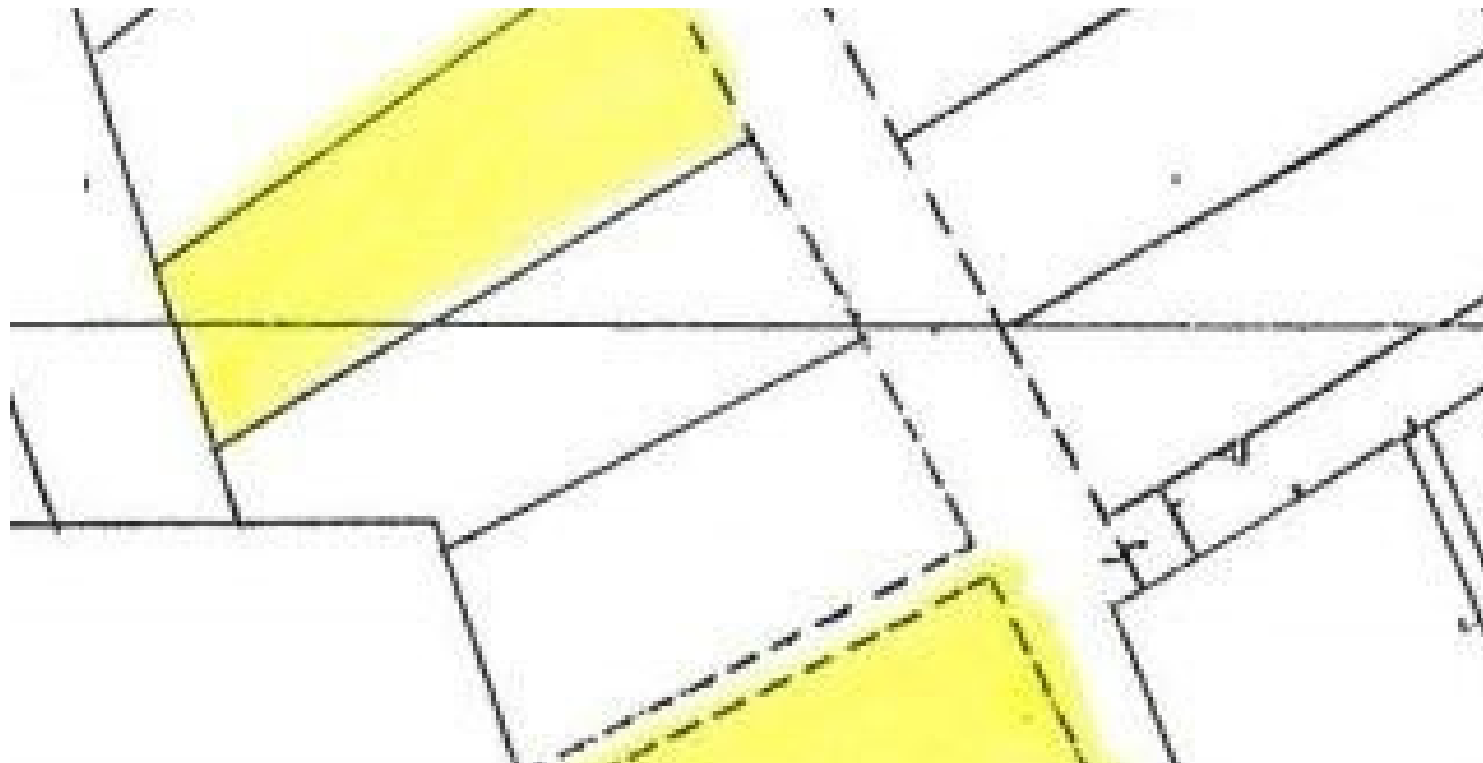
2180140

PERFECT PLOT FOR BUILDING YOUR DREAM HOUSE IN PANIOTIS HILLS!

 Paniotis Hills, Limassol

€720,000 +VAT





Overview

Specifications

Area

 820 m²

Type

Building Plot

Title deed

Yes

Description

This is a perfect residential plot to build your dream house in Paniotis Hills with sea and city views.

Paniotis is one of the most prestigious areas of Limassol with all amenities close by, easy access to the motor way and city center. Plot size 820sqm and the building density is 60% . For more info or viewing, contact us!



Additional information

Features

City view

Easy access to highway

Near amenities

Sea view

Planning zones

Zone	Cover factor	Build factor	Max height	Max floors	Affected percentage
Ka8	35%	60%	10 m	2	-

Contact us



Roula J. Andreou

 (+357) 96650308

 rjalim1@vivorealty.com.cy

