



VIVO
REALTY



STONE HOUSE OF FOUR BEDROOMS WITH SWIMMING POOL!

 [Limassol, Souni-Zanakia](#)

2179207





VIVO
REALTY

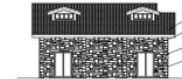
vivorealty.com.cy



FRONT ELEVATION



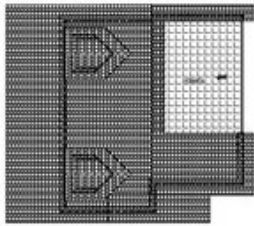
SIDE ELEVATION



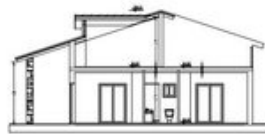
REAR ELEVATION



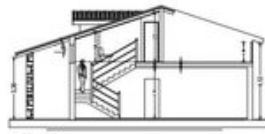
FRONT ELEVATION



GROUND FLOOR PLAN



FIRST FLOOR PLAN



SECOND FLOOR PLAN

Price	€430,000 +VAT	Type	Detached Villa
Bedrooms	4	Bathrooms	1
Covered	199 m ²	Covered veranda	28 m ²
Uncovered veranda	28 m ²	Plot	500 m ²
Year of Construction	2022	Status	Off plan
Area	Limassol, Souni-Zanakia		

Description

The house has 4 bedrooms, 2 bathrooms, guest w.c. kitchen/dining area, living room and a large uncovered veranda on the upper floor. Plot size 500m2 covered verandas 28m2 and the total covered area of the house is 199m2. Delivery to be 12 months' time from the day of signing a contract of sale.

This is a list of what is included in the price:

- 1.Solar and electric water heating system.
- 2.1m paving around the house.
- 3.Ceramic tiles to all ground floors and bathrooms.
- 4.Top soil garden preparation.
- 5.Preparation for air conditioning in all rooms. (split units).
- 6.Preparation for heating system with radiators (electrical).
- 7.Provision for installation of photovoltaic panels.

Optional Extras

- 1.Swimming pool 4m x 8m.
- 2.Air conditioning in all rooms. (split units).
- 3.Photovoltaic panels with inverter.
- 4.Covered parking space.

Delivery to be 12 months' time from the day of signing a contract of sale.

For more info please contact us!



Roula J. Andreou
 Marketing Manager & Consultant

✉ rjalim1@vivorealty.com.cy
 ☎ (+357) 96650308

Facilities

Aircondition, Provision

Parking, Covered

Storage

Solar water heater

Heating, Central, Electric

Pool, Private

Pergola

Solar photovoltaic panels, Provision

Features

Combined kitchen and dining area

Balcony

Courtyard

Internal stairs

Double glazing

En suite Shower

Barbeque

Connected to electric mains

Fitted wardrobes

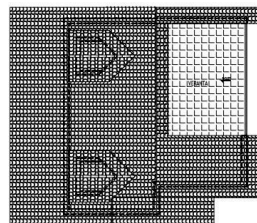
Garden, large

Bright

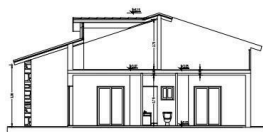
Guest WC

Country view

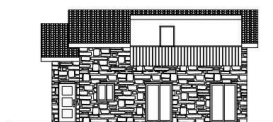
Floor plans



ΚΑΤΩΦΗ ΟΡΘΩΣΗ
ΚΛΙΜΑΚΑ 1:100



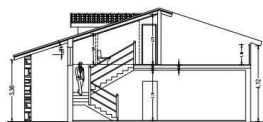
ΤΟΜΗ Β-Β
ΚΛΙΜΑΚΑ 1:100



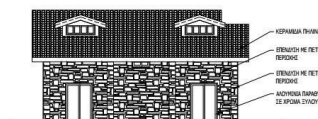
ΝΟΤΙΑ ΟΨΗ
ΚΛΙΜΑΚΑ 1:100



ΠΑΝΤΑ ΟΨΗ - ΑΝΑΤΟΛΙΚΗ
ΚΛΙΜΑΚΑ 1:100



ΤΟΜΗ Α-Α
ΚΛΙΜΑΚΑ 1:100



ΒΟΡΕΙΑ ΟΨΗ
ΚΛΙΜΑΚΑ 1:100



ΠΑΝΤΑ ΟΨΗ - ΔΥΤΙΚΗ
ΚΛΙΜΑΚΑ 1:100