



VIVO
REALTY

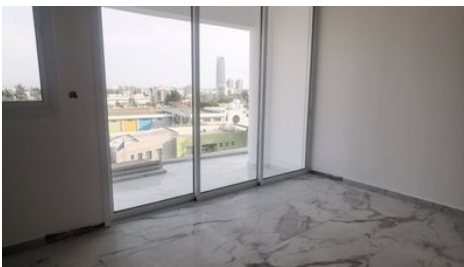


MODERN TWO BEDROOM APARTMENT IN LINOPETRA

 [Limassol, Linopetra](#)

2179197





Price	€350,000 +VAT	Type	Apartment
Bedrooms	2	Bathrooms	1
Covered	85 m ²	Covered veranda	20 m ²
Year of Construction	2022	Status	Under construction
Floor	4 / 3	Area	Limassol, Linopetra

Description

New two bedroom apartment located in Linopetra area close to jumbo and close to many amenities. This apartment offers a spacious open plan kitchen, dining and living area, two bedrooms one main bathroom, a separate guest toilet and big veranda. Delivery time approximately end of 2022.



Roula J. Andreou

Marketing Manager & Consultant

✉ rjalim1@vivorealty.com.cy

☎ (+357) 96650308

Facilities

Aircondition, Split system
Elevator

Heating, Provision

Features

Shower
Easy access to highway
Balcony
Pressurized water system
Open plan
Double glazing
Veranda
Near amenities

Easy access to main roads
Spacious rooms
Fitted wardrobes
Bright
Parquet flooring
Guest WC
Near bus route
Kitchen appliances