

2178575

# BEUATIFUL 3 BEDROOM PETNHOUSE WITH ROOF GARDEN AND PRIVATE POOL

 Mesa Geitonia, Limassol

**€950,000** +VAT







# Overview

## Specifications

Bedrooms

 3


Bathrooms

 1

Covered

 140 m<sup>2</sup>

Type	Apartment
Showers	2
Toilets	3
Status	Key ready

Year of construction	2023
Furnished	Unfurnished
Energy efficiency rating	 A

## Description

Ready amazing penthouse apartment of 3 bedrooms with roof garden and private pool! Total cover areas 269m2. Beautifully designed contemporary kitchen and bathrooms feature quality fixture and fittings. This residence blends elegance and style with the latest technology-innovated, sustainable features. Fabulously light and open plan areas provide plenty of space for families to share a relaxing time together. The apartment comes with new exclusive furniture.

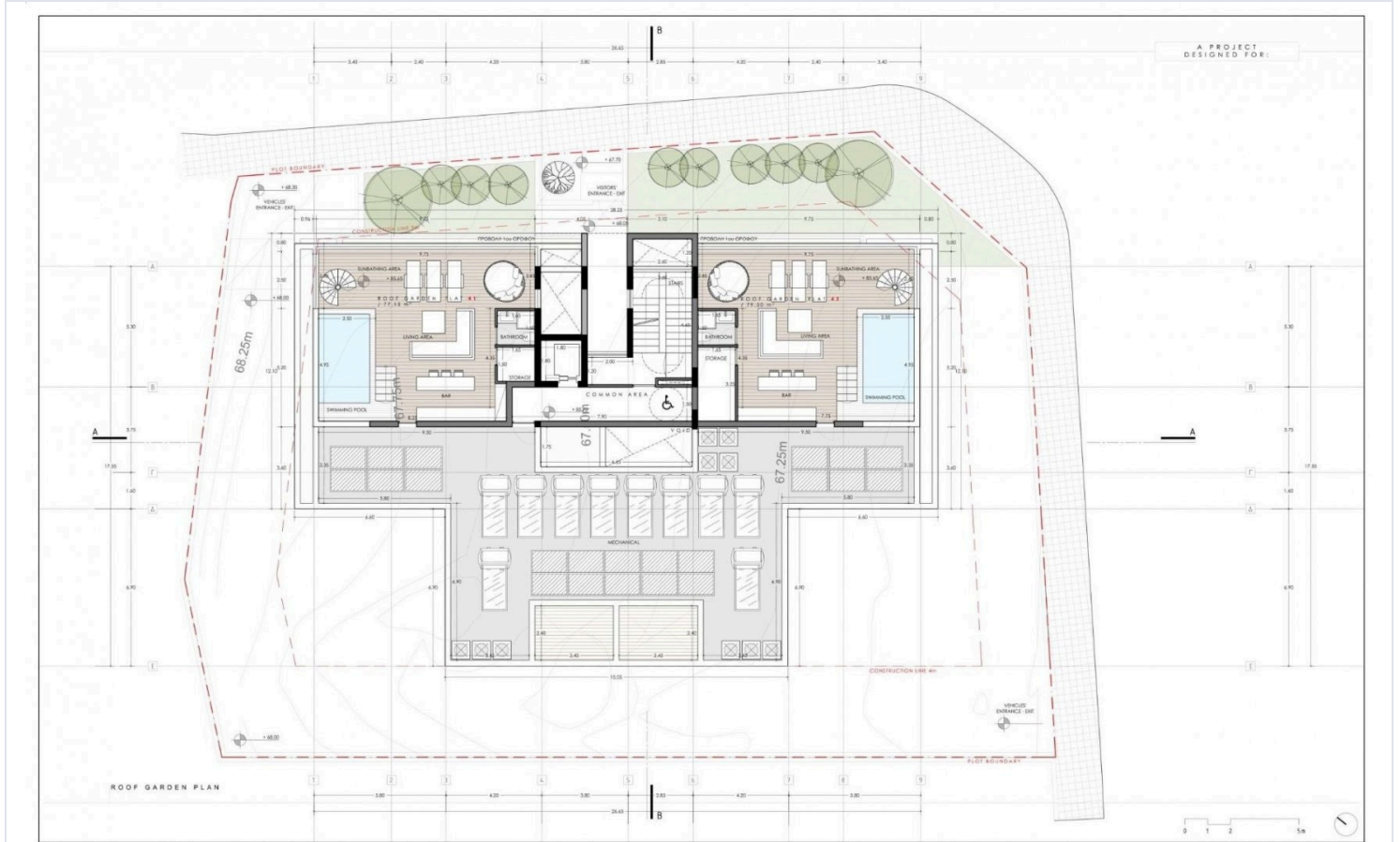
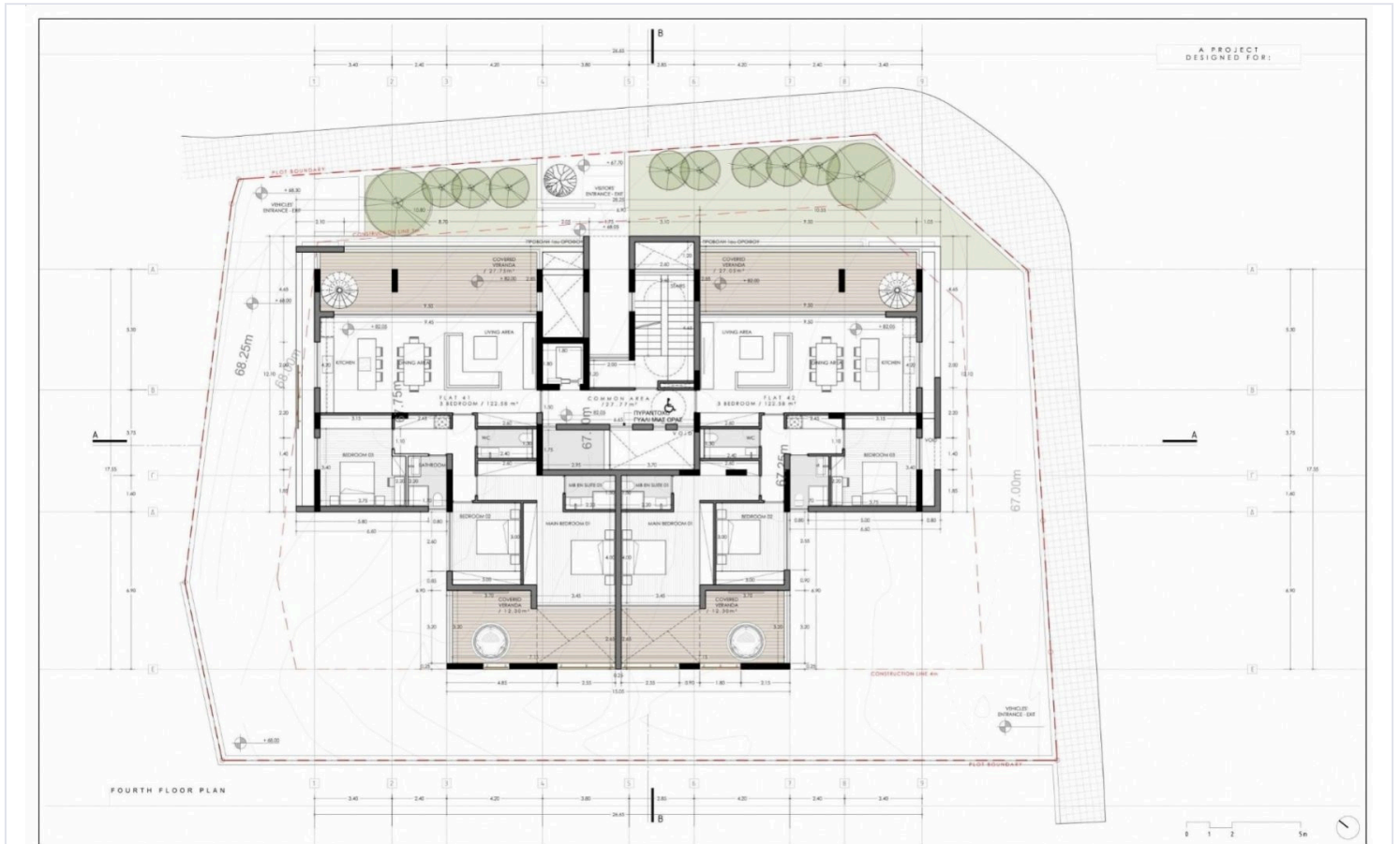
This building has been delivered in September 2023

### FEATURES:

- High-quality porcelain tiles
- High-quality laminated parquet floors in the bedrooms
- Modern Italian high-standard kitchen cabinets and wardrobes
- Aluminium windows with thermal insulation performance, double glazed glass to provide extra thermal insulation.
- Toshiba A/C will be provided only in the enclosed with gypsum-boards areas such as living rooms. In bedrooms and kitchen is optional and not included. Also, piping goes to the roof to be connected with VRV system. VRV system is optional and not included.
- A solar panel to provide hot water & reservoir tank for each flat. Also, there will be provision for a water softener.
- A pressurized system will be installed to provide extra pressure of water in each flat.



# Floor plans



# Additional information

## Facilities

Aircondition, Central system

Landscaped garden

Solar water heater

Elevator

Parking, Covered

Storage

Heating, Underfloor

Pool, Private

## Features

Balcony, back

City view

Double glazing

En suite shower

Garbage disposal

Investment opportunity

Luxury specifications

Near amenities

Balcony, front

Combined kitchen and dining area

Easy access to highway

Entrance gate, automated

Guest WC

Kitchen appliances

Marble flooring

Bright

Connected to electric mains

Easy access to main roads

Fitted wardrobes

Heart of city center

Laminate flooring

Modern design

## Contact us



**Roula J. Andreou**

 (+357) 96650308

 rjalim1@vivorealty.com.cy