

2177665

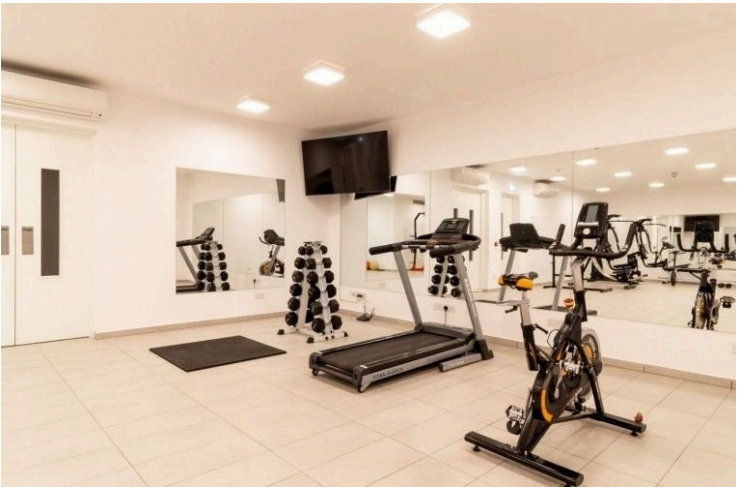
# LUXURY 4 BEDROOM PENTHOUSE ON TWO LEVELS IN P. GERMASOGIAS!

📍 Potamos Germasogeias, Limassol

€1,800,000







# Overview

## Specifications

Bedrooms

 4

Bathrooms

 1

Covered

 160 m<sup>2</sup>

Type	Apartment
Showers	2
Toilets	3

Status	Key ready
Year of construction	2020
Furnished	Unfurnished

## Description

Amazing 4 bedroom Penthouse on two levels, in Potamos Germasogias with total covered areas 284m2. Luxury apartment in walking distance to the sea in one of the most prestigious areas of Limassol city.

A combination of the classical architectural style with the highest level of finishing and that's what makes this project unique!

The Project has a Class "B" Energy Efficiency Certificate - the highest class for buildings of this type (class "A" can only be assigned to buildings that independently generate electricity from the energy of the sun or wind).

Main specifications of the complex on the whole:

- Secured fenced-in territory
- Elaborately finished front entrance (entry to the building). Expensive marble, beautiful chandeliers and furniture. Ceiling height is 5.20 m. Classical music plays at the entrance to the lobby.
- A concierge
- 24/7 video monitoring
- 15x7 m swimming pool finished with mosaics
- Fitness center
- Sauna (for men / women)

Apartment specifications:

- Net ceiling height is 3.20 m.
- High (2.4 m) interior doors imported from Italy
- Living room and bedroom floors are expensive marbles, granites, and parquet
- Double-pane insulated windows of hard species of wood adjusted to the Cyprus climate and matching the classical interiors and exteriors of the buildings
- Under floor heating systems using cutting-edge technology
- Mitsubishi or Daikin hot/cold conditioning systems



# Additional information

## Facilities

Aircondition, Central system

Heating, Underfloor

Sauna

Elevator

Indoor pool, Communal

Solar water heater

Gym

Parking, Covered

Storage

## Features

Alarm system

Barbeque

Double glazing

Elevated

Luxury specifications

Balcony

Bright

Easy access to highway

En suite bathroom

Marble flooring

Bar

Ceramic tiles

Easy access to main roads

High ceilings

## Contact us



**Roula J. Andreou**

 (+357) 96650308

 rjalim1@vivorealty.com.cy