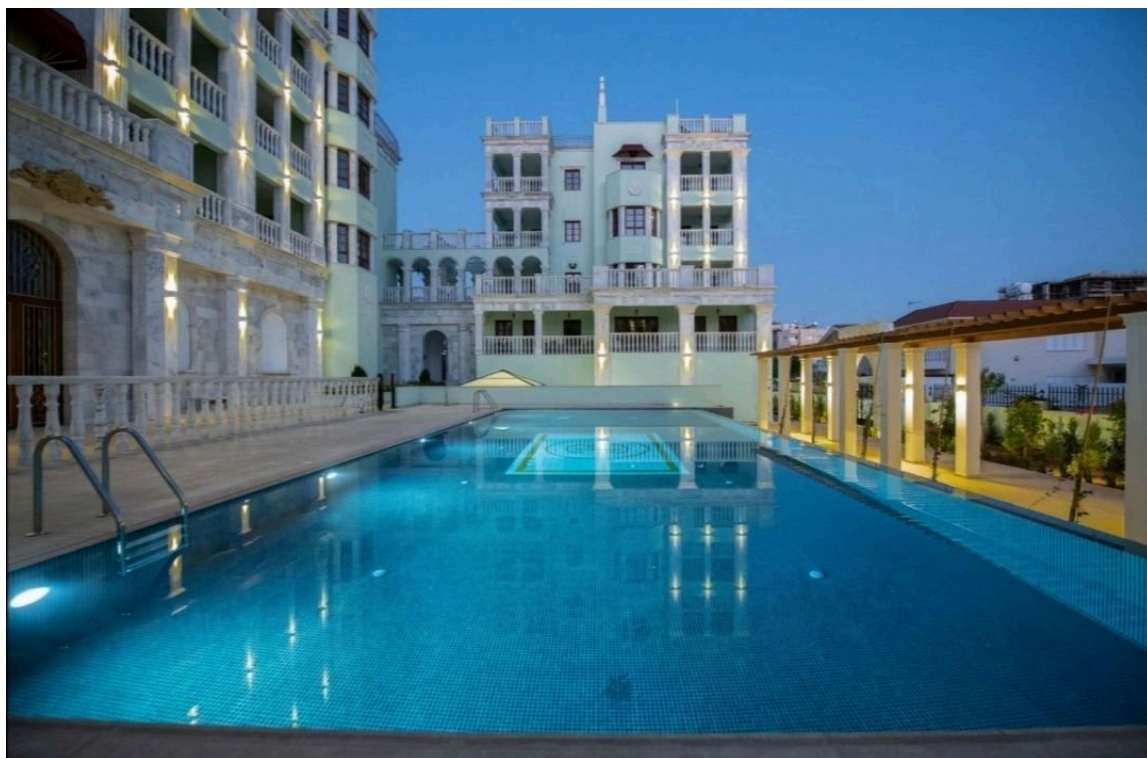




**VIVO**  
REALTY

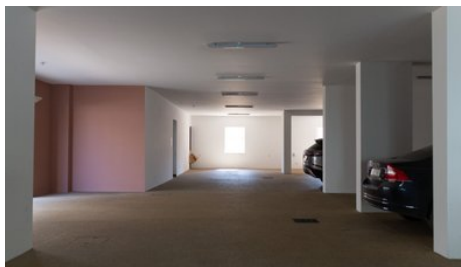
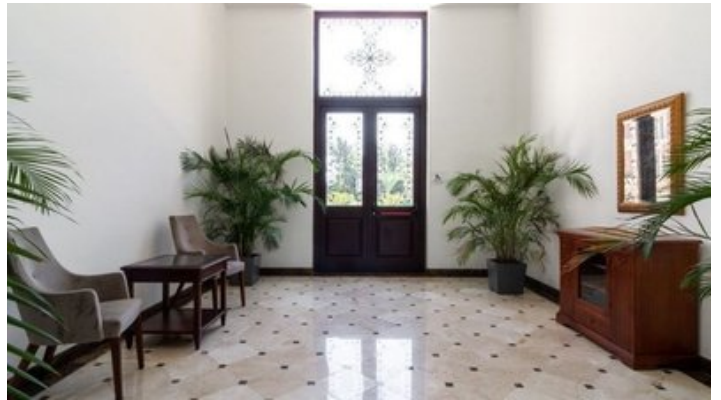


## THREE LEVEL PENTHOUSE WITH ROOF TERRANCE AND POOL!

📍 Limassol, Potamos Germasogeias

2177664





<b>Price</b>	€1,350,000 +VAT	<b>Type</b>	Apartment
<b>Bedrooms</b>	3	<b>Bathrooms</b>	1
<b>Covered</b>	134 m <sup>2</sup>	<b>Covered veranda</b>	6 m <sup>2</sup>
<b>Uncovered veranda</b>	65 m <sup>2</sup>	<b>Year of Construction</b>	2021
<b>Status</b>	Key ready	<b>Area</b>	Limassol, Potamos Germasogeias

## Description

A Unique design penthouse on 3 levels with total areas of 205m<sup>2</sup>. This amazing penthouse has a roof terrance with private pool. Location of this property is 250m from the sea side in Potamos Germasogias and very close distance from Dassoudi beach one of the best Limassol beaches with eucalyptus and pine trees grove. Apartment specifications as follows:

- Net ceiling height is 3.15 m.
- High (2.4 m) interior doors
- Living room and bedroom floors are expensive marbles, granites and parquet
- Double-pane insulated windows of hard species of wood adjusted
- Under floor heating systems using cutting-edge technology
- Mitsubishi hot/cold conditioning systems
- Bathroom floors and walls are expensive marbles and granites
- Subtle details like bathroom air conditioning or a bidet in them
- Kitchen units and hygiene equipment by top European brands

Features of the building: Gym, Sauna, 15x7m common pool, 24/7 video monitoring, secured fenced-in territory. Elaborately finished front entrance, expensive marble and beautiful chandeliers and furniture. Supermarket, bakery, pharmacy, and various facilities are only 250m away. For more info or viewing contact us!



### Roula J. Andreou

Marketing Manager & Consultant

✉ rjalim1@vivorealty.com.cy

☎ (+357) 96650308

## Facilities

Aircondition, Central system

Parking, Covered

Elevator

Sauna

Solar water heater

Heating, Underfloor

Indoor pool, Communal

Gym

Storage

---

## Features

Easy access to main roads

High ceilings

Balcony

Ceramic tiles

Alarm system

Marble flooring

Luxury specifications

Easy access to highway

Elevated

Bright

Bar

Double glazing

En suite Bathroom

Barbeque