

2177479

GRAND PENTHOUSE OF 8 BEDROOMS AND PRIVATE POOL!

 Agios Tychonas, Limassol

€16,000,000 +VAT





Overview

Specifications

Bedrooms



Covered

 **688 m²**

Type	Apartment	Status	Key ready
Covered veranda	109 m²	Year of construction	2022
Uncovered veranda	184 m²		

Description

Grand Residences, the 8-bedroom “Emperor” penthouse with a private “infinity” pool, three elevators, a roof garden, an internal winter garden and all the characteristics of a luxury villa with the difference that this villa seems to soar in the clouds, and from its windows on the top of this luxurious residence with stunning views of the city, sea and mountains are offered.

It's a 23-storey building, divided into multiple areas comprising high-end residential apartments and exclusive two fine dining restaurants, a garden terrace, VIP bar, wine cellar and jewellery boutique, cigar lounge, world-class Spa facilities, sauna, Haman, in-door swimming pool and a spacious piazza and courtyard as well as half-Olympic size swimming pool.

An important feature of the project is located on levels 13 to 14 fine dining restaurant with a separate elevator and parking, and a beautiful sky garden while opulent Roman Baths, sauna and gym are accommodated on levels 5 to 6 all finished exceptionally. The building itself is clad with natural polished travertine.

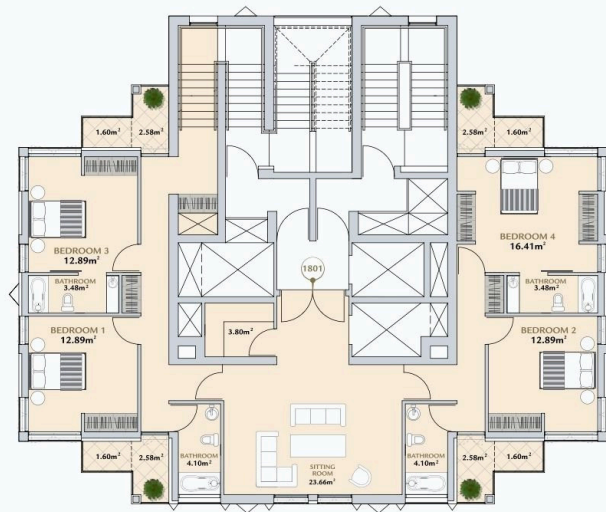
At road level there is a grand plaza leading to a gourmet restaurant, professional SPA, sauna, hammed, massage room, heated pool in a cave style enclosure, cigar lounge and a VIP bar for club members, wine cellar and jewellery boutique. At this level there is also a parking for residents (36 parking spaces) as well as a separate parking for restaurant and commercial area visitors and guests with 40 parking spaces.

On the first floor is located the entrance lobby & reception on two levels. On the grounds of the complex there is a half-Olympic size 25x10m. mosaic swimming pool with a bar, tennis court, park, and a playground together with a gym and locker rooms. Of course the project's grounds are enclosed with a secure fence, with 24-hour video surveillance. For more info regarding this super luxury penthouse please contact us!



Floor plans

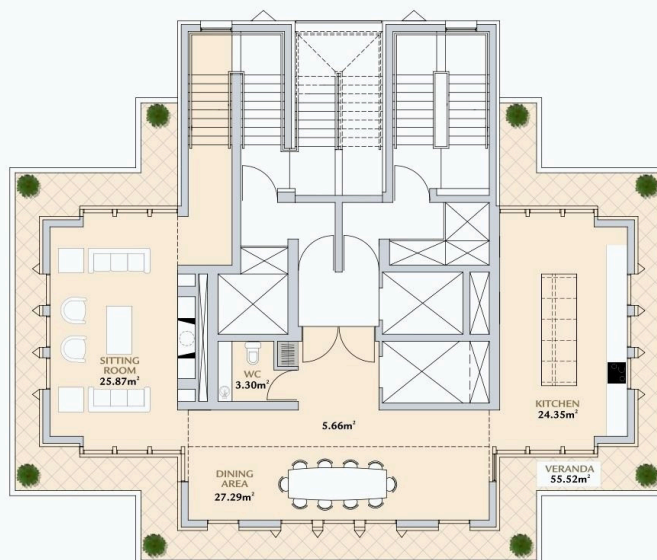
EMPEROR 8-BEDROOM PENTHOUSE LEVEL 18



Bedrooms	8	Covered planter area sqm	-	Roof terrace with swpool	yes
Internal area sqm	579	Total covered area sqm	688	Circulation area sqm	210
Covered verandas sqm	109	Uncovered verandas sqm	184	Total area sqm	1082

26

EMPEROR 8-BEDROOM PENTHOUSE LEVEL 19



27



Additional information

Facilities

Aircondition, Central system

Heating, Underfloor

Spa

Elevator

Parking, Garage, double

Storage

Gym

Solar water heater

Tennis court

Features

Alarm system

CCTV

Double glazing

En suite bathroom

Fitted wardrobes

Kitchen appliances

Sea view

Balcony, front

City view

Easy access to highway

En suite shower

Garden

Near amenities

Shower

Bright

Connected to electric mains

Easy access to main roads

Entrance gate, automated

Guest WC

Pressurized water system

Contact us



Roula J. Andreou

 (+357) 96650308

 rjalim1@vivorealty.com.cy

