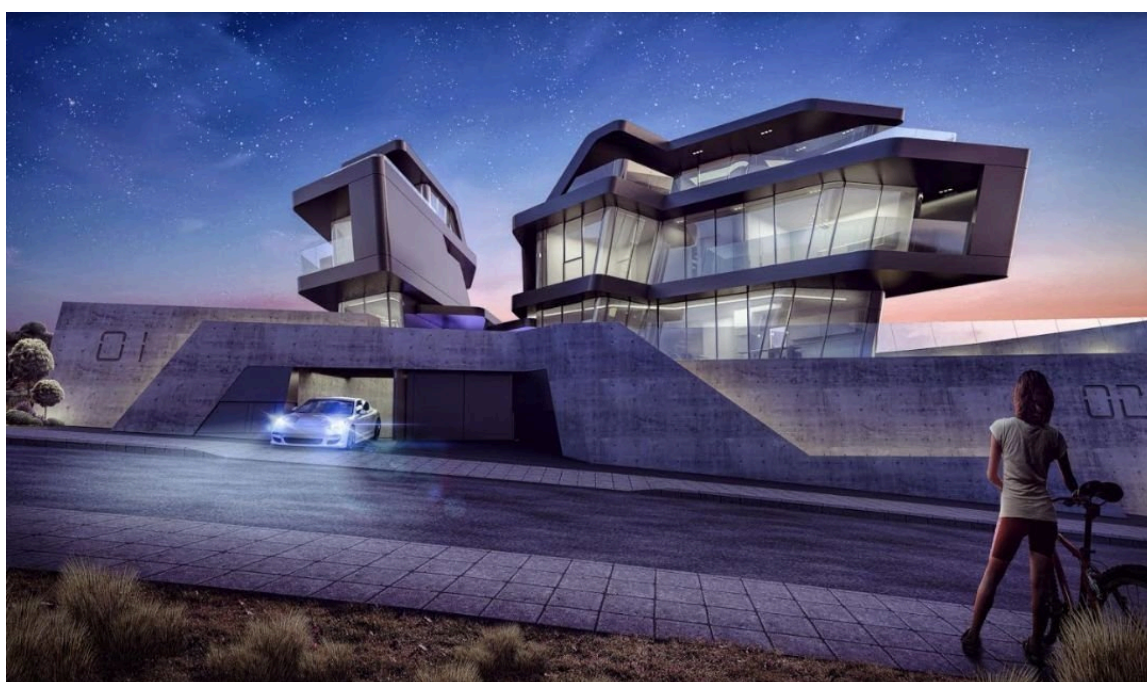


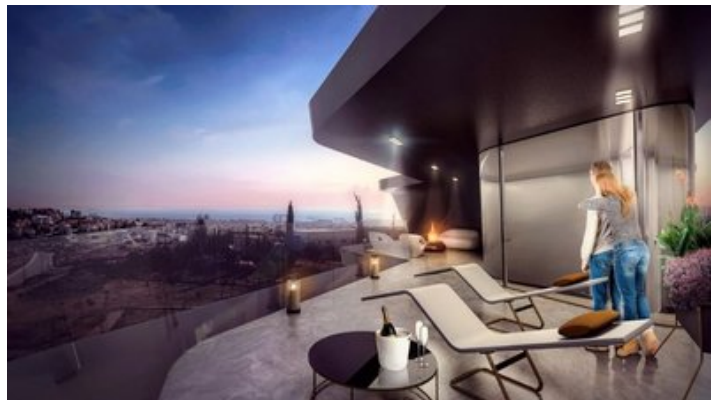
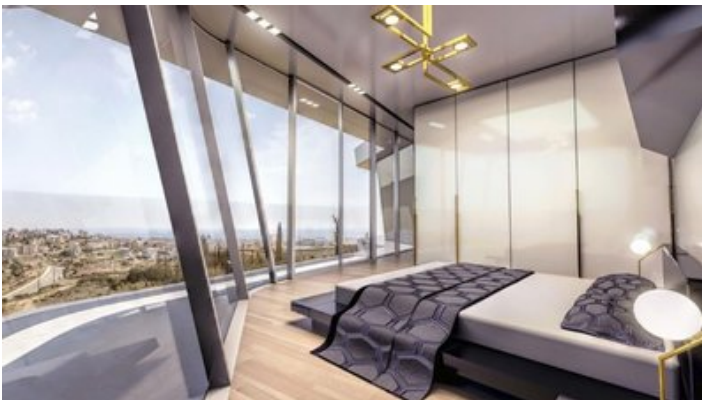
VIVO
REALTY



**UNIQUE STYLE VILLA WITH MAGNIFICENT SEA
AND CITY VIEWS!!**

 **Limassol, Panthea**

2175275



Price	€850,000 +VAT	Type	Detached Villa
Bedrooms	3	Bathrooms	3
Covered	179 m ²	Roof garden	39.7 m ²
Covered veranda	37.4 m ²	Uncovered veranda	105 m ²
Plot	390.7 m ²	Year of Construction	2021
Status	Under construction	Floor	3 / 3
Area	Limassol, Panthea		

Description

This villa has been developed to define a unique architectural style for the new organized residential master plan located at Panthea in Limassol city. The 3 bedrooms villa is located on the high hills of the city approximately 200m above the sea level at that allows magnificent views in directions. The plot size is 390.7sqm internal areas: 179sqm covered verandas 37sqm and uncovered verandas 105sqm, total cover areas 286sqm. This beautiful modern style villa offers long panoramic views internally and engages the surrounding landscape. For viewing please contact us!



Roula J. Andreou

Marketing Manager & Consultant

✉ rjalim1@vivorealty.com.cy

☎ (+357) 96650308

Facilities

Aircondition, Central system

Pool, Private

Solar water heater

Heating, Central

Storage

Solar photovoltaic panels

Features

Balcony

Utility room

Investment opportunity

Alarm system

Guest WC

Quiet Area

Modern design

Sea view

Roof Garden

Fitted wardrobes

Entrance gate

Mountain view

Double glazing

Veranda, large

En suite Bathroom

Panoramic view

Barbeque