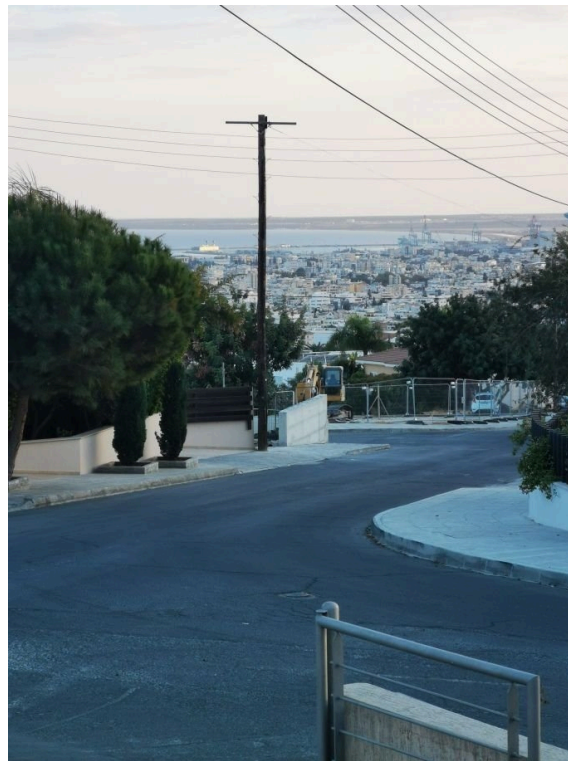




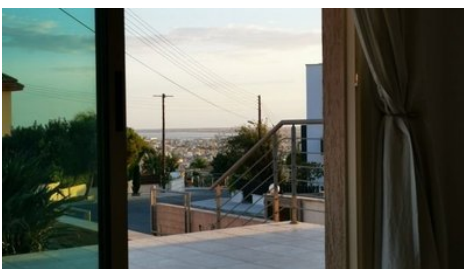
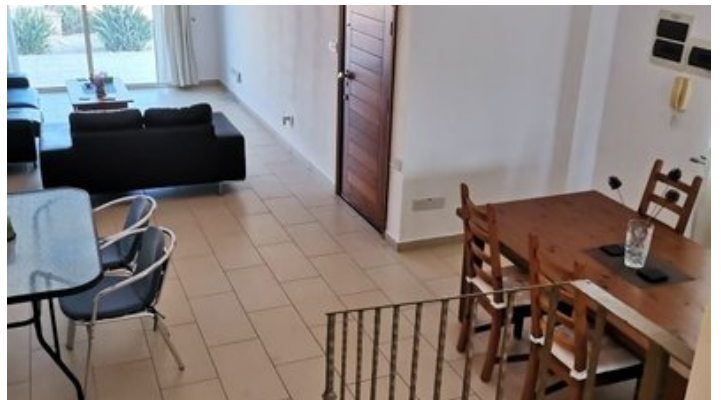
VIVO
REALTY



3 BEDROOM SEMI DETACHED HOUSE IN PANTHEA AREA

 [Limassol, Panthea](#)

2175251



Price	€310,000	Type	Semi-Detached Villa
Bedrooms	3	Bathrooms	2
Covered	128 m ²	Covered veranda	35 m ²
Plot	221 m ²	Title deed	Final approval
Status	Resale	Energy efficiency rating	B
Area	Limassol, Panthea		

Description

Semi-Detached house for sale in Panthea area, close to all amenities, close to private and local schools, only few minutes drive from the sea side and Limassol town center.

This lovely 3 bedroom semi detached house was built in 2008. In the ground level is a comfortable sitting and dining area with sea views from the front porch. Open plan fully equipped kitchen and door access to the back yard. Lounge area, one guest w.c. and a storage place under the stair case. Upper level has three good size bedrooms, the master bedroom with ensuite shower and a balcony with sea views, one family bathroom and a loft area. Double glazed windows, fully a/c units, provision for c/h cover and uncover parking area, and a garden back and in front of the house. The property it is offered with all electrical appliances. For viewing please contact us!



Roula J. Andreou

Marketing Manager & Consultant

✉ rjalim1@vivorealty.com.cy

☎ (+357) 96650308

Features

Fitted wardrobes

Under stairs storage

Internal stairs

Open plan

Guest WC

Quiet Area

En suite Bathroom

Kitchen appliances

Garbage disposal

Garden

City view

Double glazing

Veranda

Rental Potential

Internet