

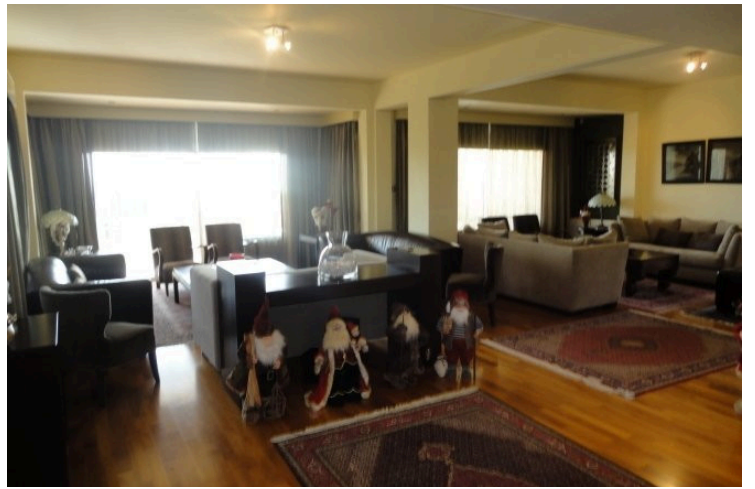
2159527

RESALE FOUR BEDROOM VILLA IN PANTHEA AREA!

 Panthea, Limassol

€980,000 ~~€1,200,000~~





Overview

Specifications

Bedrooms

 4

Bathrooms

 3

Covered

 320 m²

Type **House**

Showers **1**

Toilets **4**

Plot **667 m²**

Status **Resale**

Title deed **Yes**

Description

A beautiful 4 bedrooms villa excellently designed and custom built to the highest standards, located in a prestige area of Limassol. The plot size is 667sqm and cover areas 320sqm plus the veranda. The house located in Panthea area in a very quiet neighbourhood. It consists of a spacious separated fitted kitchen with sitting/TV area with direct view to the green garden. There is also a separated small kitchenette for laundry and guest w.c. Huge living and dining area again with views to the garden. Upstairs are 4 spacious bedrooms with one en-suite with bathroom and walk in wardrobes and one separated main family bathroom. This property has many facilities such as central heating, air-conditioning, alarm system, security camera system, double glazed windows garage, storage, BBQ area utility/ laundry room and many more extras. Its a beautiful home for a family!! Title deeds available.



Additional information

Facilities

Aircondition, Split system

Heating, Central

Parking, Covered

Solar photovoltaic panels

Features

Alarm system

Balcony

Double glazing

Garden

Guest WC

Internet

Satellite TV

Contact us



Roula J. Andreou

 (+357) 96650308

 rjalim1@vivorealty.com.cy

