

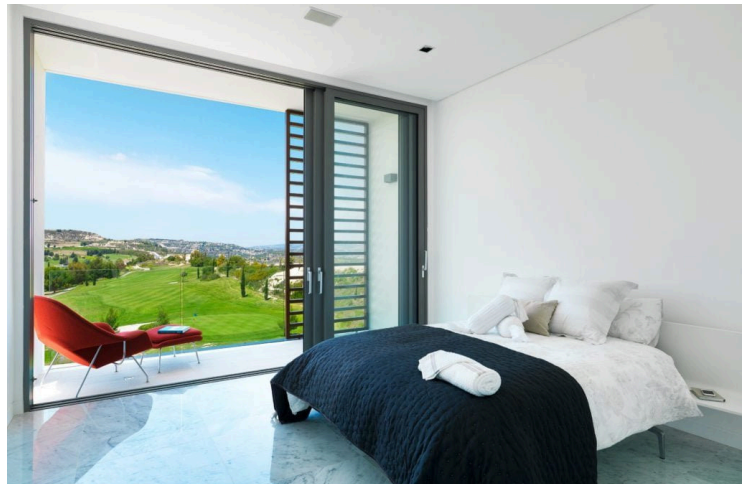
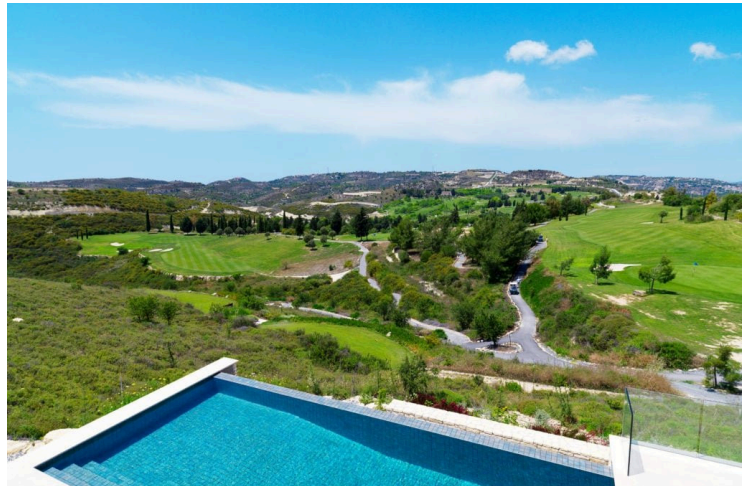
185707

# THREE BEDROOM VILLA IN A RESORT-IN TSADA\_ PAPHOS

 Tsada, Paphos

€2,220,000





# Overview

## Specifications

Bedrooms

 3

Bathrooms

 3

Covered

 200 m<sup>2</sup>

Type	<b>House</b>
Toilets	<b>1</b>
Plot	<b>1198 m<sup>2</sup></b>

Status	<b>Under construction</b>
Year of construction	<b>2026</b>

## Description

A striking glass bridge leads you to your front door at Amalthia, a beautifully bright villa with full-height, dual-aspect windows throughout. The spacious ground floor master suite features a stylish walk-through wardrobe, and an al fresco dining courtyard opens onto the poolside terrace.

This property is part of a luxury lifestyle residential resort which comes with many benefits and world-class facilities including; 18-hole golf course with contemporary Clubhouse, destination wellness Spa, sports ground, hotel-style accommodation, a central square with dining options and boutique stores.

Property Specifications:

3 bedrooms 4 bathrooms, 3 ensuite and 1 guest toilet 1449 square meters plot Total covered area of 243 square meters Private swimming pool Private covered parking Underfloor heating Concealed VRV system Landscaped gardens Photovoltaic panels

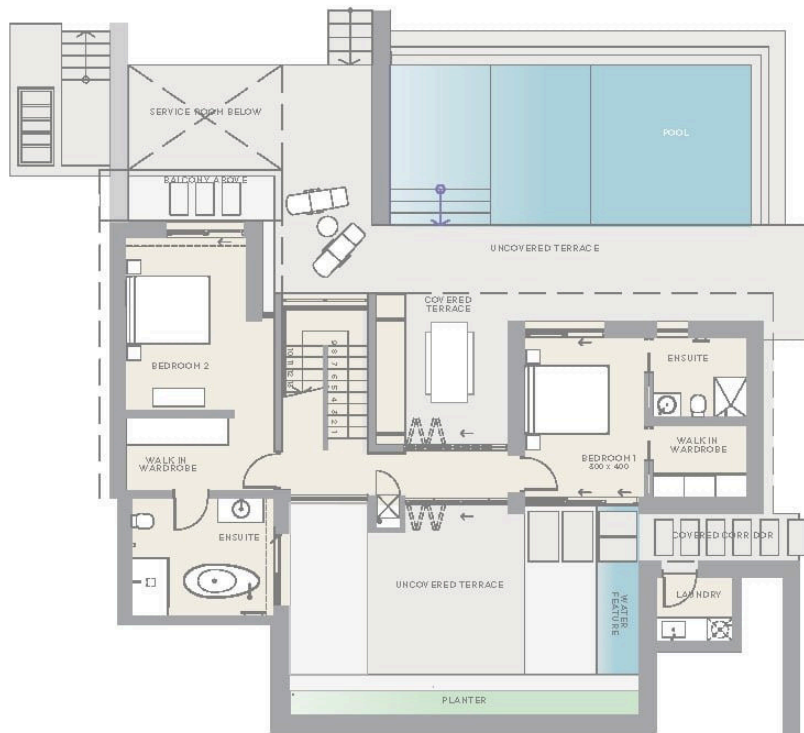
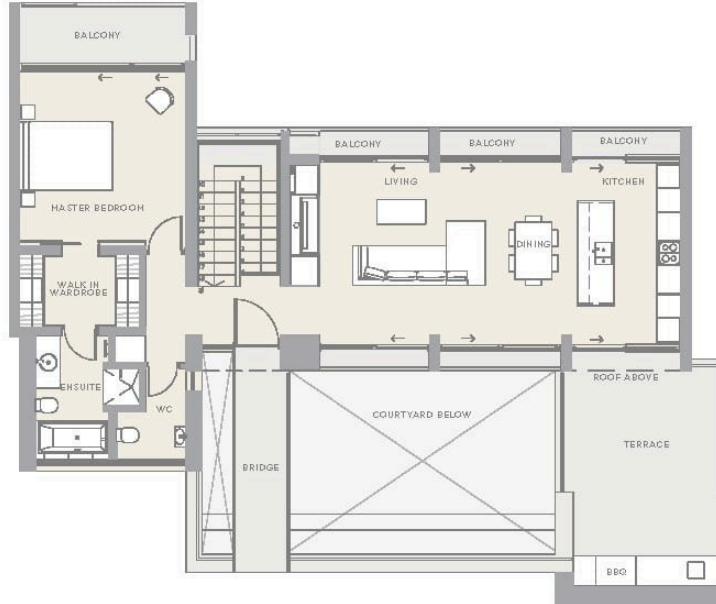
Amenities:

Clubhouse with restaurant, cafe and bar Wellness Spa 18-hole golf course Amaracus restaurant Village centre with boutique stores Sports ground with tennis academy Children's playground Hiking and Mountain bike paths the resort is an exclusive residential retreat perched on a tranquil hilltop within a 5 million square meter Natura 2000 protected landscape, offering a harmonious blend of modernity, tradition, and nature. inspired by the local Cypriot landscape, The resort embraces a philosophy of holistic wellbeing, connecting residents to nature while balancing adventure and discovery with peace and tranquility. The development offers a collection of bespoke Residences, Villas, and Suites, each thoughtfully designed to capture natural light and frame extraordinary views, while harnessing the cool hillside breezes. Ranging from intimate suites to expansive residences with 2 to 5 bedrooms, these homes



# Floor plans

AMALTHIA



# Additional information

## Facilities

Clubhouse

Heating, Underfloor

Landscaped garden

Parking, Covered

Pool, Private

## Features

Barbeque

En suite bathroom

Modern design

Sea view

## Contact us



### Office Properties

 (+357) 25871010

 [info@vivorealty.com.cy](mailto:info@vivorealty.com.cy)

