

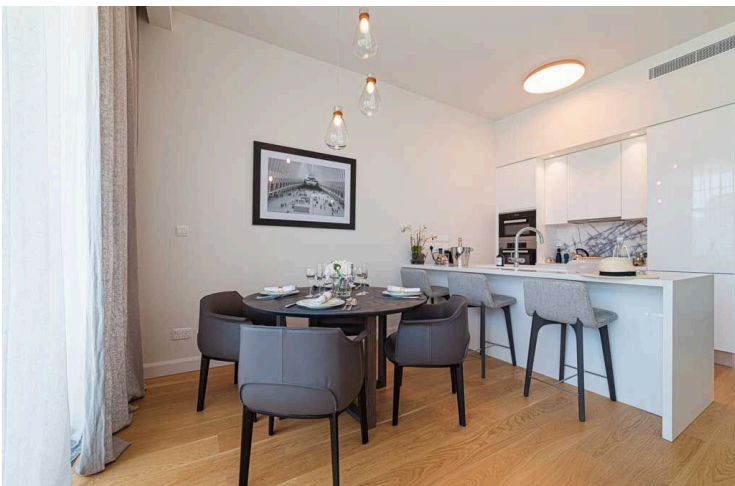
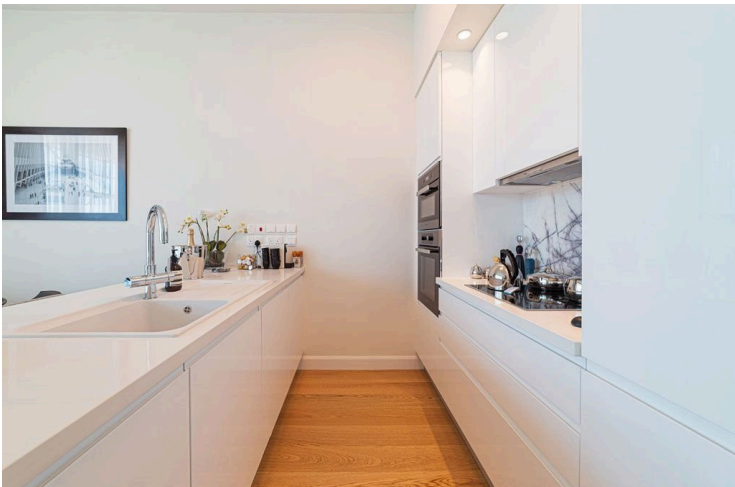
185453

LUXURIOUS DUPLEX 2 BEDROOM APARTMENT IN POTAMOS GERMASOGEIAS

 Potamos Germasogeias, Limassol

€2,000,000 +VAT





Overview

Specifications


Bedrooms

 2

Covered

 108.65 m²

Type	Apartment
Toilets	3
Covered veranda	27.21 m²
Uncovered veranda	36.05 m²

Status	Under construction
Furnished	Unfurnished
Energy efficiency rating	 A

Description

Luxurious duplex 3 bedroom apartment located in Potamos Germasogeias.

Only 500 meters from the sea. This apartment is situated in a complex with communal swimming pool, gym, sauna, covered parking, landscaped garden, large veranda, high ceiling, parquet flooring, double glazed windows, underfloor heating and air condition split units, intercom system and it is close to all city amenities.

MAJOR BENEFITS:

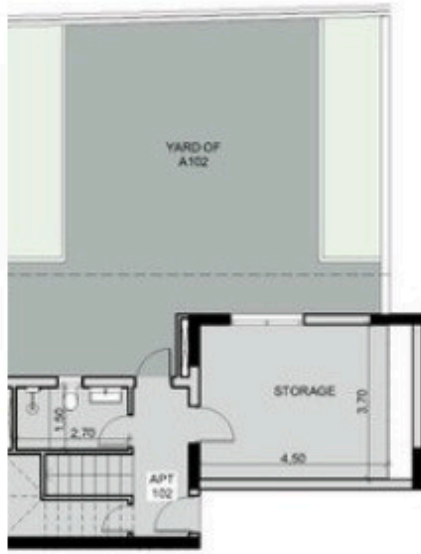
- . Landmark architecture from one of London's leading architects
- . 500 meters from sandy beach and city amenities of Limassol's tourist area
- . Internal infrastructure: outdoor pool, indoor pool, gym, sauna, lounge, kids club, covered parking, large landscaped gardens
- . Large balconies
- . High ceilings (3.15 m)
- . High standard finishes (parquet floors, high doors of 2.4 m, security entrance doors, thermal aluminum window frames, top standard in-built furniture, and sanitary ware)
- . Water underfloor heating and VRV air conditioning

INTERIOR SPECIFICATION:

- . Semi-solid parquet floors in each room
- . Marble floor and walls in the toilets and bathrooms
- . High ceilings (3.15 m)
- . Security entrance doors
- . Intercom system
- . Under floor heating and central VRV conditioning



Floor plans



ROUND FLOOR PLAN



BASEMENT PLAN



1st FLOOR PLAN

APARTMENT 102

INDOOR AREA	$42,11\text{m}^2 + 108,65\text{m}^2 = 150,76\text{m}^2$
COVERED VERANDAS	$21,49\text{m}^2 + 5,72\text{m}^2 = 27,21\text{m}^2$
BASEMENT STORE	$7,02\text{m}^2$



Additional information

Facilities

Aircondition, Split system

Gated complex

Indoor pool, Communal

Pool, Communal

Childrens playground

Gym

Landscaped garden

Sauna

Elevator

Heating, Underfloor

Parking, Covered

Features

Bright

Easy access to highway

Internal stairs

Modern design

Veranda

City view

Easy access to main roads

Luxury specifications

Near amenities

Walking distance to beach

Double glazing

High ceilings

Marble flooring

Semi-solid parquet flooring

Distances

Amenities



1 km

Airport



55 km

Sea



500 m

Public transport




500 m

Contact us



Office Properties

 (+357) 25871010

 info@vivorealty.com.cy

