

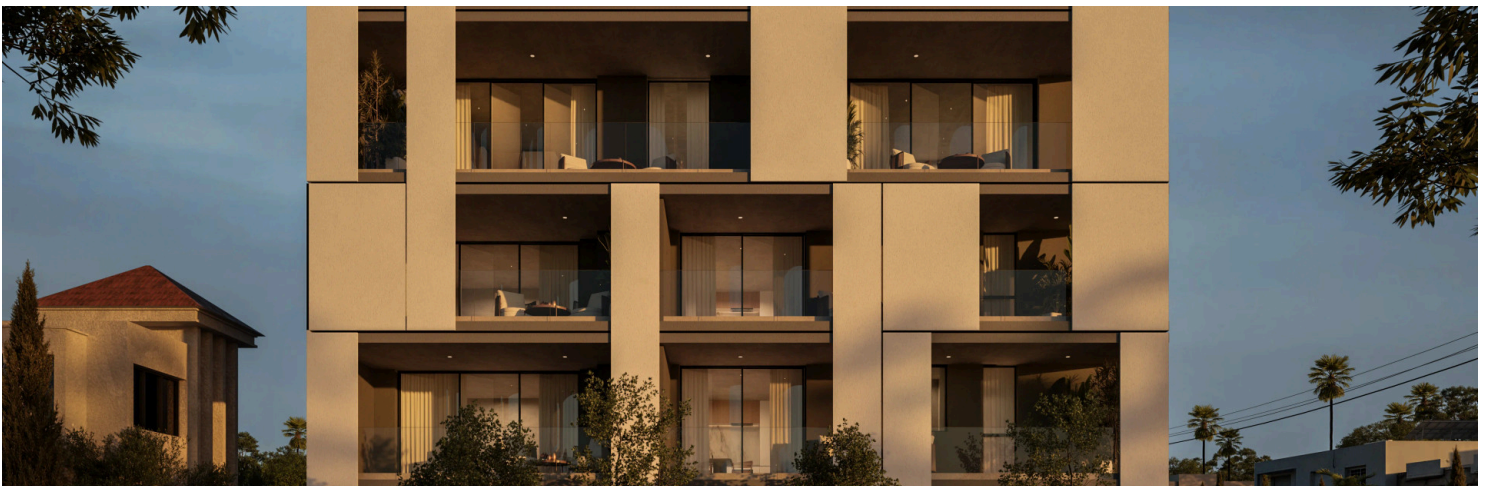
185259

TWO BEDROOM TOP FLOOR APARTMENT APARTMENT WITH ROOF GARDEN IN COLUMBIA AREA - LIMASSOL

 Columbia Area, Limassol

€575,000 +VAT





Overview

Specifications

Bedrooms



2

Bathrooms



2

Covered



85 m²

Type

Apartment

Covered veranda

18 m²

Roof garden

31 m²

Status

Off plan

Energy efficiency rating



Description

For sale off plan, this modern two-bedroom, two-bathroom apartment offers a comfortable living experience in the sought-after Columbia Area. Spanning 85 m² of internal space, the apartment sits on the top floor of a contemporary building with elevator access, providing privacy and peaceful views.

The thoughtfully designed layout includes an open-plan living and dining area, seamlessly connecting to a well-appointed kitchen. Both bedrooms are generously sized, including a master suite with its own bathroom. With Energy Efficiency A, you can enjoy a cost-effective and eco-friendly home.

Columbia Area is known for its vibrant yet peaceful atmosphere, making it a favorite among professionals and families alike. The neighborhood features well-maintained streets, parks, and convenient shopping options. Its prime location ensures you are just minutes from the highway, offering easy access to the city center and beyond, as well as close to supermarkets, cafes, and schools.

This is a unique opportunity to own a brand-new home in one of the area's best locations. For more information or to arrange a consultation, please contact Vivo Realty.



Additional information

Facilities

Aircondition, Provision

Elevator

Parking, Covered

Solar water heater

Features

Bright

Door screen

Double glazing

Easy access to highway

Easy access to main roads

Near amenities

Near bus route

Quiet area

Rental potential

Roof garden

Veranda

Distances

Amenities

 500 m

Airport

 55 km

Sea

 1.5 km

Public transport

 500 m


Schools

 1 km

Contact us



Office Properties

 (+357) 25871010

 info@vivorealty.com.cy

