

183407

TWO BEDROOM APARTMENT IN KAPSALOS - LIMASSOL

 Kapsalos, Limassol

€420,000 +VAT





Overview

Specifications

Bedrooms

 2

Bathrooms

 1

Covered

 81 m²

Type

Apartment

Covered veranda

39 m²

Uncovered veranda

5 m²

Status

Off plan

Furnished

Unfurnished

Energy efficiency rating

 **A**

Description

For sale: Modern off-plan apartment offering 81 square meters of comfortable internal space in the popular Kapsalos area. This well-designed property features two spacious bedrooms and one contemporary bathroom, creating a functional and inviting home for individuals, couples, or small families. Located on the second floor of a well-maintained three-story building, the apartment is easily accessible via an elevator.

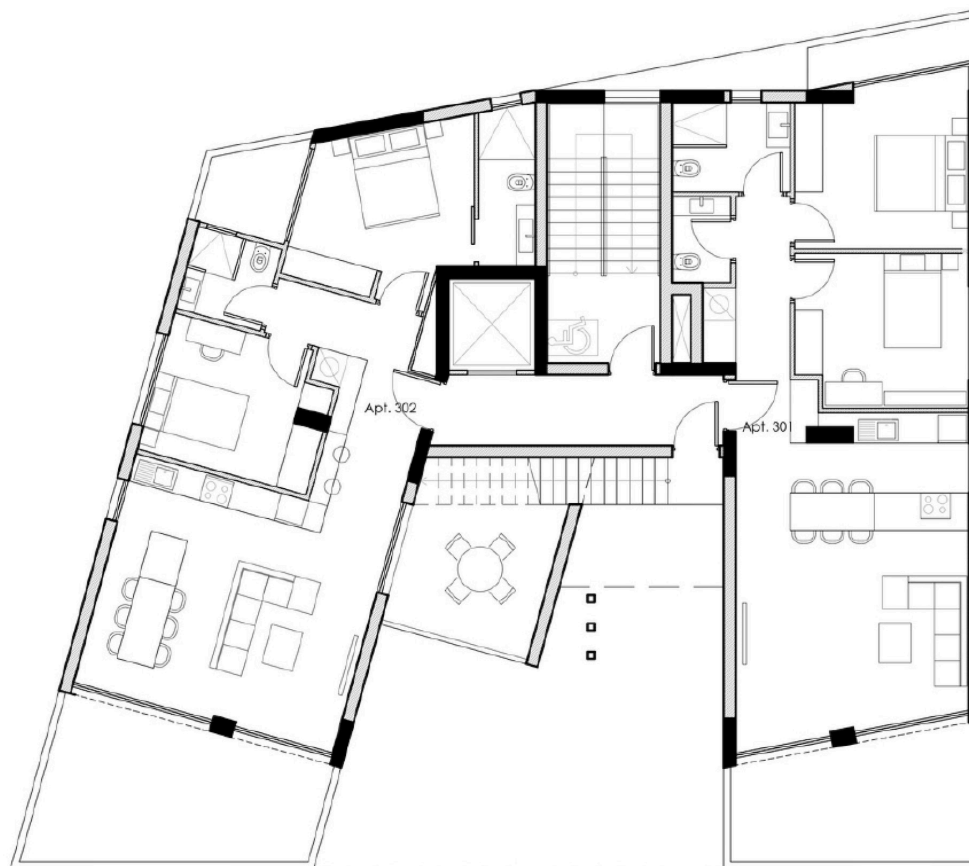
Kapsalos is a vibrant neighborhood known for its central location and excellent connectivity. Residents enjoy close proximity to the highway, making daily commutes easy and convenient. The area is surrounded by a variety of amenities, including supermarkets, schools, shops, and local services, ensuring all your needs are just moments away.

The apartment is delivered unfurnished, allowing you to add your personal touch and transform the space to suit your style. With an energy efficiency rating of A, you can expect lower utility costs and a more sustainable lifestyle. This is an excellent opportunity to invest in a thriving area with strong rental demand or to secure a modern home for your own use.

For more information or to arrange a viewing, contact Vivo Realty today.



Floor plans



Additional information

Facilities

Aircondition, Provision

Elevator

Heating, Provision

Parking, Covered

Solar water heater

Storage

Features

Alarm system

Bright

Double glazing

Easy access to highway

Easy access to main roads

Near amenities

Quiet area

Rental potential

Veranda

Distances

Amenities



500 m

Airport



60 km

Sea



4 km

Public transport




500 m

Contact us



Office Properties

 (+357) 25871010

 info@vivorealty.com.cy

